

Andrea Moneta

Output Number 3: Gandhi King Ikeda - Peacebuilders Exhibition
Nottingham Trent University and Broadway Cinema Gallery, May 2017

Portfolio part 1: Documentation of Work

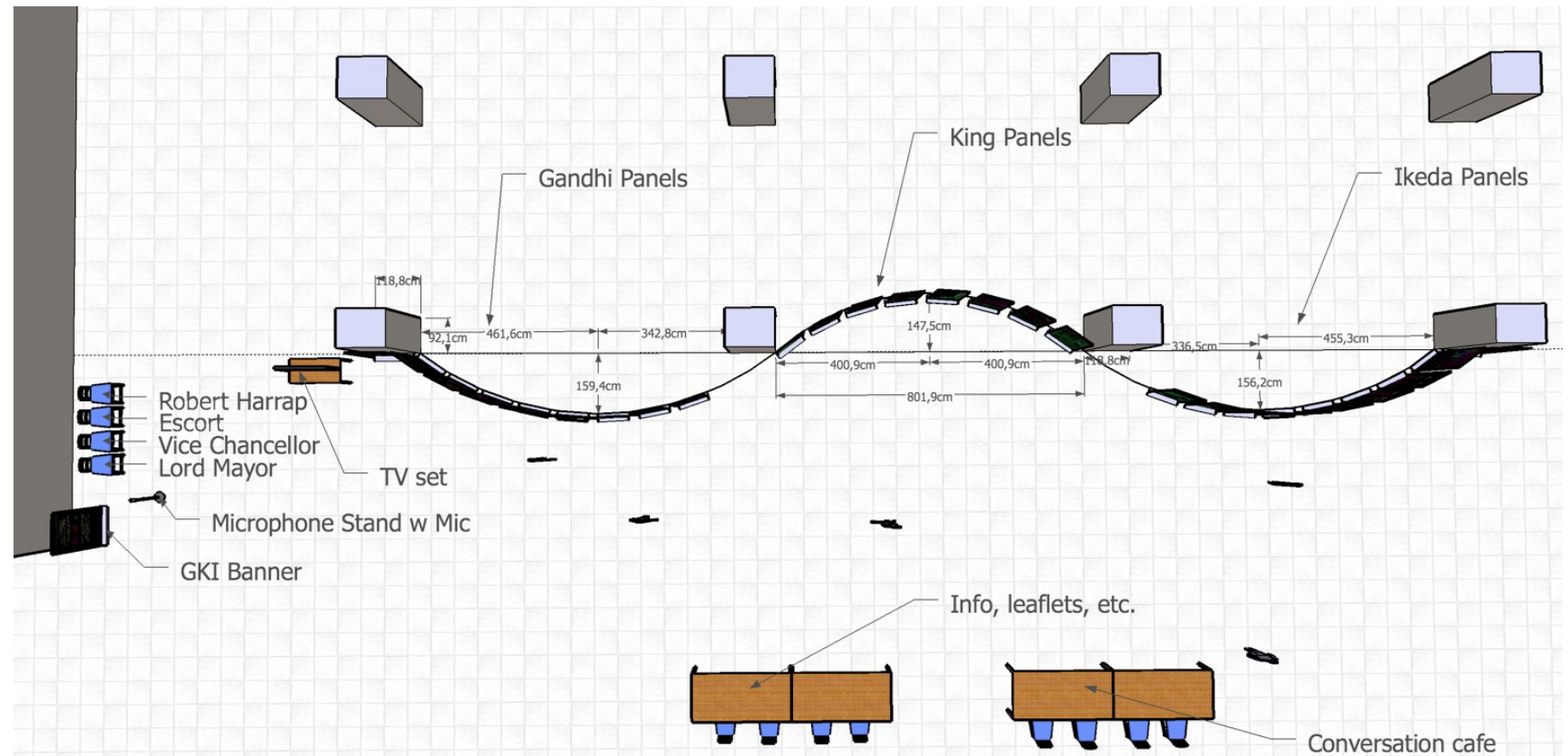
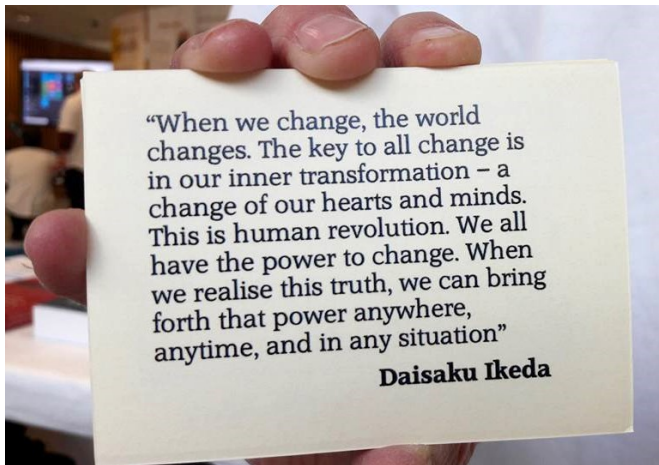
The output 3 illustrates the development of the design process and realisation of the GKI Peacebuilders exhibition in two different venues in Nottingham, following a humanistic approach based on true *Dialogues* with the visitors. Included, are also supplementary materials to demonstrate significance and originality of the research outputs.

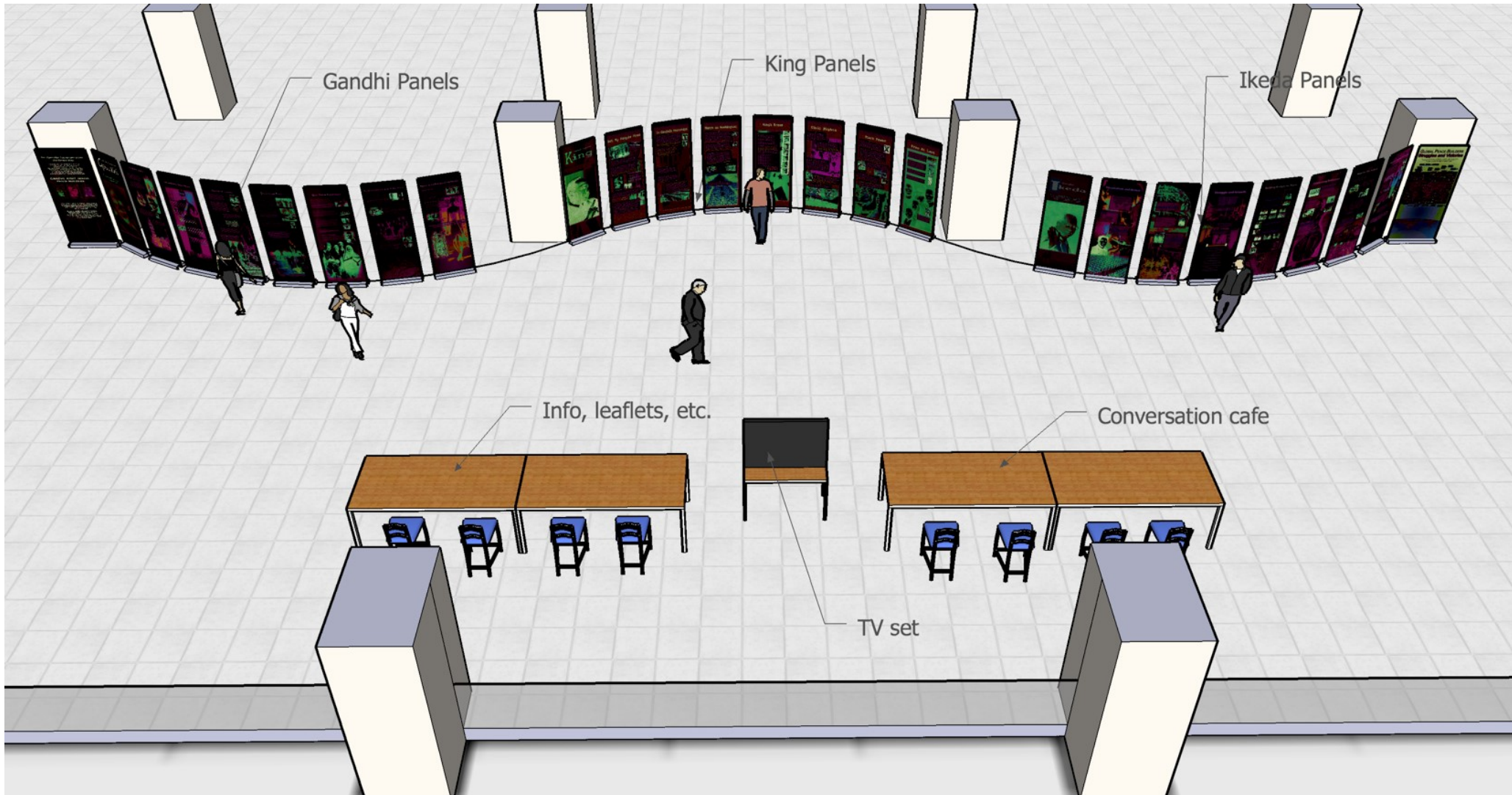


GKI Exhibition in Newton Building - Forum Level 1 Nottingham Trent University, 2-5 May 2017

The exhibition has been enabled and funded by SGI-UK;
 The organisation lasted 5 months and involved 54 SGI
 volunteers of four Nottingham Districts, two Leicester
 Districts, two Lincoln Districts and two Derby Districts;

Inspirational quote and Design of GKI Exhibition in Newton Building
 Forum Level 1, Nottingham Trent University, 2-5 May 2017





**Design of GKI Exhibition in Newton Building Forum Level 1
Nottingham Trent University, 2-5 May 2017**



Design and realisation of GKI Exhibition in Newton Building Forum Level 1 Nottingham Trent University, 2-5 May 2017



Realisation of GKI Exhibition in Newton Building Forum Level 1
Nottingham Trent University, 2-5 May 2017



Exhibition launch: NTU's VC Prof. Peck welcomes the Lord Mayor of Nottingham, Councillor Mohammed Saghir and SGI-UK Director, Robert Harrap





GKI Peacebuilders Exhibition: opening



Starters

(Chooses ONE of the following)

What is your favourite sound ?

What made you last smile ?

Shut your eyes and listen. What do you hear

Dish of the Day

When did you last shout ?

How do you listen to a deaf person ?

Are you afraid of silence ?

Do you enjoy listening to other people ?

Do you ever listen to yourself ?

How do you listen if you disagree ?

Has listening changed your life ?

What does it feel like to not be listened to ?

Thought for the Day
Pick a card

Dessert

What are your dreams for the future ?

What is the most beautiful thing you have ever heard ?

CHEF'S SPECIALITY OF THE HOUSE



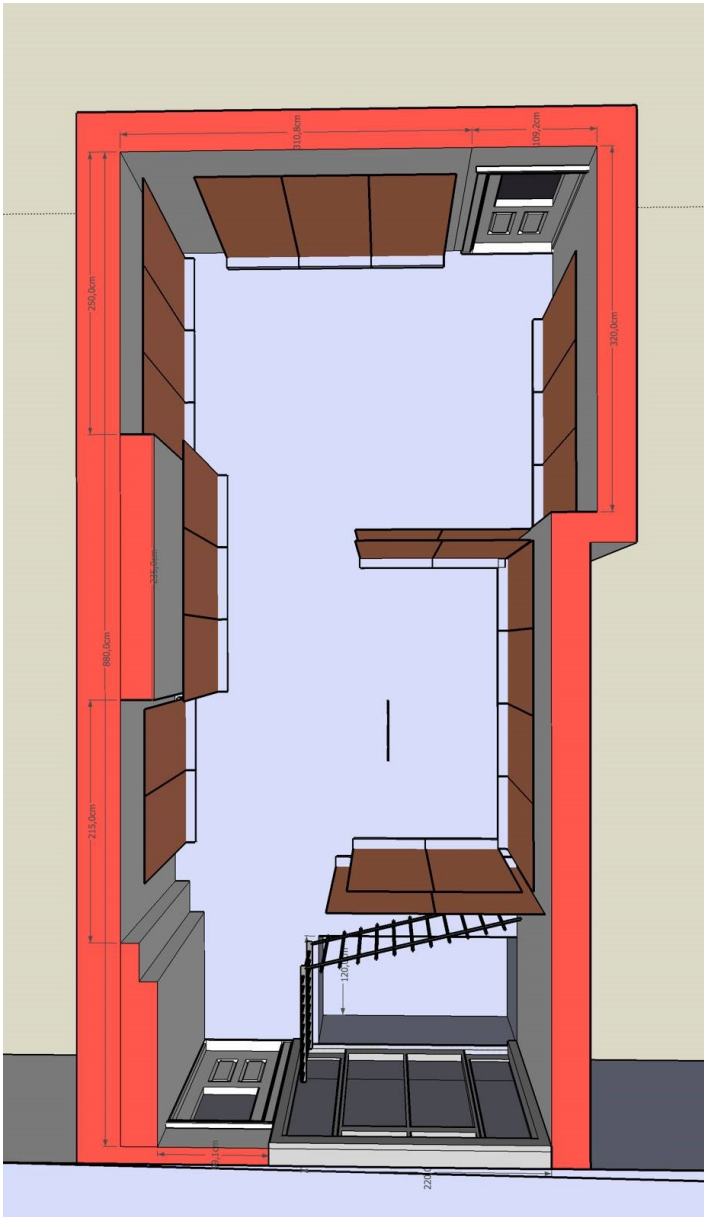
GKI Peacebuilders Exhibition: The Conversation Café' and Food for Thought Menu



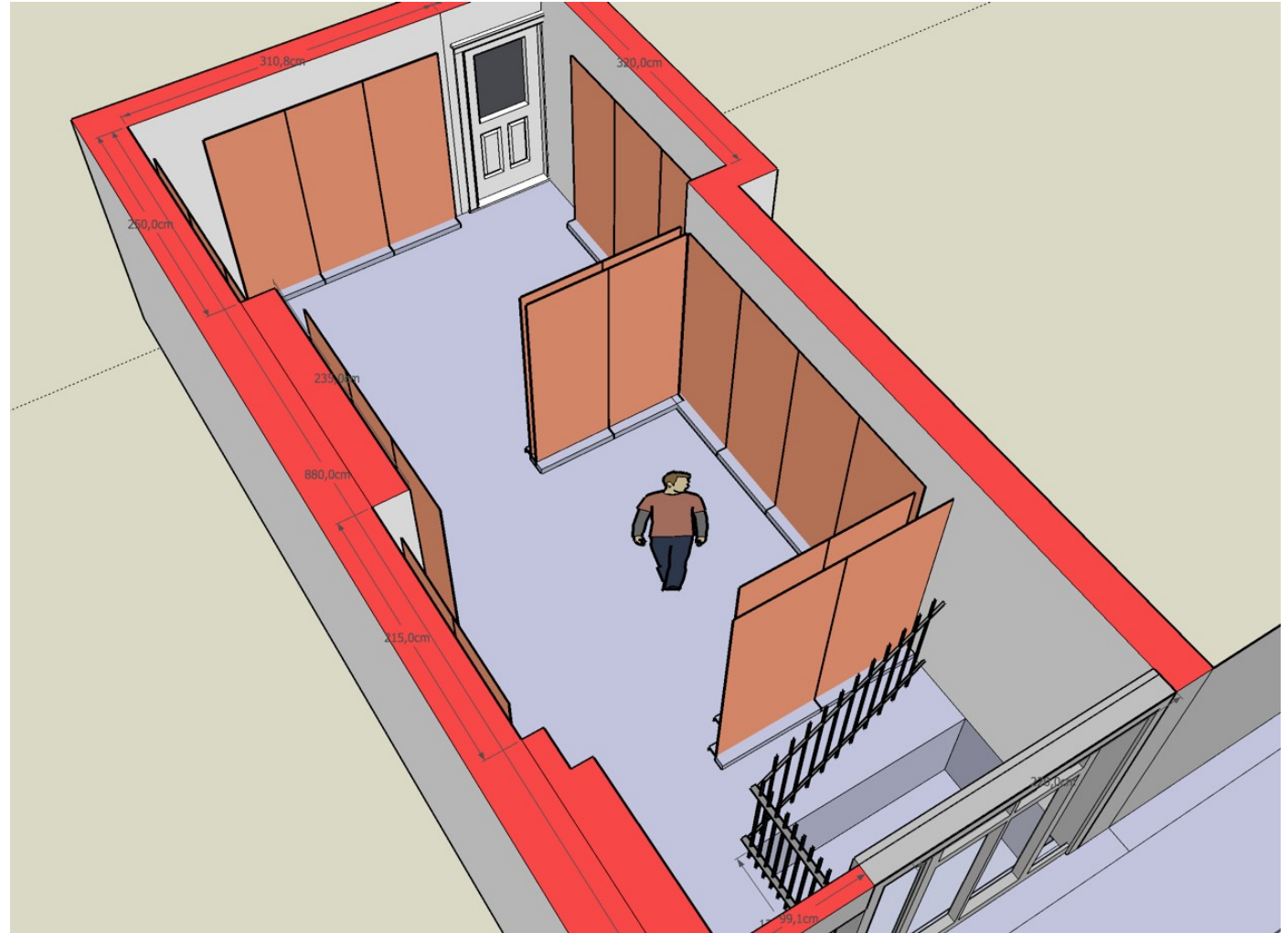
Nottingham Girls High School visiting
GKI Peacebuilders Exhibition



GKI Exhibition in Broadway Cinema Gallery, Nottingham; 6-12 May 2017



Andrea Moneta Output #3



Design of GKI Exhibition in Broadway Cinema Gallery



Realisation of GKI Exhibition in Broadway Cinema Gallery, 6-12 May 2017



GKI Exhibition in Broadway Cinema Gallery: Launch event and activities for children



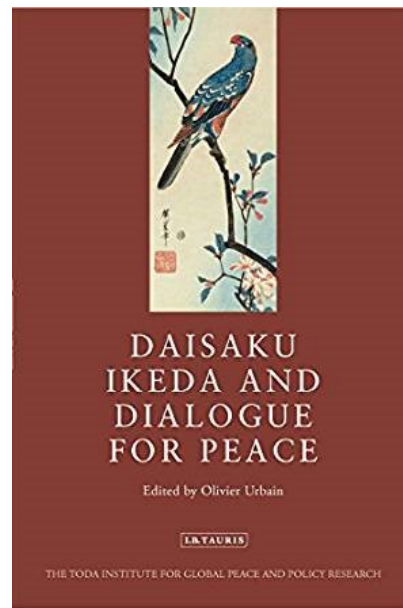
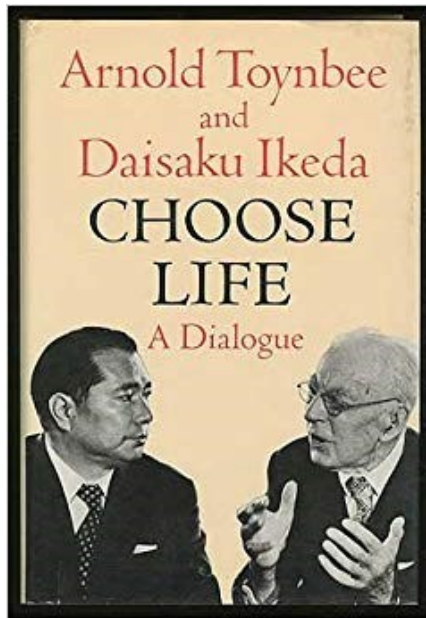
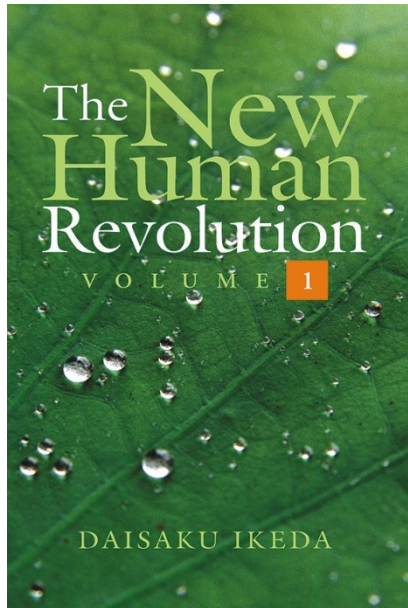
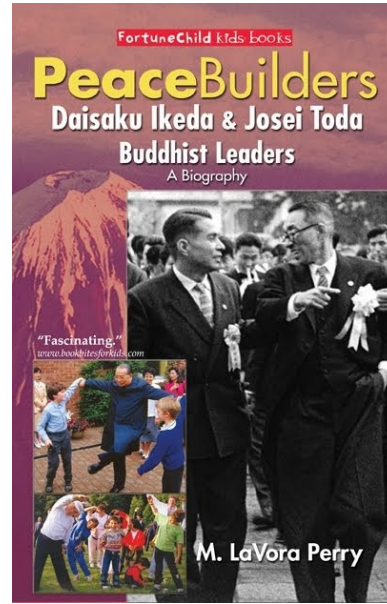
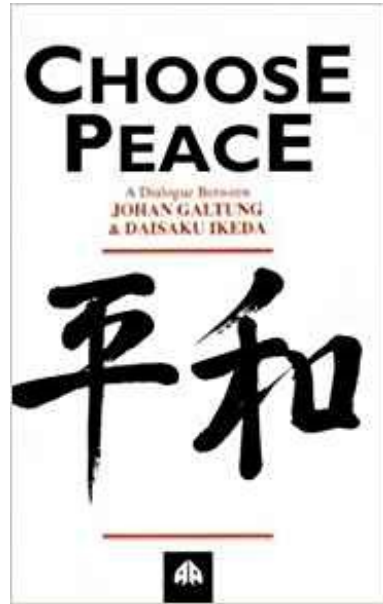
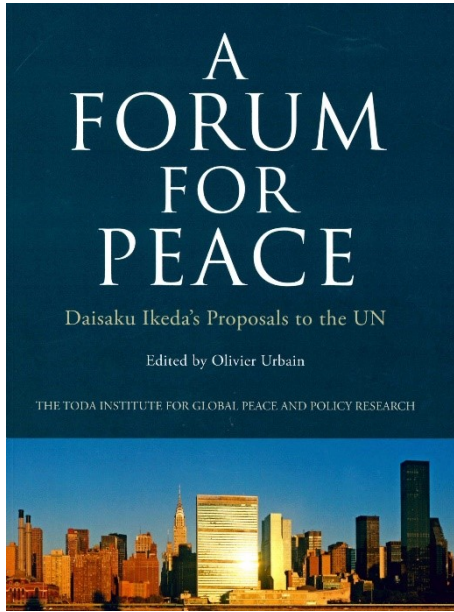


GKI Exhibition in Broadway Cinema Gallery: The Conversation Cafe'

Andrea Moneta

Output Number 3: Gandhi King Ikeda - Peacebuilders Exhibition

Portfolio part 2: Supplementary material



The GKI Exhibition and its related activities had been inspired by Daisaku Ikeda's longstanding commitment for peace; a Japanese Buddhist philosopher, educator, author, he had published more than 50 dialogues with scholars, peace activists and leading world figures; Since 1983, Ikeda has submitted annual peace proposals to the United Nations.

The GKI Exhibition realised an environment to embrace each single visitor and to foster Dialogues for Peace: *'Everything begins with dialogue. Dialogue is the initial step in the creation of value. Dialogue is the starting point and unifying force in all human relationships.'* (D. Ikeda)

Further Output: Graphic Design of pop-up banners and on-screen info had been designed by Moneta.

Exhibition's outcomes were aimed at enhancing the understanding and involvement through 1:1 dialogue of NTU students, High School students, staff and general public in the following key themes:

- HUMANITY AT THE HEART explores their common belief in the innate dignity of humanity.
- PRINCIPLES INTO ACTION illustrates how each man was able to translate his principles into dynamic action.
- NONVIOLENCE explores the principles of nonviolent action as a way of life and a means to bring about positive change in society.
- ADVERSITY AND RESISTANCE shows each man's ability not only to triumph over adversity, but to utilize it to further their growth as humanists.



Further Output: Graphic Design of pop-up banners and on-screen info

Gandhi King Ikeda

Peace-builders Exhibition

2nd - 5th May 2017
10.00 am - 5.00 pm
Newton Building, Forum Level 1
Nottingham Trent University



Further Output: Graphic Design of leaflet

GKI Exhibition checked numbers:

Visitors: **1856 people;**

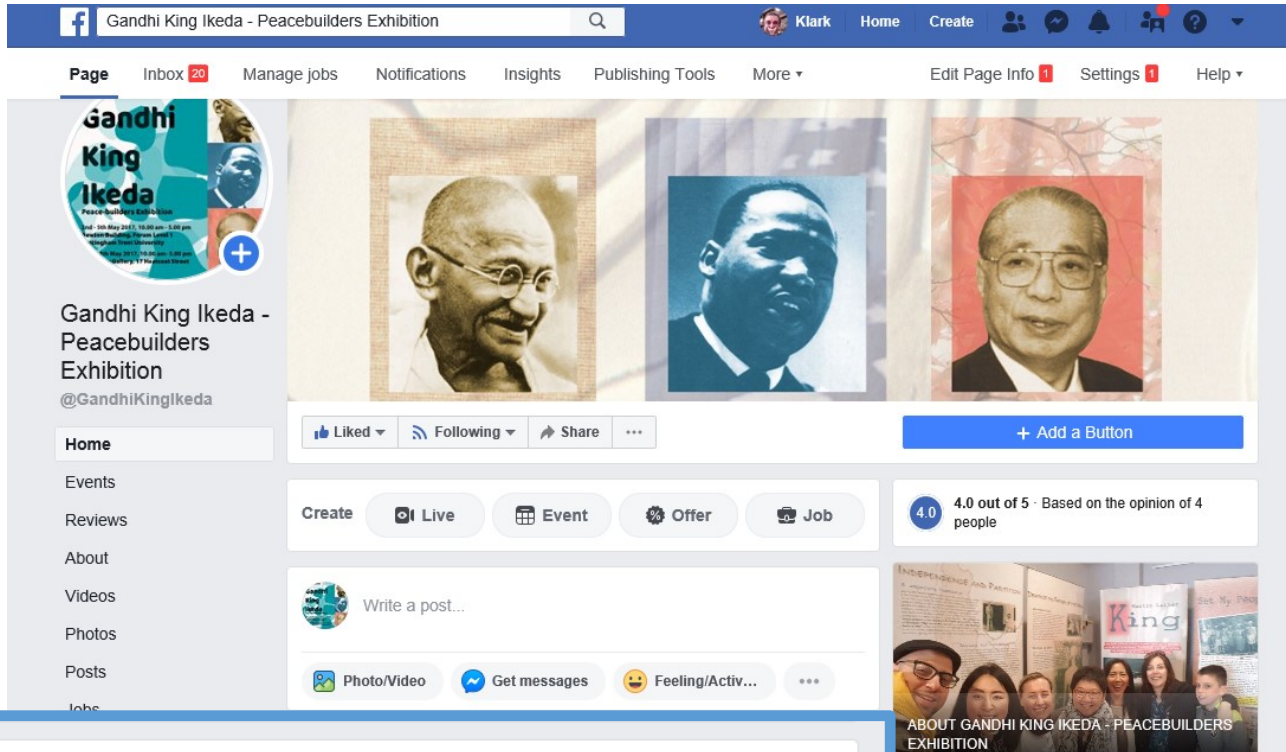
3 visiting School Party: total **132 students;**

Attending Conversation Cafe': **293 people;**

The GKI Exhibition was the core event of **Peacebuilders**, a programme of events and activities in and around Nottingham from 22nd April to 21st May 2017, supported by:

Arts Council England and Nottingham City Council Arts, City Arts, Journey to Justice - Midland3Cities, Broadway Media Centre, Interfaith, Meeting Ground Theatre Company, Malt Cross Café, NUASt and local schools.

Further Output: Graphic Design of leaflet Had been designed by Moneta.



Further Output: Facebook dedicated GKI Exhibition page

GKI Exhibition Web/social network

GKI Exhibition Facebook page:

<https://www.facebook.com/GandhiKingIkeda/>

NTU website: <https://www.ntu.ac.uk/about-us/events/events/2017/05/exhibition-gandhi-king-ikeda>

Peacebuilders Facebook page:

<https://www.facebook.com/PeacebuildersUK/>

Peacebuilders events

<https://www.visit-nottinghamshire.co.uk/whatson/nottingham-peacebuilders-2017-p713221>

Further Output: Facebook dedicated GKI Exhibition page built and managed by Moneta, received 2,300 clicks, 280 likes, 183 followers.

Gandhi, King, Ikeda – Peacebuilders Exhibition in the East Midlands

Kosen-rufu was in full bloom in East Midlands Headquarters throughout the month of May, writes Tanya Myers.

Members from Lincolnshire, Derbyshire, Leicestershire and Nottinghamshire opened The Gandhi, King, Ikeda Peacebuilders Exhibition and 'Conversation Café' at Nottingham Trent University on 3 May (Soka Gakkai Day). This was supported by goodwill speeches from

Lord Mayor of Nottingham Mohammed Saghir, NTU Vice-chancellor Edward Peck and SGI-UK General Director Robert Harrap. Interfaith and school parties partook of our the café's 'Listening Menu' with relish!

In week two, the GKI exhibition was moved to the heart of Nottingham's cultural quarter – Broadway Gallery. Here, supported by Peacebuilders cultural events across the city and

Refugee Forum, we ensured fellow citizens from the diverse communities of Nottingham met SGI-UK and President Ikeda. Through heart-to-heart dialogues these meetings will continue to resonate far and wide.

We are so grateful to everyone for creating such a passionate and heartwarming activity. The seeds of unity and hope are sown deep and will continue to bloom for the future.



GKI Exhibition press coverage

The GKI Exhibition was covered by internal NTU press, Nottingham City Council WhatsOn web page, Visit Nottinghamshire Web page, Notts TV and SGI-UK e-bulletin.