

A Comparison of Spin-Flip TDDFT-Based Conical Intersection Approaches with XMS-CASPT2

*Max Winslow, Warren B. Cross and David Robinson**

Department of Chemistry and Forensics, School of Science and Technology, Nottingham Trent University, Clifton Lane, Nottingham, NG11 8NS, United Kingdom

Abstract. Determining conical intersection geometries is of key importance to understanding the photochemical reactivity of molecules. While many small to medium-sized molecules can be treated accurately using multireference approaches, larger molecules require a less computationally demanding approach. In this work, minimum energy crossing point conical intersection geometries for a series of molecules has been studied using spin-flip TDDFT (SF-TDDFT), within the Tamm-Dancoff Approximation, both with and without explicit calculation of non-adiabatic coupling terms, and compared with both XMS-CASPT2 and CASSCF calculated geometries. The less-computationally demanding algorithms, which do not require explicit calculation of the non-adiabatic coupling terms, generally fare well with the XMS-CASPT2 reference structures, while the relative energetics are only reasonably replicated with the MECP structure calculated with the BHHLYP functional and full non-adiabatic coupling terms. We also demonstrate that, occasionally, CASSCF structures deviate quantitatively from the XMS-CASPT2 structures, showing the importance of including dynamical correlation.

1. Introduction

Photochemical processes are ubiquitous in nature and form the backbone of many important chemical processes. In nature, the photo-induced isomerization of retinal forms the basis of vision, while absorption of light by chlorophyll is important in photosynthesis. In terms of man-made processes, dye-sensitized solar cells,¹ fluorescent molecular probes (a full literature review is beyond the scope of the current work; see e.g. ref ²), chemosensors,³ energy transfer cassettes,⁴ photodynamic therapy agents⁵ and tunable laser dyes⁶⁻⁸ are just a handful of the many applications of photochemistry. Key to the correct computational description of absorption of radiation by such molecules is the transition dipole moment.⁹ Upon absorption, the molecule may relax to the ground electronic state via different routes: emission, phosphorescence and radiationless decay (via a conical intersection). The last of these relaxation methods provides an extreme test of the robustness of computational methods, since at the conical intersection there are (at least) two degenerate electronic states and the Born-Oppenheimer approximation breaks down (see e.g. references ¹⁰ and ¹¹).

Many studies have employed the CASSCF method to explore the excited state pathways (including conical intersections); there are far too many to include here. There are numerous examples also where TDDFT based methods have been applied to such problems. In general, TDDFT results have been compared to CASSCF (where possible), with mixed accuracy. Minezawa and Gordon¹² compared spin-flip (SF) TDDFT minimum energy crossing point (MECP) conical intersection geometries of ethene with those determined at the MRCI and MS-CASPT2 levels of theory, with SF-TDDFT correctly predicting the three conical intersection geometries determined by the multireference methods. Filatov¹³ studied the dependence of the choice of density functional upon MECP geometry compared with various multireference approaches (CASSCF, CASPT2, MRCI),

concluding that the BHLYP hybrid functional performed the best, while popular contemporary functionals, such as M06-2X, perform relatively poorly. Nikiforov et al.¹⁴ studied a group of small organic molecules, using the restricted ensemble-referenced Kohn-Sham (REKS) approach, comparing their results with MR-CISD calculated geometries. They determined average RMSD differences from the MR-CISD geometries of ~ 0.1 Å, although the underlying MCSCF wavefunctions for some of the molecules had reduced active spaces due to technical limitations. Zhang and Herbert¹⁵ compared SF-TDDFT calculated MECP conical intersection geometries of 9H-adenine to MR-CIS results,¹⁶ noting that the difference between the two methods was nearly indistinguishable. Recently, Segarra-Marti, Tran and Bearpark¹⁷ studied the excited state decay of uracil and thymine cations, while including dynamical correlation using extended multi-state CASPT2 (XMS-CASPT2).¹⁸ They found that inclusion of dynamical electron correlation resulted in the separation of the energy levels of a “3-state” conical intersection, giving a different geometry and energy.

While it is desirable to use the highest-level theory possible to determine MECP geometries, for systems of interest in both chemistry and biology, it’s not always possible to use multireference approaches. In the current study, we compare MECP conical intersection geometries calculated using SF-TDDFT, both with and without explicit calculation of non-adiabatic coupling terms, with both CASSCF and XMS-CASPT2. Our primary motivation is to determine the accuracy of SF-TDDFT S_1/S_0 MECPs against XMS-CASPT2 for a set of medium-sized molecules, with particular emphasis on methods that don’t require explicit computation of the non-adiabatic coupling terms. It is therefore useful to establish a protocol for the optimization of MECP geometries of larger molecules that treat electron correlation sufficiently. Boggio-Pasqua and Bearpark have recently investigated a similar approach to radical polycyclic aromatic hydrocarbons.¹⁹ The rest of the paper

is organized as follows: in section 2, we present an overview of the background theory of the approaches used; in section 3, we give the computational details; in section 4, we present the results of our comparisons, and in section 5 we give our conclusions.

2. Background Theory

We here present a brief overview of the background theory to the methods involved, in order to fully understand the key differences between each approach.

2.1 Branching planes

In the vicinity of a conical intersection, two (or more) electronic states become degenerate and the Born-Oppenheimer approximation breaks down. Consider the case where two electronic states, J and K , become degenerate; given N_{int} internal degrees of freedom, the $(N_{int} - 2)$ -dimensional space is known as the seam space, in which the two electronic states are degenerate, and the remaining two degrees of freedom are called the branching space. Within the branching space, the degeneracy of the Born-Oppenheimer surfaces is lifted by an infinitesimal shift in nuclear coordinates. The branching space is spanned by two vectors, \mathbf{g}_{JK} and \mathbf{h}_{JK} . The first is evaluated simply as the difference in gradient vectors of the two Born-Oppenheimer electronic states:

$$\mathbf{g}_{JK} = \frac{\partial E_J}{\partial \mathbf{R}} - \frac{\partial E_K}{\partial \mathbf{R}}$$

The second vector, \mathbf{h}_{JK} , is known as the non-adiabatic coupling vector and is defined as:

$$\mathbf{h}_{JK} = \left\langle \psi_J \left| \frac{\partial}{\partial \mathbf{R}} \right| \psi_K \right\rangle$$

The derivative coupling vector, \mathbf{d}_{JK} , can then be calculated as

$$\mathbf{d}_{JK} = \frac{\mathbf{h}_{JK}}{E_J - E_K}$$

The topology of the seam space is determined by the relative orientation and magnitude of the two vectors \mathbf{g}_{JK} and \mathbf{h}_{JK} .

2.2 Multireference approaches

Assuming an appropriately chosen active space, the CASSCF and/or XMS-CASPT2²⁰⁻²³ approach can be used to calculate both \mathbf{g}_{JK} and \mathbf{h}_{JK} analytically, using state-averaged wavefunctions (over the Born-Oppenheimer electronic states of interest). Further details of the multireference calculations are given below.

2.3 DFT / TDDFT approaches

2.3.1 Brillouin's theorem

If one considers the explicit form of the Hamiltonian for a calculation of a conical intersection

$$H = \begin{bmatrix} H_{JJ}(\mathbf{R}) & H_{JK}(\mathbf{R}) \\ H_{KJ}^*(\mathbf{R}) & H_{KK}(\mathbf{R}) \end{bmatrix}$$

then, for a CIS calculation, the off-diagonal term $H_{JK}(\mathbf{R})$ must be zero when an S₁/S₀ conical intersection is calculated, due to Brillouin's theorem (this is not strictly true for TDDFT, but is in general observed for functionals typically used with exact Hartree-Fock exchange). As a result, the coupling matrix elements of \mathbf{h}_{JK} vanish and the degeneracy is only over one degree of freedom, resulting in an incorrect topology of the conical intersection. No such condition arises for two

excited states becoming degenerate. One approach used to tackle this problem is SF-TDDFT,²⁴ in which the reference state (equivalent to the “ground-state”) has a different spin multiplicity to the target states, hence the “ground-state” is also treated as an excited state, thus both \mathbf{g}_{JK} and \mathbf{h}_{JK} determine the topology around the conical intersection.²⁵ SF-TDDFT approaches can be used to calculate analytic derivative couplings.²⁵

2.3.2 Penalty function optimization

Where analytic derivative couplings cannot be calculated, or where their calculation is expensive, more approximate methods can be used. The first considered here is the penalty-constrained optimization algorithm of Martínez and co-workers.²⁶ In this approach, minimization of the objective function

$$F_{\sigma}(\mathbf{R}) = \frac{1}{2} [E_J(\mathbf{R}) + E_K(\mathbf{R})] + \sigma \left(\frac{[E_J(\mathbf{R}) - E_K(\mathbf{R})]^2}{E_I(\mathbf{R}) - E_J(\mathbf{R}) + \alpha} \right)$$

is performed, where α is a parameter employed to avoid singularities and σ is a Lagrange multiplier. The minimization of the penalty function is performed in an iterative manner for increasing values of σ .

2.3.3 Branching plane update

The second approximate approach considered in this study is the branching-plane update algorithm of Morokuma and co-workers.²⁷ The mean energy gradient, \mathbf{G}_{mean} , is defined as

$$\mathbf{G}_{\text{mean}} = \frac{1}{2}(\mathbf{G}_J + \mathbf{G}_K)$$

and the normalized difference gradient is given as

$$\mathbf{G}_{\text{diff}} = \frac{\mathbf{G}_K - \mathbf{G}_J}{|\mathbf{G}_K - \mathbf{G}_J|}$$

A projection vector, \mathbf{P} , can then be defined as

$$\mathbf{P} = \mathbf{1} - \mathbf{G}_{\text{diff}}\mathbf{G}_{\text{diff}}^T - \mathbf{G}_{\text{orth}}\mathbf{G}_{\text{orth}}^T$$

where \mathbf{G}_{orth} is a vector orthogonal to \mathbf{G}_{diff} and is an approximation to the derivative coupling vector. Finally, the gradient of the objective function is defined as

$$\mathbf{G} = \mathbf{P}\mathbf{G}_{\text{mean}} + 2(E_K - E_J)\mathbf{G}_{\text{diff}}$$

3. Computational Details

XMS-CASPT2 calculations were performed for the molecules given in Table 1 (including active spaces). These molecules were chosen as representative of molecular structures found in molecular probes of biological function, including a model of long unsaturated lipid tails (2,4,6-octatriene). The basis sets were chosen to match those used in the references provided (Table 1). The S_0 , S_1 and S_1/S_0 MECP geometries were optimized, using an average over the first two singlet excited states (in C_1 symmetry). The S_1 excited state geometry was used as an initial guess for the conical intersection geometry. In the absence of convergence, a small “kink” was added to the molecular structure to aid convergence by avoiding any limiting symmetry constraint (in the case of a ring structure, the ring was puckered by moving one atom 0.1 Å out of the plane of the ring). In all cases, the MECP geometries to be found were those that match the literature references given in

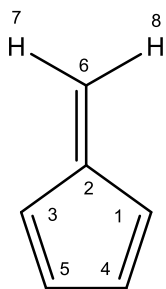
Table 1. A real shift of 0.2 au was used in all XMS-CASPT2 computations. Density fitting was used in all XMS-CASPT2 calculations, employing the TZVPP-JKFIT density fitting basis set, except for fulvene, where the cc-pVDZ-JKFIT set was employed. MECP geometries were determined using the same gradient projection algorithm as for SF-TDDFT.²⁸ All XMS-CASPT2 geometry optimisations were performed using the BAGEL software.^{29,30} CASSCF conical intersection geometry calculations were performed with the Molpro 2015.1 software^{28,31} without the use of density fitting. In all cases, we're comparing SF-TDDFT approaches to XMS-CASPT2 for well-known MECs, not trying to identify novel MECs.

Molecule	Active space	Basis set(s)
Fulvene ³²	(6,6)	cc-pVDZ
4ABN ³³	(10,9)	6-31+G(d)
5FC ³⁴	(8,7)	6-31G(d)
9H-adenine ³⁵	(12,10)	6-31G(d,p)
2,4,6-octatriene ³⁶	(6,6)	6-31+G(d)
Azomethane ³⁷	(6,4)	6-31G(d)
Azoxymethane ³⁷	(6,4)	6-31G(d)
Phenol ³⁸	(8,7)	6-31G(d,p)
SMAC ³⁹	(8,8)	6-31G(d,p)

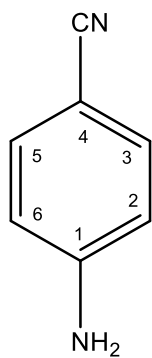
Table 1. Molecules considered in this work.

SF-TDDFT calculations were performed using the BHLYP^{40,41} and ω B97X⁴² functionals and the basis sets given in Table 1. The BHLYP functional has 50% Hartree-Fock exchange; such functionals are noted as successful within the spin-flip methodology.^{24,43} The ω B97X functional

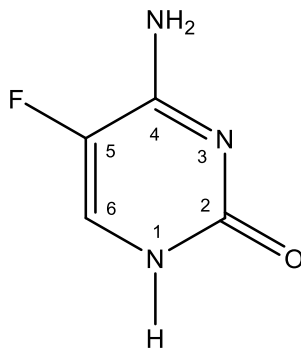
was chosen as an example of a contemporary range-separated hybrid functional that performs well for a variety of applications.⁴⁴ MECP geometries were determined by analytical calculation of the non-adiabatic coupling matrix elements as discussed in section 2.3.1,²⁵ using the gradient projection algorithm of Bearpark, Robb and Schlegel²⁸. We denote this as NAC for brevity. The penalty-constrained optimization approach (discussed in section 2.3.2; here defined as PC)²⁶ and branching-plane (discussed in section 2.3.3; here denoted as BP)²⁷ algorithms were used to determine MECP conical intersection geometries using SF-TDDFT without the explicit calculation of the non-adiabatic coupling terms. The spin-flip approach was used to determine the “reference” TDDFT state, as discussed in section 2. Each of the approaches considered here were performed within the Tamm-Dancoff Approximation,⁴⁵ due to restrictions in the implementation of the SF-TDDFT methodology. For the 5FC and azomethane molecules, convergence to the MECP structures using each of the SF-TDDFT approaches was poor. In these cases, increasing the basis set to 6-31G(d,p) and optimizing to the MECP geometry using NAC-BHLYP gave a good starting geometry for each of the SF-TDDFT approaches with the 6-31G(d) basis set. The DFT and SF-TDDFT calculations were performed with the Q-Chem 5.0 software suite.⁴⁶



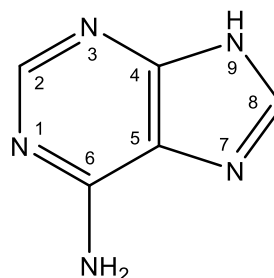
Fulvene



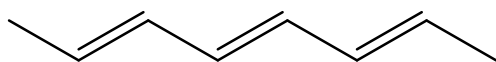
4ABN



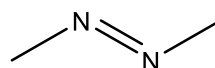
5FC



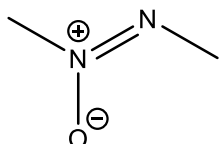
9H-adenine



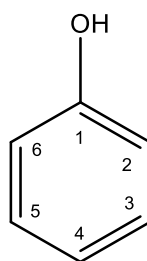
2,4,6-octatriene



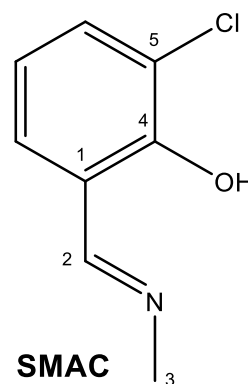
Azomethane



Azoxymethane



Phenol



SMAC

Figure 1. Schematic representation and numbering system used for the molecules considered in this work.

4. Results and Discussion

In this section, we briefly compare each molecule individually with the calculated XMS-CASPT2 MECP geometries, before giving a more general discussion of the performance of the SF-TDDFT-based methods.

Fulvene

Fulvene has been widely studied as a benchmark for calculations of the MECP conical intersection between the S_0 and S_1 electronic states.³² Given in Table 2 are selected geometrical parameters for the stable MECP.³² Qualitatively, each structure calculated using CASSCF and SF-TDDFT methods matches the XMS-CASPT2 reference structure well. The calculated bond lengths of the CASSCF structure are within 0.01 Å of the XMS-CASPT2 structure, while the largest deviation for the SF-TDDFT methods is 0.04 Å. The relative energetics are given in Table S2 (Supporting Information). Each of the methods using BHHLYP are very similar, with a deviation from the XMS-CASPT2 energies of ~0.5 eV for the gap between the S_0 minimum and MECP energies.

Parameter	BHHLYP			ω B97X			CASSCF ^a	XMS-CASPT2
	NAC	PC	BP	NAC	PC	BP		
C1 – C2	1.396	1.395	1.395	1.388	1.389	1.415	1.410	1.417
C1 – C4	1.473	1.473	1.475	1.485	1.483	1.480	1.461	1.471
C3 – C5	1.474	1.473	1.473	1.484	1.483	1.484	1.460	1.471
C4 – C5	1.340	1.340	1.339	1.344	1.345	1.358	1.371	1.377
C2 – C6	1.464	1.464	1.464	1.476	1.475	1.458	1.481	1.477
H7-C-C-C3	-76.9	-75.5	-76.1	-68.0	-67.8	-76.8	-58.7	-67.5
H7-C-C-H8	179.1	180.0	179.2	180.0	179.8	173.4	171.3	180.0

Table 2. Selected geometrical parameters for the S_1/S_0 MECP of fulvene with the cc-pVDZ basis set. Atom numbering taken from Figure 1. ^aTaken from reference ³². (NAC – full non-adiabatic coupling terms calculate; PC – penalty constrained algorithm; BP – branching plane update method. See section 2 of the main text for full details).

4ABN

Groups studying the photochemistry of 4ABN (and related amino-substituted benzonitriles) are primarily interested in the S_2/S_1 conical intersection, as this plays a pivotal role in the presence or absence of dual fluorescence bands in polar / non-polar solvents.³³ Shown in Figure 2 is the XMS-CASPT2 S_1/S_0 conical intersection geometry for 4ABN, with selected geometrical parameters given in Table 3. The XMS-CASPT2 and CASSCF geometries both exhibit a “boat-like” conformation, with the $C\equiv N$ and $-NH_2$ groups both pointing away from the plane of the ring, while each of the SF-TDDFT methods has the $-NH_2$ group nearly planar with the ring. In particular, the $-NH_2$ group is completely planar for BP- ω B97X. The relative energetics are given in Table S3. Each of the SF-TDDFT approaches, except PC-BHHLYP, have a deviation from the XMS-CASPT2 relative energies of ~ 0.8 eV (for the MECP).

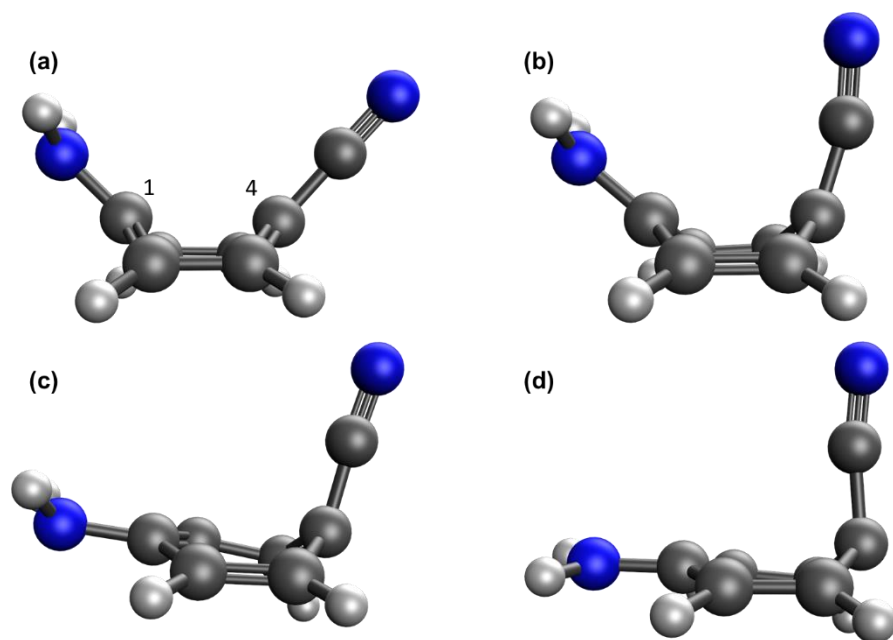


Figure 2. Calculated geometries for the S₁/S₀ MECP of 4ABN. (a) XMS-CASPT2, (b) CASSCF, (c) NAC- ω B97X, (d) BP- ω B97X. Carbon atoms are grey; nitrogen atoms blue. Selected atom numbers are given in (a).

Parameter	BHLYP			ω B97X			CASSCF	XMS-CASPT2
	NAC	PC	BP	NAC	PC	BP		
C1 – N (amine)	1.394	1.400	1.367	1.379	1.400	1.333	1.345	1.362
C4 – C	1.421	1.422	1.421	1.406	1.422	1.436	1.421	1.398
C – N (cyano)	1.143	1.143	1.142	1.161	1.143	1.165	1.152	1.191
C2 – C3	1.430	1.439	1.442	1.462	1.439	1.366	1.347	1.357
C5 – C6	1.348	1.348	1.344	1.340	1.348	1.345	1.347	1.346
C2-C3-C4	108.4	108.5	108.6	107.2	108.5	114.7	112.5	110.2
C3-C4-C5	116.0	115.9	115.7	114.1	115.9	110.3	118.9	117.8

C4-C5-C6	110.1	110.1	110.5	112.5	110.1	114.5	112.5	110.1
H-C3-C4-C	80.5	68.5	75.0	61.9	68.5	104.6	34.3	59.2
H-N-C1-C2 (cis)	-21.3	-22.0	-22.1	-17.8	-22.0	-11.6	-20.7	-21.9

Table 3. Selected geometrical parameters for the S_1/S_0 MECP of 4ABN with the 6-31+G(d) basis set. Atom numbering taken from Figure 1.

5FC

Blancafort et al. studied the photophysics of both cytosine and 5-fluorocytosine, characterizing both the S_1/S_0 and S_2/S_1 conical intersections to determine the non-radiative decay pathway.³⁴ Shown in Figure 3 is the XMS-CASPT2 S_1/S_0 MECP geometry, along with geometrical parameters (Table 4). The CASSCF geometry shows reasonable agreement with the XMS-CASPT2 geometry, although the C – H and N – H bonds remain planar with the ring, unlike the XMS-CASPT2 geometry. The SF-TDDFT methods have qualitative deficiencies in comparison to XMS-CASPT2; the non-planar nature of the ring and functional groups is quite different to that observed for XMS-CASPT2 (see Figure 3). In particular, the C-O bond is too long for each of the SF-TDDFT approaches. Qualitatively, the NAC approach most closely resembles the XMS-CASPT2 geometry; both the penalty constrained and branching plane update algorithms deviate further from the XMS-CASPT2 geometry. The relative energetics are given in Table S4. Where the MECP geometries are qualitatively correct, the relative energetics are within 0.4 eV of the XMS-CASPT2 energies.

Parameter	BHLYP			ω B97X			CASSCF	XMS-CASPT2
	NAC	PC	BP	NAC	PC	BP		
C4 – N	1.383	1.383	1.383	1.396	1.357	1.372	1.389	1.389
C2 – O	1.471	1.471	1.471	1.484	1.471	1.494	1.414	1.411
N1 – H	1.001	1.001	1.001	1.009	1.018	1.003	0.997	1.016
C5 – F	1.353	1.353	1.353	1.368	1.379	1.348	1.343	1.373
H-N-H	112.0	112.0	112.0	110.8	118.4	114.6	111.8	111.6
H-N-C4-C5	-17.1	-17.1	-17.1	-7.6	-8.7	-18.4	-21.2	-18.2
H-N1-C6-H	45.6	45.6	45.6	53.2	97.8	3.8	55.0	48.7

Table 4. Selected geometrical parameters for the S_1/S_0 MECP of 5FC with the 6-31G(d) basis set.

Atom numbering taken from Figure 1.

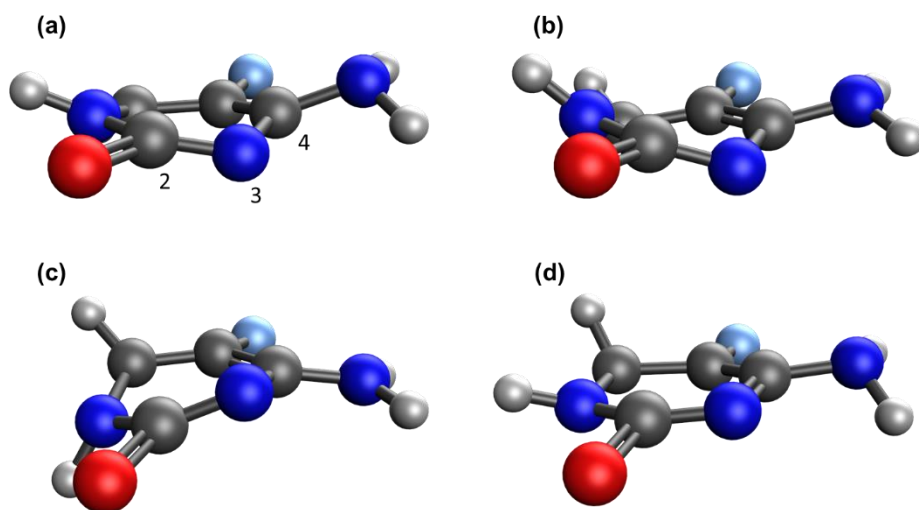


Figure 3. Calculated geometries for the S_1/S_0 MECP of 5FC. (a) XMS-CASPT2, (b) BP- ω B97X, (c) PC- ω B97X, (d) NAC- ω B97X. Carbon atoms are grey; nitrogen atoms blue; oxygen atoms red and fluorine is light blue. Selected atom numbers are given in (a).

9H-adenine

Perun et al. discovered conical intersections for the radiationless decay mechanisms of the lowest energy $^1n\pi^*$ and $^1\pi\pi^*$ (1L_b) electronically excited states of 9H-adenine, using CASSCF.³⁵ Single-point CASPT2 energies calculated at the S_0 equilibrium geometry predicted the $^1\pi\pi^*$ (1L_b) as the lowest singlet excited state and the $^1n\pi^*$ as the S_3 state, separated by the $^1\pi\pi^*$ (1L_a) state, in contrast to TDDFT and CIPSI results.⁴⁷ Given in Tables 5 and 6 are the calculated conical intersection geometrical parameters, for the conical intersections between $^1\pi\pi^*$ (1L_b) state and the ground state, and the $^1n\pi^*$ state and the ground state, respectively. The corresponding XMS-CASPT2 conical intersection geometries are shown in Figures S3(a) and S3(b), respectively. The SF-TDDFT approaches are qualitatively similar to the XMS-CASPT2 geometry, with the exception of the orientation of the C-H bond vector shown in Figure 4. There are some more significant quantitative differences (Tables 4 and 5); in particular, both CASSCF (for the $^1\pi\pi^*$ state) and PC- ω B97X (for the $^1n\pi^*$ state) exhibit large differences in the bond lengths compared to XMS-CASPT2.

Parameter	BHHLYP			ω B97X			CASSCF ^a	XMS-CASPT2
	NAC	PC	BP	NAC	PC	BP		
N3 – C2	1.277	1.368	1.390	1.396	1.363	1.393	1.285	1.396

C2 – N1	1.404	1.504	1.288	1.295	1.322	1.298	1.402	1.319
C6-N1-C2-N3	68.1	53.6	64.9	66.0	67.2	65.3	66.0	31.1
C6-N1-C2-H	-139.9	-157.0	-165.4	-166.2	-165.8	-167.0	-142.3	-164.7

Table 5. Selected geometrical parameters for the conical intersection between the $^1\pi\pi^*$ state and ground state of 9H-adenine with the 6-31G(d,p) basis set. Atom numbering taken from Figure 1.

^aTaken from reference ³⁵.

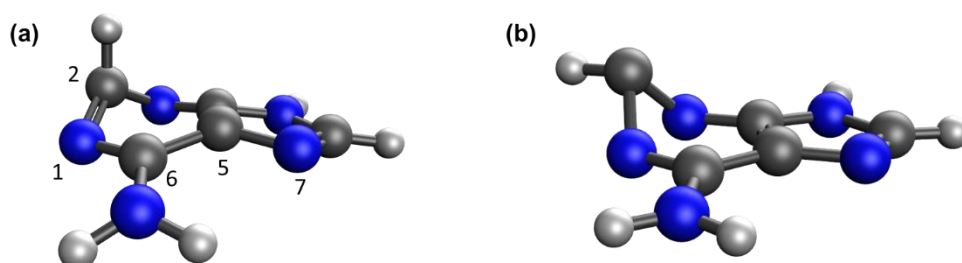


Figure 4. Calculated geometries for the MECP between the $n\pi^*$ state and the ground state of 9H-adenine; (a) XMS-CASPT2, (b) BP-BHHLYP. Carbon atoms are grey; nitrogen atoms blue.

Selected atom numbers are given in (a).

Parameter	BHHLYP			ω B97X			CASSCF ^a	XMS-CASPT2
	NAC	PC	BP	NAC	PC	BP		
N3 – C2	1.446	1.470	1.470	1.489	1.517	1.449	1.407	1.435
C2 – N1	1.426	1.444	1.444	1.417	1.400	1.439	1.390	1.413
C6-N1-C2-N3	74.3	83.9	83.8	74.4	70.8	63.7	67.6	64.4
C6-N1-C2-H	-171.2	-171.2	-171.2	-176.2	179.5	176.1	-84.1	-77.4

Table 6. Selected geometrical parameters for the MECP between the $^1n\pi^*$ state and ground state of 9H-adenine using the 6-31G(d,p) basis set. Atom numbering taken from Figure 1. ^aTaken from reference ³⁵

2,4,6-octatriene

Chattopadhyay et al. characterized the S_1/S_0 conical intersection on the photoisomerization pathway of 2,4,6-octatriene at the CASSCF/6-31G(d) level, along with S_0 and S_1 equilibrium geometries.³⁶ Shown in Figure 5 is the XMS-CASPT2 geometry, along with selected geometrical parameters in Table 7. Most of the methods qualitatively match the XMS-CASPT2 geometry, with reasonable quantitative accuracy. The exception is PC- ω B97X, which has a qualitatively different geometry (Figure 5). Despite numerous efforts, including starting from the XMS-CASPT2 geometry and selecting different electronic states in the spin-flip procedure for the MECP optimization, the geometry shown in Figure 5 was consistently obtained for this method. This suggests that the penalty constrained algorithm with the ω B97X functional is a poor approach to find such MECPs; indeed, when the full non-adiabatic coupling terms are included, with either ω B97X or BHLYP, then good qualitative and quantitative agreement with XMS-CASPT2 is observed.

Parameter	BHLYP			ω B97X			CASSCF	XMS-CASPT2
	NAC	PC	BP	NAC	PC	BP		
C1 - C2	1.494	1.494	1.494	1.494	1.560	1.494	1.504	1.499
C2 - C3	1.444	1.441	1.444	1.441	1.419	1.441	1.464	1.453
C3 - C4	1.404	1.399	1.406	1.399	1.445	1.399	1.427	1.408
C4 - C5	1.445	1.448	1.446	1.448	1.351	1.448	1.466	1.464
C5 - C6	1.407	1.417	1.407	1.417	1.452	1.417	1.427	1.419
C6 - C7	1.359	1.364	1.357	1.364	1.340	1.364	1.365	1.378
C7 - C8	1.489	1.496	1.485	1.496	1.494	1.496	1.501	1.497
C1 - C2 - C3	119.4	119.0	119.0	119.0	108.5	119.0	119.5	119.0
C1-C2-C3-C4	-100.8	-98.2	-102.0	-98.2	-57.0	-98.2	-103.9	-107.7
C2-C3-C4-C5	-127.4	-130.2	-126.9	-130.2	-177.3	-130.2	-118.2	-125.3
C3-C4-C5-C6	111.8	107.7	112.4	107.7	177.7	107.7	102.3	102.7

Table 7. Selected geometrical parameters for the S_1/S_0 MECP of 2,4,6-octatriene, with the 6-31+G(d) basis set. Atom numbering taken from Figure 1.

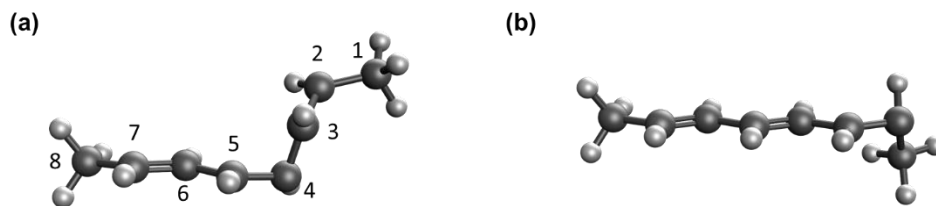


Figure 5. Calculated geometries for the S_1/S_0 conical intersection of 2,4,6-octatriene. (a) XMS-CASPT2, (b) PC- ω B97X.

Azomethane and azoxymethane

Ghosh et al. studied the photoisomerization pathways of azomethane and azoxymethane, determining the S_1/S_0 conical intersection geometries for each, respectively.³⁷ Shown in Figure S5 is the XMS-CASPT2 S_1/S_0 conical intersection geometry for azomethane, along with selected geometrical parameters in Table 8. Each of the SF-TDDFT-based methods qualitatively matches the XMS-CASPT2 geometry, with good quantitative agreement, including the relative energetics (Table S7).

Parameter	BHLYP			ω B97X			CASSCF ^a	XMS-CASPT2
	NAC	PC	BP	NAC	PC	BP		
C1 – N1	1.458	1.458	1.458	1.458	1.458	1.458	1.433	1.438
N1 – N2	1.254	1.254	1.254	1.254	1.254	1.254	1.287	1.271
N2 – C2	1.458	1.458	1.458	1.458	1.458	1.458	1.462	1.488
C1-N1-N2	120.2	120.2	120.2	120.2	120.2	120.2	130.9	114.4
N1-N2-C2	120.4	120.4	120.4	120.4	120.4	120.4	114.8	136.5
C1-N1-N2-C2	87.7	87.7	87.7	87.7	87.7	87.7	94.2	93.5

Table 8. Selected geometrical parameters for the S_1/S_0 MECP of azomethane, using the 6-31G(d) basis set. Atom numbering taken from Figure 1. ^aTaken from reference ³⁷

Given in Table 9 are selected geometrical parameters for azoxymethane (the XMS-CASPT2 S_1/S_0 conical intersection is shown in Figure S6). As for azomethane, the SF-TDDFT-based methods

show generally qualitatively correct conical intersection geometries, apart from the N1-O1 bond. The C-N-N-C backbone exhibits more of a kink in comparison to the XMS-CASPT2 geometry, which has a dihedral angle close to 172° , while the poorest performing SF-TDDFT methods show an angle of $\sim 155^\circ$ (BP-BHLYP and BP- ω B97X).

Parameter	BHLYP			ω B97X			CASSCF ^a	XMS-CASPT2
	NAC	PC	BP	NAC	PC	BP		
C1 – N1	1.453	1.459	1.459	1.459	1.465	1.459	1.452	1.466
N1 – N2	1.378	1.404	1.404	1.404	1.447	1.404	1.335	1.367
N1 – O1	1.401	1.328	1.328	1.328	1.483	1.328	1.419	1.395
N2 – C2	1.389	1.430	1.430	1.430	1.436	1.430	1.456	1.460
C1-N1-N2	109.1	112.0	112.0	112.0	106.1	112.0	114.2	112.3
N1-N2-C2	109.2	109.6	109.6	109.6	106.1	109.6	114.4	111.1
C1-N1-O1	107.4	112.6	112.6	112.6	95.4	112.6	112.6	110.3
C1-N1-N2-C2	172.5	155.1	155.1	155.1	163.3	155.1	178.6	172.1
C1-N1-O1-N2	116.3	117.4	117.4	117.4	108.9	117.4	118.7	115.6

Table 9. Selected geometrical parameters for the S_1/S_0 MECP of azoxymethane, using the 6-31G(d) basis set. Atom numbering taken from Figure 1. ^aTaken from reference ³⁷

Phenol

The photodissociation of the O-H bond of phenol has previously been studied, identifying the S_2/S_0 conical intersection as a critical point on the pathway (as well as an S_2/S_1 conical intersection).³⁸ Given in Table 10 are selected geometrical parameters, while the XMS-CASPT2 geometry is shown in Figure S7. Most methods show good quantitative agreement with the XMS-CASPT2

geometry, except BP-BHLYP, which, while appearing qualitatively correct, exhibits significant quantitative differences from the XMS-CASPT2 geometry.

Parameter	BHLYP			ω B97X			CASSCF	XMS-CASPT2
	NAC	PC	BP	NAC	PC	BP		
C1 – O	1.327	1.350	1.400	1.335	1.350	1.350	1.350	1.363
O – H	0.958	0.943	0.952	0.966	0.943	0.943	0.943	0.967
C1 – C2	1.445	1.455	1.619	1.441	1.455	1.455	1.455	1.450
C2 – C3	1.421	1.456	1.264	1.446	1.456	1.456	1.456	1.453
C3 – C4	1.492	1.455	1.518	1.464	1.455	1.455	1.455	1.453
C4 – C5	1.435	1.461	1.679	1.433	1.461	1.461	1.461	1.453
C2-C3-C4	84.2	84.5	101.8	81.9	84.5	84.5	84.5	83.0
H-O-C1-C2	162.9	165.9	152.2	174.9	165.9	165.9	165.9	168.5
O-C1-C2-H	-18.5	-31.1	-43.0	-27.4	-31.1	-31.1	-31.1	-28.5
C1-C2-C3-H	-176.4	-169.6	-176.2	-169.9	-169.6	-169.6	-169.6	-170.4

Table 10. Selected geometrical parameters for the S_1/S_0 MECP of phenol, using the 6-31G(d,p) basis set. Atom numbering taken from Figure 1.

SMAC

Zhao, Liu and Zhou investigated the photoinduced isomerization mechanism of SMAC.³⁹ In particular, they identified five MECP conical intersections using CASSCF. One of these is related to the excited-state intramolecular proton transfer (ESIPT) process, while the other four involve rotation (denoted as TW, for twist) around the C=N bond (see Figure 1). We retain the authors'

original naming convention for each of the conical intersection geometries here for convenience. For the ESIPT conical intersection, the XMS-CASPT2 geometry has the C-N-C(methyl) plane perpendicular to the plane of the aromatic ring (Figure 6). The PC-BHHLYP, PC- ω B97X and NAC-BHHLYP methods all qualitatively match the XMS-CASPT2 geometry, albeit with some significant differences quantitatively, especially the O – H distance (Table 11). The best quantitative correlation occurs for PC- ω B97X functional. The BP-BHHLYP geometry shows an angle of $\sim 45^\circ$ between the two planes formed by the ring and the substituent, while the BP- ω B97X and NAC- ω B97X geometries exhibit near-planarity (Figure 6).

Parameter	BHHLYP			ω B97X			CASSCF ^a	XMS-CASPT2
	NAC	PC	BP	NAC	PC	BP		
C1 – C2	1.471	1.446	1.540	1.419	1.489	1.419	1.460	1.468
C2 – N	1.384	1.301	1.390	1.360	1.395	1.358	1.366	1.381
C5 – C1	1.723	1.722	1.727	1.777	1.711	1.776	1.733	1.722
O – H	3.624	3.318	4.191	4.928	3.614	4.879	3.307	3.193
N – H	1.003	1.012	1.006	1.013	1.014	1.018	0.995	1.012
C4-C1-C2-N	107.2	102.1	147.3	174.5	109.2	163.4	85.3	81.4
C1-C2-N-C3	-170.0	-167.9	-162.8	-177.3	-169.3	-175.9	-154.1	-145.0
H-O-C4-C1	-36.5	-36.5	-33.0	-11.1	-33.8	-19.1	-37.7	-38.8

Table 11. Selected geometrical parameters for the “ESIPT” conical intersection of SMAC, using the 6-31G(d,p) basis set. Atom numbering taken from Figure 1. ^aTaken from reference ³⁹

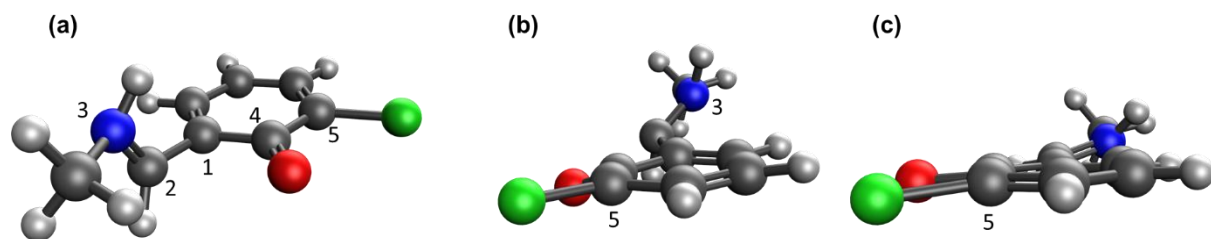


Figure 6. Calculated geometries for the ESIPT conical intersection of SMAC; (a) XMS-CASPT2, (b) BP-BHHLYP, (c) BP- ω B97X. Carbon atoms are grey; nitrogen atoms blue, oxygen atoms red and chlorine green. Selected atom numbers are shown for clarity.

The two XMS-CASPT2 conical intersection geometries, labelled “TWin1” and “TWin2”, show the N-CH₃ perpendicular to the plane of the aromatic ring, with the methyl group pointing down or up, respectively (see Figures S8(b) and S8(c)). In all cases, the SF-TDDFT methods are qualitatively similar to the XMS-CASPT2 geometries, with fairly good quantitative agreement (Tables 12 and 13) for most geometrical parameters.

Parameter	BHHLYP			ω B97X			CASSCF ^a	XMS-CASPT2
	NAC	PC	BP	NAC	PC	BP		
C1 – C2	1.411	1.402	1.399	1.368	1.399	1.393	1.416	1.440
C2 – N	1.412	1.438	1.433	1.427	1.468	1.471	1.399	1.391
C5 – C1	1.740	1.736	1.738	1.738	1.738	1.741	1.767	1.731
O – H	0.959	0.958	0.959	0.966	0.966	0.965	0.945	0.991
C4-C1-C2-N	-6.3	-7.6	-5.3	-2.1	-16.5	4.7	-0.9	-9.0
C1-C2-N-C3	-91.0	-86.6	-88.7	-89.2	-76.5	-95.4	-92.3	-88.2
H-O-C4-C1	-31.1	-22.7	-34.3	-42.1	-41.1	-61.1	-31.5	-8.0

Table 12. Selected geometrical parameters for the “TWin1” conical intersection of SMAC, using the 6-31G(d,p) basis set. Atom numbering taken from Figure 1. ^aTaken from reference ³⁹

Parameter	BHHLYP			ω B97X			CASSCF ^a	XMS-CASPT2
	NAC	PC	BP	NAC	PC	BP		
C1 – C2	1.409	1.381	1.395	1.368	1.411	1.392	1.416	1.440
C2 – N	1.408	1.449	1.346	1.429	1.470	1.469	1.399	1.392
C5 – C1	1.739	1.751	1.738	1.738	1.737	1.738	1.767	1.731
O – H	0.959	1.170	0.957	0.966	0.967	0.966	0.945	0.991
C4-C1-C2-N	7.3	-1.3	2.0	4.0	21.8	-6.1	0.9	9.2
C1-C2-N-C3	88.7	93.2	91.2	88.1	72.3	95.4	92.3	88.1
H-O-C4-C1	31.1	34.8	40.5	40.7	34.6	58.7	31.3	8.1

Table 13. Selected geometrical parameters for the “TWin2” conical intersection of SMAC, using the 6-31G(d,p) basis set. Atom numbering taken from Figure 1. ^aTaken from reference ³⁹

The XMS-CASPT2 geometries for the “TWout1” and “TWout2” conical intersections are similar to above, but the -OH proton points away from the nitrogen atom (while for “TWin1” and “TWin2” the proton points towards the nitrogen atom; see Figures S8(d) and S8(e)). Each of the SF-TDDFT approaches show good qualitative agreement with XMS-CASPT2 for “TWout1”, although some of the bond lengths are different by as much as 0.1 Å (Table 14). The ω B97X functional is qualitatively correct for “TWout2” compared to XMS-CASPT2 for each of the methods considered, but PC-BHHLYP and NAC-BHHLYP show very different features (Table 15 and Figure 7), with a significant kink in the ring at position 1 (see Figure 1 for atom numbering).

Parameter	BHHLYP			ω B97X			CASSCF ^a	XMS-CASPT2
	NAC	PC	BP	NAC	PC	BP		
C1 – C2	1.409	1.380	1.397	1.380	1.376	1.380	1.438	1.454
C2 – N	1.369	1.468	1.397	1.389	1.473	1.468	1.374	1.361
C5 – C1	1.753	1.751	1.752	1.751	1.752	1.751	1.752	1.745
O – H	0.957	0.965	0.957	0.967	0.965	0.965	0.944	0.969
C4-C1-C2-N	10.2	17.7	7.1	7.7	6.5	17.7	8.9	14.5
C1-C2-N-C3	-98.5	-104.0	-96.9	-99.8	-92.8	-104.0	-97.2	-98.5
H-O-C4-C1	-177.5	-176.5	-177.5	-176.4	-176.6	-176.5	-176.1	-178.2

Table 14. Selected geometrical parameters for the “TWout1” conical intersection of SMAC, using the 6-31G(d,p) basis set. Atom numbering taken from Figure 1. ^aTaken from reference ³⁹

Parameter	BHHLYP			ω B97X			CASSCF ^a	XMS-CASPT2
	NAC	PC	BP	NAC	PC	BP		
C1 – C2	1.404	1.404	1.399	1.382	1.384	1.381	1.419	1.454
C2 – N	1.282	1.286	1.391	1.388	1.444	1.450	1.379	1.361
C5 – C1	1.719	1.719	1.752	1.751	1.751	1.751	1.778	1.745
O – H	0.956	0.956	0.957	0.966	0.966	0.966	0.943	0.969
C4-C1-C2-N	-31.6	31.6	-4.9	-7.1	-1.7	-1.3	-11.1	-14.5
C1-C2-N-C3	178.3	178.5	92.7	98.8	87.4	87.2	98.8	98.5
H-O-C4-C1	163.8	161.5	173.6	176.9	173.9	173.8	175.8	178.2

Table 15. Selected geometrical parameters for the “TWout2” conical intersection of SMAC, using the 6-31G(d,p) basis set. Atom numbering taken from Figure 1. ^aTaken from reference ³⁹

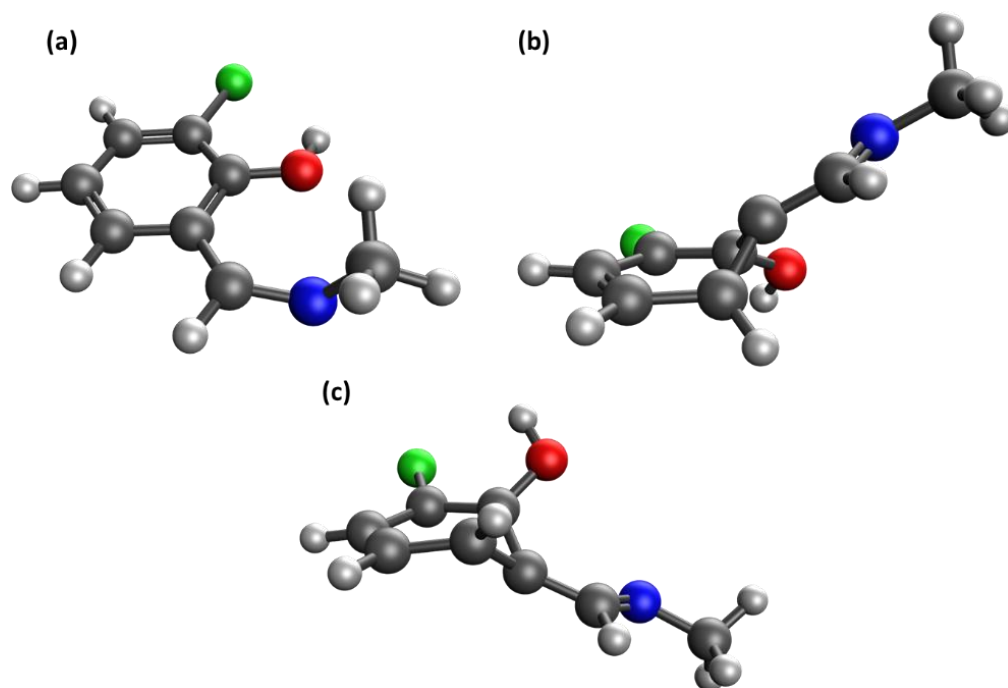


Figure 7. Calculated geometries for the TWout2 conical intersection of SMAC; (a) XMS-CASPT2, (b) PC-BHHLYP, (c) NAC-BHHLYP.

Discussion

The convergence of a conical intersection geometry optimization with SF-TDDFT was often challenging. However, for some of the SF-TDDFT approaches (and basis sets) considered here, the optimization problem seems almost pathological. The two molecules, 4ABN and azomethane, hint at such problems. In both cases, several of the SF-TDDFT methods failed to achieve convergence using the 6-31G(d) basis set (as used in references ³³ and ³⁷), but the geometry converged smoothly with the larger 6-31G(d,p) basis set. Using this converged geometry as a guess, the 6-31G(d) calculations then swiftly converged, suggesting that the choice of method is relatively insensitive in the immediate region of a conical intersection; the problem is getting to such a region!

Segarra-Marti, Tran and Bearpark also demonstrated the need to include dynamical correlation in conical intersection geometry optimizations, by employing XMS-CASPT2.¹⁷ In some cases, there were significant differences between CASSCF and XMS-CASPT2. We expect the geometrical parameters coincident with the **g** and **h** vectors to be accurately described by CASSCF, but other bond lengths may be expected to be longer. Indeed, we found in a few cases differences between the calculated geometries from XMS-CASPT2 and CASSCF (e.g. 9H-adenine; see Table 5). In addition, the successful application of CASSCF (and, by extension, XMS-CASPT2) is limited by the choice of active space, which itself may be limited by (a) an inexperienced user, and / or (b) technical limitations within a given piece of software. The second of these limitations is noted for 9H-adenine, where the authors were restricted to (6,6) for the conical intersection search, despite identifying the “correct” active space as 12 electrons in 10 orbitals.³⁵

In some cases in the current work, where the SF-TDDFT-based method failed to give a qualitatively correct geometry for a conical intersection, we tried starting from the CASSCF and/or XMS-CASPT2 geometries and re-optimising, e.g. 4ABN (Figure 2) and 2,4,6-octatriene (Figure 5). In each of these cases, the combination of algorithm and functional (plus basis set) led the geometry away from that determined by XMS-CASPT2 to the qualitatively incorrect structures observed. This was mainly observed when non-adiabatic coupling terms were neglected (i.e. the PC or BP approaches), or in the case of the ESIPT MECP of SMAC, with NAC- ω B97X. This agrees well with the work of Herbert et al.,⁴⁸ who recommend the use of BHLYP when identifying MECP structures with SF-TDDFT.

Given in Table 16 are the mean deviations, mean unsigned deviations and maximum errors for the geometrical parameters. While the mean deviations look very encouraging, the mean unsigned error is a more realistic measure for each of the geometrical parameters. The maximum errors are due to the few cases noted above, in particular the failure of PC- ω B97X to correctly describe the 2,4,6-octatriene MECP. While spin-contamination can be an issue with SF-TDDFT, in the case of 2,4,6-octatriene with $\langle S^2 \rangle$ values stay well below the default thresholds (1.20) and the failure can thus be attributed to the penalty-constrained projection algorithm, rather than SF-TDDFT. While NAC- ω B97X fails to correctly describe the ESIPT MECP of SMAC, NAC-BHLYP matches the XMS-CASPT2 geometry. Once again, spin-contamination is not an issue here; Herbert et al. recommend the use of BHLYP when using SF-TDDFT and our results confirm this. We also calculated s^x and s^y tilt parameters⁴⁸, which confirmed each of the MECP geometries obtained in this study had a peaked topology.

The BP-BHHLYP and PC-BHHLYP approaches show generally good agreement with the XMS-CASPT2 computed MECP geometries; they also closely match the NAC-BHHLYP geometries, with less computational effort required. The BP- ω B97X approach also shows reasonable agreement, but the PC- ω B97X shows some significant deviations. The relative energetics for each molecule considered are given in Tables S2-S20 and Figure S9 in the Supporting Information. The qualitative picture here is generally good in comparison to the XMS-CASPT2 energies, with a few exceptions (related to the qualitative disagreement of the MECP geometries). For 9H-adenine, only CASSCF qualitatively matches the gap relative to the vertical excitation energy for the MECP energy; this is lower than the vertical excitation energy, while all of the SF-TDDFT approaches give a relative energy higher than the vertical excitation energy. The deviation from the XMS-CASPT2 energies in most cases is within 1 eV with largely the correct qualitative trend, but with relatively low quantitative accuracy. We note that NAC-BHHLYP most closely follows the XMS-CASPT2 relative energy values (Figure S9), while PC-BHHLYP and PC- ω B97X both outperform the branching plane update method.

			BHLYP			ω B97X		
		CASSCF	NAC	PC	BP	NAC	PC	BP
BONDS	Mean	-0.006	-0.008	0.001	0.001	-0.004	0.005	-0.001
	deviation							
	MUE	0.019	0.024	0.032	0.034	0.024	0.032	0.026
	Max	0.111	0.119	0.185	0.226	0.105	0.113	0.107
ANGLES	Mean	0.9	-1.8	-1.0	0.6	-1.5	-3.8	-0.4
	deviation							
	MUE	2.0	3.2	2.9	4.5	3.4	6.4	4.3
	Max	5.6	16.1	16.1	18.8	16.1	16.1	16.1
DIHEDRALS	Mean	1.3	1.2	1.7	-0.8	1.5	1.6	-0.7
	deviation							
	MUE	7.3	13.9	13.9	13.2	13.9	18.4	18.3
	Max	34.9	93.8	93.8	93.8	98.8	102.1	98.7

Table 16. Mean deviation, mean unsigned deviations and maximum deviations for CASSCF and each of the SF-TDDFT methods considered in this work.

Conclusions

We have studied different SF-TDDFT-based approaches for optimizing conical intersection geometries and compared them to the XMS-CASPT2 method. NAC-BHHLYP is the most reliable method for calculating the MECP geometries, but BP-BHHLYP and PC-BHHLYP also demonstrate good agreement, while having a substantially reduced computational cost in comparison to NAC-BHHLYP. Keal, Koslowski and Thiel⁴⁹ concluded that the penalty-constrained approach should only be used where full non-adiabatic coupling terms cannot be calculated; while we have demonstrated that PC-BHHLYP appears to be reliable in most situations, we would also agree that NAC-BHHLYP should be employed where possible. For reasonable relative energetics, only the NAC-BHHLYP approach can be recommended; thus, initial MECP optimization could be performed by PC-BHHLYP and refined by NAC-BHHLYP.

ASSOCIATED CONTENT

Supporting Information. XMS-CASPT2 geometries for each of the conical intersections. The following files are available free of charge.

Conical intersection comparisons – SI.pdf

AUTHOR INFORMATION

Corresponding Author

*david.robinson@ntu.ac.uk

Author Contributions

The manuscript was written through contributions of all authors. All authors have given approval to the final version of the manuscript.

ACKNOWLEDGMENT

We thank the School of Science and Technology (NTU) for the provision of the Hamilton High Performance Computing cluster on which this work was performed. MW thanks NTU for a studentship, during which this work was performed.

REFERENCES

- (1) Hagfeldt, A.; Boschloo, G.; Sun, L.; Kloo, L.; Pettersson, H. Dye-Sensitized Solar Cells. *Chem. Rev.* **2010**, *110*, 6595–6663.
- (2) Gonçalves, M. S. T. Fluorescent Labeling of Biomolecules with Organic Probes. *Chem. Rev.* **2009**, *109*, 190–212.
- (3) Wu, D.; Sedgwick, A. C.; Gunnlaugsson, T.; Akkaya, E. U.; Yoon, J.; James, T. D. Fluorescent Chemosensors: The Past, Present and Future. *Chem. Soc. Rev.* **2017**, *46*, 7105–7123.
- (4) Altan Bozdemir, O.; Erbas-Cakmak, S.; Ekiz, O. O.; Dana, A.; Akkaya, E. U. Towards Unimolecular Luminescent Solar Concentrators: Bodipy-Based Dendritic Energy-Transfer Cascade with Panchromatic Absorption and Monochromatized Emission. *Angew. Chemie Int. Ed.* **2011**, *50*, 10907–10912.
- (5) Kamkaew, A.; Lim, S. H.; Lee, H. B.; Kiew, L. V.; Chung, L. Y.; Burgess, K. BODIPY Dyes in Photodynamic Therapy. *Chem. Soc. Rev.* **2013**, *42*, 77–88.
- (6) Partridge, W. P.; Johnson, C. C.; Steppel, R. N.; Laurendeau, N. M. Performance of Pyrromethene 580 and 597 in a Commercial Nd:YAG-Pumped Dye-Laser System. *Opt. Lett.* **1994**, *19*, 1630.
- (7) García-Moreno, I.; Amat-Guerri, F.; Liras, M.; Costela, A.; Infantes, L.; Sastre, R.; López Arbeloa, F.; Bañuelos Prieto, J.; López Arbeloa, Í. Structural Changes in the BODIPY Dye PM567 Enhancing the Laser Action in Liquid and Solid Media. *Adv. Funct. Mater.* **2007**, *17*, 3088–3098.

- (8) Jagtap, K. K.; Maity, D. K.; Ray, A. K.; Dasgupta, K.; Ghosh, S. K. High Efficiency Dye Laser with Low Fluorescence Yield Pyrromethene Dyes: Experimental and Theoretical Studies. *Appl. Phys. B Lasers Opt.* **2011**, *103*, 917–924.
- (9) Robinson, D. Comparison of the Transition Dipole Moments Calculated by TDDFT with High Level Wave Function Theory. *J. Chem. Theory Comput.* **2018**, *14*, 5303–5309.
- (10) Yarkony, D. R. Nonadiabatic Quantum Chemistry-Past, Present, and Future. *Chem. Rev.* **2012**, *112*, 481–498.
- (11) Szalay, P. G.; Müller, T.; Gidofalvi, G.; Lischka, H.; Shepard, R. Multiconfiguration Self-Consistent Field and Multireference Configuration Interaction Methods and Applications. *Chem. Rev.* **2012**, *112*, 108–181.
- (12) Minezawa, N.; Gordon, M. S. Optimizing Conical Intersections by Spin-Flip Density Functional Theory: Application to Ethylene. *J. Phys. Chem. A* **2009**, *113*, 12749–12753.
- (13) Filatov, M. Assessment of Density Functional Methods for Obtaining Geometries at Conical Intersections in Organic Molecules. *J. Chem. Theory Comput.* **2013**, *9*, 4526–4541.
- (14) Nikiforov, A.; Gamez, J. A.; Thiel, W.; Huix-Rotllant, M.; Filatov, M. Assessment of Approximate Computational Methods for Conical Intersections and Branching Plane Vectors in Organic Molecules. *J. Chem. Phys.* **2014**, *141*.
- (15) Zhang, X.; Herbert, J. M. Excited-State Deactivation Pathways in Uracil versus Hydrated Uracil: Solvatochromatic Shift in the $1n\pi^*$ State Is the Key. *J. Phys. Chem. B* **2014**, *118*, 7806–7817.

- (16) Barbatti, M.; Lischka, H. Nonadiabatic Deactivation of 9H-Adenine: A Comprehensive Picture Based on Mixed Quantum-Classical Dynamics. *J. Am. Chem. Soc.* **2008**, *130*, 6831–6839.
- (17) Segarra-Martí, J.; Tran, T.; Bearpark, M. J. Ultrafast and Radiationless Electronic Excited State Decay of Uracil and Thymine Cations: Computing the Effects of Dynamic Electron Correlation. *Phys. Chem. Chem. Phys.* **2019**, *21*, 14322–14330.
- (18) Shiozaki, T.; Győrffy, W.; Celani, P.; Werner, H.-J. Communication: Extended Multi-State Complete Active Space Second-Order Perturbation Theory: Energy and Nuclear Gradients. *J. Chem. Phys.* **2011**, *135*, 081106.
- (19) Boggio-Pasqua, M.; Bearpark, M. J. Using Density Functional Theory Based Methods to Investigate the Photophysics of Polycyclic Aromatic Hydrocarbon Radical Cations: A Benchmark Study on Naphthalene, Pyrene and Perylene Cations. *ChemPhotoChem* **2019**, *3*, 763–769.
- (20) MacLeod, M. K.; Shiozaki, T. Communication: Automatic Code Generation Enables Nuclear Gradient Computations for Fully Internally Contracted Multireference Theory. *J. Chem. Phys.* **2015**, *142*, 051103.
- (21) Vlaisavljevich, B.; Shiozaki, T. Nuclear Energy Gradients for Internally Contracted Complete Active Space Second-Order Perturbation Theory: Multistate Extensions. *J. Chem. Theory Comput.* **2016**, *12*, 3781–3787.
- (22) Park, J. W.; Shiozaki, T. Analytical Derivative Coupling for Multistate CASPT2 Theory. *J. Chem. Theory Comput.* **2017**, *13*, 2561–2570.

- (23) Park, J. W.; Shiozaki, T. On-the-Fly CASPT2 Surface-Hopping Dynamics. *J. Chem. Theory Comput.* **2017**, *13*, 3676–3683.
- (24) Shao, Y.; Head-Gordon, M.; Krylov, A. I. The Spin-Flip Approach within Time-Dependent Density Functional Theory: Theory and Applications to Diradicals. *J. Chem. Phys.* **2003**, *118*, 4807–4818.
- (25) Zhang, X.; Herbert, J. M. Analytic Derivative Couplings for Spin-Flip Configuration Interaction Singles and Spin-Flip Time-Dependent Density Functional Theory. *J. Chem. Phys.* **2014**, *141*, 064104.
- (26) Levine, B. G.; Coe, J. D.; Martínez, T. J. Optimizing Conical Intersections without Derivative Coupling Vectors: Application to Multistate Multireference Second-Order Perturbation Theory (MS-CASPT2). *J. Phys. Chem. B* **2008**, *112*, 405–413.
- (27) Maeda, S.; Ohno, K.; Morokuma, K. Updated Branching Plane for Finding Conical Intersections without Coupling Derivative Vectors. *J. Chem. Theory Comput.* **2010**, *6*, 1538–1545.
- (28) Bearpark, M. J.; Robb, M. A.; Bernhard Schlegel, H. A Direct Method for the Location of the Lowest Energy Point on a Potential Surface Crossing. *Chem. Phys. Lett.* **1994**, *223*, 269–274.
- (29) Shiozaki, T. BAGEL: Brilliantly Advanced General Electronic-Structure Library. *Wiley Interdiscip. Rev. Comput. Mol. Sci.* **2018**, *8*, e1331.
- (30) BAGEL, Brilliantly Advanced General Electronic-Structure Library.

[Http://Www.Nubakery.Org](http://www.nubakery.org).

- (31) Werner, H.-J.; Knowles, P. J.; Knizia, G.; Manby, F. R.; Schütz, M. Molpro: A General-Purpose Quantum Chemistry Program Package. *Wiley Interdiscip. Rev. Comput. Mol. Sci.* **2012**, *2*, 242–253.
- (32) Sicilia, F.; Bearpark, M. J.; Blancafort, L.; Robb, M. A. An Analytical Second-Order Description of the S₀/S₁ Intersection Seam: Fulvene Revisited. *Theor. Chem. Acc.* **2007**, *118*, 241–251.
- (33) Castro, P. J.; Perveaux, A.; Lauvergnat, D.; Reguero, M.; Lasorne, B. Ultrafast Internal Conversion in 4-Aminobenzonitrile Occurs Sequentially along the Seam. *Chem. Phys.* **2018**, *509*, 30–36.
- (34) Blancafort, L.; Cohen, B.; Hare, P. M.; Kohler, B.; Robb, M. A. Singlet Excited-State Dynamics of 5-Fluorocytosine and Cytosine: An Experimental and Computational Study. *J. Phys. Chem. A* **2005**, *109*, 4431–4436.
- (35) Perun, S.; Sobolewski, A. L.; Domcke, W. Ab Initio Studies on the Radiationless Decay Mechanisms of the Lowest Excited Singlet States of 9H-Adenine. *J. Am. Chem. Soc.* **2005**, *127*, 6257–6265.
- (36) Chattopadhyay, A.; Saini, P.; Hakim, R.; Komainda, A.; Köppel, H. A Computational Investigation on the Photo-Isomerization of 2,4,6-Octatriene and Its UV–Visible Spectrum. *Chem. Phys.* **2018**, *509*, 98–105.
- (37) Ghosh, J.; Bhaumik, S.; Bhattacharya, A. Comparison of Internal Conversion Dynamics of

- Azo and Azoxy Energetic Moieties through the (S1/S0)CI Conical Intersection: An Ab Initio Multiple Spawning Study. *Chem. Phys.* **2018**, *513*, 221–229.
- (38) Tseng, C. M.; Lee, Y. T.; Lin, M. F.; Ni, C. K.; Liu, S. Y.; Lee, Y. P.; Xu, Z. F.; Lin, M. C. Photodissociation Dynamics of Phenol. *J. Phys. Chem. A* **2007**, *111*, 9463–9470.
- (39) Zhao, L.; Liu, J.; Zhou, P. The Photoinduced Isomerization Mechanism of the 2-(1-(Methylimino)Methyl)-6-Chlorophenol (SMAC): Nonadiabatic Surface Hopping Dynamics Simulations. *J. Chem. Phys.* **2018**, *149*, 034309.
- (40) Becke, A. D. A New Mixing of Hartree–Fock and Local Density-functional Theories. *J. Chem. Phys.* **1993**, *98*, 1372–1377.
- (41) Lee, C.; Yang, W.; Parr, R. G. Development of the Colle-Salvetti Correlation-Energy Formula into a Functional of the Electron Density. *Phys. Rev. B* **1988**, *37*, 785–789.
- (42) Chai, J.-D.; Head-Gordon, M. Systematic Optimization of Long-Range Corrected Hybrid Density Functionals. *J. Chem. Phys.* **2008**, *128*, 084106.
- (43) Huix-Rotllant, M.; Natarajan, B.; Ipatov, A.; Muhavini Wawire, C.; Deutsch, T.; Casida, M. E. Assessment of Noncollinear Spin-Flip Tamm-Dancoff Approximation Time-Dependent Density-Functional Theory for the Photochemical Ring-Opening of Oxirane. *Phys. Chem. Chem. Phys.* **2010**, *12*, 12811–12825.
- (44) Mardirossian, N.; Head-Gordon, M. Thirty Years of Density Functional Theory in Computational Chemistry: An Overview and Extensive Assessment of 200 Density Functionals. *Mol. Phys.* **2017**, *115*, 2315–2372.

- (45) Hirata, S.; Head-Gordon, M. Time-Dependent Density Functional Theory within the Tamm–Dancoff Approximation. *Chem. Phys. Lett.* **1999**, *314*, 291–299.
- (46) Shao, Y.; Gan, Z.; Epifanovsky, E.; Gilbert, A. T. B.; Wormit, M.; Kussmann, J.; Lange, A. W.; Behn, A.; Deng, J.; Feng, X.; et al. Advances in Molecular Quantum Chemistry Contained in the Q-Chem 4 Program Package. *Mol. Phys.* **2015**, *113*, 184–215.
- (47) Mennucci, B.; Toniolo, A.; Tomasi, J. Theoretical Study of the Photophysics of Adenine in Solution: Tautomerism, Deactivation Mechanisms, and Comparison with the 2-Aminopurine Fluorescent Isomer. *J. Phys. Chem. A* **2001**, *105*, 4749–4757.
- (48) Herbert, J. M.; Zhang, X.; Morrison, A. F.; Liu, J. Beyond Time-Dependent Density Functional Theory Using Only Single Excitations: Methods for Computational Studies of Excited States in Complex Systems. *Acc. Chem. Res.* **2016**, *49*, 931–941.
- (49) Keal, T. W.; Koslowski, A.; Thiel, W. Comparison of Algorithms for Conical Intersection Optimisation Using Semiempirical Methods. *Theor. Chem. Acc.* **2007**, *118*, 837–844.

TOC graphic

