



## Demographic effects of road mortality on mammalian populations; a systematic review

Journal:	<i>Biological Reviews</i>
Manuscript ID	BRV-06-2022-0182.R2
Manuscript Type:	Original Article
Date Submitted by the Author:	n/a
Complete List of Authors:	Moore, Lauren; Nottingham Trent University, School of Animal, Rural, and Environmental Sciences Petrovan, Silviu; University of Cambridge, Department of Zoology Bates, Adam; Nottingham Trent University, School of Animal, Rural, and Environmental Sciences Hicks, Helen; Nottingham Trent University, School of Animal, Rural, and Environmental Sciences Baker, Philip; University of Reading, School of Biological Sciences Perkins, Sarah; Cardiff University, School of Biosciences Yarnell, Richard; Nottingham Trent University School of Animal Rural and Environmental Sciences
Keywords:	Dispersal, Genetic diversity, Migration, Population growth, Population persistence, Roadkill, Study design, Survival

**Demographic effects of road mortality on mammalian populations: a systematic review**

Lauren J. Moore<sup>1,\*</sup>, Silviu O. Petrovan<sup>2</sup>, Adam J. Bates<sup>1</sup>, Helen L. Hicks<sup>1</sup>, Philip J. Baker<sup>3</sup>, Sarah E. Perkins<sup>4</sup> and Richard W. Yarnell<sup>1</sup>

<sup>1</sup>*School of Animal, Rural and Environmental Sciences, Nottingham Trent University, Brackenhurst Lane, Southwell NG25 0QF, Nottinghamshire, UK*

<sup>2</sup>*Department of Zoology, University of Cambridge, The David Attenborough Building, Pembroke Street, Cambridge CB2 3QZ, Cambridgeshire, UK*

<sup>3</sup>*School of Biological Sciences, University of Reading, Whiteknights, Reading RG6 6AH, Berkshire, UK*

<sup>4</sup>*School of Biosciences, Cardiff University, Sir Martin Evans Building, Museum Avenue, Cardiff CF10 3AX, UK*

\*Author for correspondence (E-mail: lauren.moore@ntu.ac.uk; Tel.: +44 (0)115 941 8418).

**ABSTRACT**

In light of rapidly expanding road networks worldwide, there is increasing global awareness of the growing amount of mammalian roadkill. However, the ways in which road mortality affects the population dynamics of different species remains largely unclear. We aimed to categorise the demographic parameters in mammalian populations around the world that are directly or indirectly affected by road mortality, as well as identify the most effective study designs for quantifying population-level consequences of road mortality. We conducted a

comprehensive systematic review to synthesise literature published between 2000 and 2021 and out of 11,238 unique studies returned, 83 studies were retained comprising 69 mammalian species and 150 populations. A bias towards research-intensive countries and larger mammals was apparent. Although searches were conducted in five languages, all studies meeting the inclusion criteria were in English. Relatively few studies (13.3%) provided relevant demographic context to roadkill figures, hampering understanding of the impacts on population persistence. We categorised five direct demographic parameters affected by road mortality: sex- and age-biased mortality, the percentage of a population killed on roads per year (values up to 50% were reported), the contribution of roadkill to total mortality rates (up to 80%), and roadkill during inter-patch or long-distance movements. Female-biased mortality may be more prevalent than previously recognised and is likely to be critical to population dynamics. Roadkill was the greatest source of mortality for 28% of studied populations and both additive and compensatory mechanisms to roadkill were found to occur, bringing varied challenges to conservation around roads. In addition, intra-specific population differences in demographic effects of road mortality were common. This highlights that the relative importance of road mortality is likely to be context specific as the road configuration and habitat quality surrounding a population can vary. Road ecology studies that collect data on key life parameters, such as age/stage/sex-specific survival and dispersal success, and that use a combination of methods are critical in understanding long-term impacts. Quantifying the demographic impacts of road mortality is an important yet complex consideration for proactive road management.

*Key words:* dispersal, genetic diversity, migration, population growth, population persistence, roadkill, study design, survival.

1		
2		
3	50	CONTENTS
4		
5	51	I. Introduction
6		
7	52	II. Materials and methods
8		
9		
10	53	(1) Literature search
11		
12	54	(2) Screening and inclusion criteria
13		
14	55	(3) Data extraction, qualitative synthesis, and quantitative analysis
15		
16		
17	56	III. Results
18		
19	57	(1) Overall results from the scientific literature
20		
21	58	(2) Description of direct demographic parameters
22		
23		
24	59	(a) Percentage of a population killed on roads per year
25		
26	60	(b) Contribution to total mortality
27		
28	61	(c) Sex-biased road mortality
29		
30	62	(d) Age-biased road mortality
31		
32		
33	63	(e) Roadkill during inter-patch or long-distance movements
34		
35	64	(3) Description of indirect demographic parameters
36		
37		
38	65	(a) Population growth rates
39		
40	66	(b) Population persistence
41		
42	67	(c) Genetic diversity
43		
44		
45	68	IV. Discussion
46		
47	69	(1) Direct demographic parameters
48		
49	70	(a) Depletion effects
50		
51	71	(b) Sex- and age-biased road mortality
52		
53		
54	72	(c) Roadkill during inter-patch or long-distance movements
55		
56	73	(2) Indirect demographic parameters
57		
58	74	(3) Compensatory and additive mechanisms of road mortality
59		
60		

75 (4) Considerations for road ecology study design

76 (a) Improving study design

77 (5) Future research directions

78 V. Conclusions

79 VI. Acknowledgements

80 VII. References

81 VIII. Supporting information

82

## 83 I. INTRODUCTION

84 Recent estimates suggest that there are 21.6 million kilometres of roads globally, with an  
85 expected increase of 14–23% in road length by 2050 (Meijer *et al.*, 2018). Consequently,  
86 many conservation biologists argue that the effects of roads on wild animal populations are  
87 one of the most pressing contemporary conservation issues (Ibisch *et al.*, 2016; Barrientos *et*  
88 *al.*, 2021). Whilst roads cause substantial habitat loss, fragmentation, pollution (light, noise,  
89 chemical) and changes in animal movement (Carvalho *et al.*, 2018), the mortality caused by  
90 wildlife–vehicle collisions (WVCs) is perhaps the most obvious impact and has therefore  
91 received particular attention. Road mortality is considered one of the largest contributors to  
92 wild vertebrate mortality globally and, unlike other forms of direct anthropogenic mortality,  
93 it affects individuals irrespective of their body size, physical condition, and conservation  
94 status (Hill, DeVault & Belant, 2019).

95 Raw counts of the numbers of animals killed per unit length of road (hereafter ‘roadkill’)  
96 have been published for a broad range of vertebrate taxa. However, these raw counts alone  
97 provide little information about the impacts of WVCs on populations (Grilo *et al.*, 2021).  
98 Instead, roadkill counts need to be considered in relation to population demography. With  
99 this context, it is then possible to avoid simplistic or erroneous conclusions that a high

1  
2  
3  
4  
5  
6  
7  
8  
9  
10  
11  
12  
13  
14  
15  
16  
17  
18  
19  
20  
21  
22  
23  
24  
25  
26  
27  
28  
29  
30  
31  
32  
33  
34  
35  
36  
37  
38  
39  
40  
41  
42  
43  
44  
45  
46  
47  
48  
49  
50  
51  
52  
53  
54  
55  
56  
57  
58  
59  
60

roadkill rate is inevitably debilitating for a population or that low levels of road mortality are not negatively impacting populations (Ramp & Ben-Ami, 2006; Grilo *et al.*, 2021). In addition, impacts of road mortality are likely to be confounded by other forms of change around roads, such as habitat modification (Chambers & Bencini, 2010) and road effect zones (Ibisch *et al.*, 2016). To disentangle road mortality from other road impacts, demographic parameters must be quantified to reveal the relative importance of road mortality and if/how road mortality might be responsible for the observed population dynamics. For example, Jaeger & Fahrig (2001) and Ceia-Hasse *et al.* (2018) used individual-based models of ‘virtual’ species and demonstrated that road mortality is likely to have a greater impact on population persistence than barrier effects because of the cumulative depletion of individuals and lower connectivity when roadkill rates were high. Finally, by using population dynamics, studies can identify populations most at risk from roads and the specific threats against those populations, such that conservation strategies and actions can be defined and prioritised. Approximately 27% of mammalian species are considered to be threatened with extinction (IUCN, 2020). However, most theoretical and empirical studies on the demographic impacts of road mortality to date have focused on reptiles and birds. For example, Borda-de-Água, Grilo & Pereira (2014) developed a stochastic, age-structured model and found that an annual road mortality rate of 5% can reduce barn owl (*Tyto alba*) populations to half their original size in 50 years. Population declines and/or biased population sex ratios resulting from even relatively low rates of female road mortality have been described for black ratsnakes (*Elaphe obsoleta*) (Row, Blouin-Demers & Weatherhead, 2007) and freshwater turtles (Aresco, 2005). Like birds and herpetofauna, several mammalian groups, particularly small mammals and generalist carnivores, actively use roads as corridors for dispersal, routine movements or scavenging opportunities (Kautz *et al.*, 2021; Galantinho *et al.*, 2022). In doing so, individuals face an increase in the likelihood of vehicle collisions (Serieys *et al.*, 2021).

1  
2  
3 125 Unlike other taxa however, vehicle collisions with mammals have shown a pronounced  
4  
5 126 increase over time in response to a growing human footprint (Hill *et al.*, 2019). Moreover,  
6  
7 127 hotspots of mammal roadkill are globally widespread (e.g. Coalition for Sonoran Desert  
8  
9 128 Protection, 2022; Fahrig & Rytwinski, 2009 and Grilo *et al.* (2021) identified several regions  
10  
11 129 where mammalian biodiversity may be lost due to the influence of existing transport  
12  
13 130 infrastructure. Mammalian road mortality therefore remains a crucial area of study for  
14  
15 131 conservationists.  
16  
17 132 Scientifically rigorous research into the demographic impacts of road mortality is key to  
18  
19 133 influencing road planning decisions (Roedenbeck *et al.*, 2007). Sound research is also  
20  
21 134 essential to justify recent and future mitigation projects, especially for large-scale, expensive  
22  
23 135 measures that are often targeted at medium and large mammalian species (Huijser *et al.*,  
24  
25 136 2009). Using study designs capable of producing field data with evidential weight, however,  
26  
27 137 can be challenging. The demography of a population can be poorly understood, obtaining  
28  
29 138 roadkill data can be time-consuming and expensive, and accuracy can decline because of low  
30  
31 139 carcass persistence for several taxa (Santos *et al.*, 2016). This particularly applies to taxa with  
32  
33 140 small body sizes, such as small mammals (e.g. mice, voles and bats), which not only have  
34  
35 141 lower detectability on roadkill surveys but have shorter persistence times compared to many  
36  
37 142 taxa due to the ease of being scavenged (Ruiz-Capillas, Mata & Malo, 2015). Small sample  
38  
39 143 sizes further preclude insight into long-term impacts on the structure and sustainability of  
40  
41 144 populations. In general, there is a trade-off between spending resources to understand one  
42  
43 145 population thoroughly, or several populations inadequately. As a result, guidance on how to  
44  
45 146 design and maximise outputs from road mortality studies remains an important yet unfulfilled  
46  
47 147 goal.  
48  
49 148 Although it is generally accepted that road mortality affects populations to some extent  
50  
51 149 (Rytwinski & Fahrig, 2015), the literature is lacking a clear consensus on *how* road mortality  
52  
53  
54  
55  
56  
57  
58  
59  
60

affects the persistence of populations. This systematic review aimed to synthesise and categorise the direct and indirect demographic parameters in mammalian populations around the world that are affected by road mortality, as well as identify the study designs with the greatest inferential strength for assessing road mortality impacts at the population scale. By using a standardised systematic review protocol, existing knowledge can be gathered in an unbiased and comprehensive overview. The extent to which a road affects population persistence may depend on the particular circumstances, such as road density, species behaviour, species-specific habitat quality, and other threats (Roedenbeck *et al.*, 2007). Therefore, the scope of the present systematic review was kept global and broad to synthesise the results from studies conducted under a variety of circumstances. A focus on mammals is not only critical for their conservation, given the increasing threat of extinction of many mammalian populations, the wide range of mammalian life-history strategies provides valuable insight into different, simultaneous mechanisms affecting population resilience or vulnerability to road mortality (Grilo *et al.*, 2021). Recognising the demographic parameters affected by road mortality, or alternatively how populations cope under additional mortality, allows wildlife managers and conservationists to make transparent, quantitative, and informed decisions. Moreover, an understanding of robust study designs is imperative to build a strong evidence base for the targeted and effective actions around roads that are sorely needed.

**II. MATERIALS AND METHODS**

**(1) Literature search**

Following the identification of a relevant topic, research aims were developed in consultation with external subject experts in the scoping phase of the review. Experts included researchers, ecological consultants, and non-governmental organisations working in mammal



175 conservation, road ecology, and/or road safety, including Mott MacDonald (consultancy:  
 176 international; <https://www.mottmac.com/>), Rimba (non-governmental organisation: Asia;  
 177 <https://rimba.ngo/>) and National Highways (government-owned company: England;  
 178 <https://nationalhighways.co.uk/>). Following the guidelines proposed by the Collaboration for  
 179 Environmental Evidence (CEE) (Pullin & Stewart, 2006), we performed a systematic  
 180 literature search for studies around the world that documented mammal–vehicle collisions  
 181 and that also provided information relevant to population demography. The CEE guidelines  
 182 were chosen to enable standardised subject-specific identification of evidence to support  
 183 conservation practice and road management. The literature search was conducted in April  
 184 2021, using two electronic databases: *Scopus* and *Web of Science* Core Collection®.  
 185 Importantly, *Web of Science* incorporates several regional databases that allow searches for  
 186 non-English-language literature. The search was created by a thorough scoping of the  
 187 literature and a benchmarking process. The following Boolean search string was used in each  
 188 database: (roadkill OR road-kill OR “road kill”) OR (mortalit\* OR fatalit\* OR strike OR  
 189 collision AND anthropogenic OR vehicle OR road OR highway OR traffic OR motorway OR  
 190 freeway OR expressway) AND (survival OR population OR viability OR threat OR decline  
 191 OR extinction OR extirpation OR depletion OR dispers\* OR movement OR migrat\* OR  
 192 genet\*) AND NOT (vessel OR boat). The search was performed in English, French, Spanish,  
 193 Portuguese, and Brazilian Portuguese (see Table S1), and no country limitations were  
 194 applied. To ensure objective and comprehensive coverage, we included studies published in  
 195 any print outlet as well as multi-taxa studies that may have relevant mammalian demographic  
 196 data amongst that of other taxa. The search was restricted to publications reporting data from  
 197 2000 to 2021, inclusive, to account for the drastic historical increase in global traffic volume  
 198 (Schafer & Victor, 2000). However, traffic volume has continued to increase annually and no

1  
2  
3  
4  
5  
6  
7  
8  
9  
10  
11  
12  
13  
14  
15  
16  
17  
18  
19  
20  
21  
22  
23  
24  
25  
26  
27  
28  
29  
30  
31  
32  
33  
34  
35  
36  
37  
38  
39  
40  
41  
42  
43  
44  
45  
46  
47  
48  
49  
50  
51  
52  
53  
54  
55  
56  
57  
58  
59  
60

comparisons are made between studies based on the relationship between traffic volume and road mortality impacts.

In addition, the first 400 results of an advanced title search using the same search string on the meta-search engine *Google Scholar* were also checked for relevance to increase grey literature returns, particularly in the non-English language literature (Haddaway *et al.*, 2015).

We also searched for papers, conference proceedings and technical reports published on additional online platforms, including conferences such as the International Conference on Ecology and Transportation (ICOET) and from road ecology centres such as the Western Transportation Institute. Thesis repositories of *Ethos* (UK) and *ProQuest* (worldwide) were used to search for relevant theses.

**(2) Screening and inclusion criteria**

All selected studies were subject to a stepwise selection process. Before screening for relevance, all studies were screened for duplicate data sets between sources with the most complete sources selected. Studies were then selected for inclusion using the *a priori* criteria based on consultation with experts shown in Table 1.

We assessed scientific studies for inclusion at three successive levels: first on titles ( $N = 11,238$ ), then abstracts ( $N = 1,025$ ), and finally full texts ( $N = 624$ ). If a study investigated more than one taxon, species or demographic parameter, all mammalian species and parameters were considered and data on each were obtained separately. Table 2 lists the inclusion and exclusion criteria applied at the full-text stage. Kappa analysis was used to verify the level of reviewer agreement on article inclusion at the third screening stage between two reviewers (L.J.M. and R.W.Y.). A random subsample of 10% of the studies was used (Kappa = 0.63, indicating ‘substantial agreement’ *sensu* Landis & Koch, 1977). There was 82% agreement between the two reviewers on the random subsample of studies. As

224 appropriate inter-rater agreement for systematic reviews is regarded to be >80%, sufficient  
225 comparability between reviewers was achieved for this literature search (McHugh, 2012).

226

### 227 **(3) Data extraction, qualitative synthesis, and quantitative analyses**

228 Meta-data, such as species, conservation status, and country, were tabulated for each relevant  
229 research study found. Relevant information relating to the road mortality and demographic  
230 parameters of studied populations was identified and subsequently categorised into direct or  
231 indirect parameters based on established demographic theory and further sub-categorised  
232 (Krebs, 2009). Categories were formulated once the relevant studies meeting the inclusion  
233 criteria for this review had been identified. Study designs were similarly categorised after  
234 identifying the relevant studies. A narrative synthesis was undertaken using tables and figures  
235 that describe the evidence base itself and the findings of individual studies. To standardise  
236 data extraction from the variety of study designs, the proportion of a population killed on  
237 roads was calculated per year for each population for which relevant data were provided. Chi-  
238 squared tests were used to quantify the presence or absence of sex- or age-biases in the  
239 roadkill records relative to the source population.

240

## 241 **III. RESULTS**

### 242 **(1) Overall results from the scientific literature**

243 The search identified 15,298 studies, totalling 11,238 when duplicates were removed. Of  
244 these, 624 were assessed at the full text stage and 83 studies (13.3% of the 624 studies) met  
245 the inclusion criteria and were retained for analyses. The main reason for exclusion of studies  
246 was that they lacked demographic data to accompany the road mortality figures (259 studies).  
247 Details on the search, screening and quality assessment results are summarised in Fig. 1.

Although the literature search was conducted in five languages, all studies meeting the inclusion criteria were in English. During abstract screening, 5.1% ( $N = 52$ ) of studies or, as a minimum their abstracts, were in non-English languages, including French ( $N = 16$ ), Brazilian Portuguese ( $N = 14$ ), Spanish ( $N = 12$ ), German ( $N = 7$ ), Croatian ( $N = 1$ ), Dutch ( $N = 1$ ), and Russian ( $N = 1$ ). In addition, 2.6% ( $N = 16$ ) of full texts screened had the whole text or abstract in Spanish ( $N = 7$ ), Brazilian Portuguese ( $N = 5$ ) or French ( $N = 4$ ). The reasons for the exclusion of these non-English language studies followed the same pattern as the studies in English (Fig. 1). The most common type of document was journal article ( $N = 75$ ), followed by Ph.D. thesis ( $N = 3$ ), technical or government report ( $N = 3$ ), book chapter ( $N = 1$ ), and conference proceeding ( $N = 1$ ). The studies were collated from 22 countries with the majority (57.8%) from North America (Fig. 2).

The studies retained for analysis reported data on 69 mammalian species from 10 taxonomic orders (Fig. 3). Out of the 69 species identified, 54 are categorised as Least Concern, five are Near Threatened, four are Vulnerable and six are Endangered (IUCN, 2021). The review revealed a variable but overall increasing number of publications reporting mammalian road mortality and demography between 2000 and 2021, ranging between one and nine papers published each year.

We categorised nine research methods amongst the identified studies (see Table S2 for identified advantages and disadvantages of these methods). The most common methods were radio-tracking only ( $N = 52$ ) and year-round population monitoring only ( $N = 10$ ). Thirteen studies combined systematic roadkill surveys with another survey method, including (a) a one-time population estimate ( $N = 6$ ), (b) radio-tracking ( $N = 1$ ), (c) population monitoring ( $N = 1$ ), (d) secondary population data (i.e., published population size estimates) ( $N = 3$ ), (e) both radio-tracking and population estimate ( $N = 1$ ). Two population estimates were conducted using genetic fingerprinting from hairs. Studies also combined population

monitoring and radio-tracking ( $N = 3$ ), and utilised simulations ( $N = 6$ ) such as Population Viability Analyses. The average sample size for a radio-tracked population was 93 individuals (range: 2–492). Seven studies used Before–After ( $N = 2$ ) and Control–Impact ( $N = 5$ ) experimental designs but none used a Before–After–Control–Impact (BACI) design. Excluding simulation studies, study duration increased over time and ranged between less than one year to 17 years; four studies (5.2%) were less than one year in length, 52 studies (67.5%) were 1–5 years in length, 17 studies (22.1%) were 6–10 years in length, and four studies (5.2%) were 11–17 years in length. Five direct and three indirect demographic parameters were identified in relation to road mortality (Table 3). Overall, 87.2% of the studies identified reported direct demographic effects of road mortality on the focal populations, whilst 12.8% reported indirect demographic effects of road mortality.

## (2) Description of direct demographic parameters

### (a) Percentage of a population killed on roads per year

Mortality on roads accounted for 0.02 to 50.0% of the local populations per year based on 61 studies, 40 species, and 85 populations. Twenty-six studies reported an annual loss of up to 1% on roads, 38 studies reported a loss of 1.1–5.0% of the population, 14 studies reported a loss of 5.1–10.0%, four studies reported a 10.1–20.0% loss, and the remaining three studies reported a 30.0–50.0% loss of the population. Split by taxon, the percentage of the population killed on roads was greatest for Dasyuromorphia (quolls *Dasyurus* spp., Tasmanian devils *Sarcophilus harrisii*) and lowest for Cetartiodactyla (even-toed ungulates) (Fig. 4A). Intra-specific populations differed in the proportion of the population lost on roads annually. For example, white-tailed deer (*Odocoileus virginianus*) had an 11.5-fold difference in proportional loss across four studies, whilst the annual proportional loss of beech martens

(*Martes foina*) ranged from 1.11 to 33.0% between two studies (Table S3). In one study of six populations of American black bear (*Ursus americanus*) in Florida, USA, annual proportional loss ranged between 0.76 and 11.49% (Simek *et al.*, 2005).

(b) Contribution to total mortality

Between 1.1% and 80.0% of a population's total known mortality was due to roadkill out of 58 studies, 35 species, and 69 populations. Thirty-two studies reported a 1.0–15.0% contribution from road mortality to total mortality, 16 studies reported a 15.1–30.0% contribution, nine studies reported a 30.1–45.0% contribution, six studies reported a 45.1–60.0% contribution, and three studies reported a 60.0–80.0% contribution from WVCs to total known mortality. Split by taxon, the mean contribution of road mortality to total mortality was greatest for Didelphimorphia (opossums) and lowest for Cetartiodactyla (even-toed ungulates) (Fig. 4B). Data on cause-specific mortality was provided for 57 populations. Of these, 28.1% experienced road mortality as the largest contributor to total mortality, with a further 29.8% and 31.5% of populations experiencing road mortality as their second and third largest mortality factor, respectively. Other prevalent causes of mortality were hunting, predation and disease. Intra-specific population differences were evident for several Cetartiodactyla species such as elk (*Cervus canadensis*), mule deer (*Odocoileus hemionus*) and white-tailed deer, and Carnivora such as American black bear and puma (*Puma concolor*). For example, out of four studies, elk populations had a 20-fold difference in the contribution of road mortality to total mortality, whilst the contribution differed between six puma populations by 7.9-fold (Table S3).

(c) Sex-biased road mortality

Many studies that reported the sex ratio of roadkill (16 papers, 15 species, 20 populations) did so on small sample sizes of roadkill and therefore inference power of the results is low (Fraser *et al.*, 2013). Seven populations (35% of studied populations) experienced significantly more female road mortality than would be expected by chance (Fig. 4C; see Table S3 for chi-squared test results). For example, whilst female bobcats (*Lynx rufus*) made up 38% of the radio-collared population, 75% ( $N = 4$  WVC) of the roadkill were females (Serieys *et al.*, 2021). Likewise, common wallaroo (*Osphranter robustus*) females were killed more than expected (observed: 9, expected: 2.4) relative to males (observed: 25, expected: 31.6) (Klöcker, Croft & Ramp, 2006). Conversely, seven populations (35% of studied populations) showed significantly male-biased road mortality, although again with small sample sizes (Fig. 4C; Table S3). For example, whilst 42% of American fishers (*Pekania pennanti*) in a population in California, USA, were male, 100% of the roadkill was male ( $N = 2$  WVC) (Sweitzer *et al.*, 2016). Additionally, six populations (30%) identified in this review did not show any sex bias of the roadkill. Intra-specific population comparisons were possible for three species. Whilst two populations of red kangaroo (*Osphranter rufus*) showed the same lack of bias, two populations of both coyote (*Canis latrans*) and common wallaroo showed differing sex biases in their roadkill records (Table S3).

#### (d) Age-biased road mortality

Many studies that reported the age ratio of roadkill (13 papers, 9 species, 15 populations) did so on small sample sizes of roadkill and therefore inference power of the results is low (Fraser *et al.*, 2013). Eleven populations (73% of studied populations) experienced significantly more adult road mortality than would be expected by chance (Fig. 4D; see Table S3 for chi-squared test results). For example, whilst 54% of an American black bear population was comprised of adults, 100% ( $N = 11$  WVC) of the roadkill was adults (Tri *et*



1  
2  
3  
4  
5  
6  
7  
8  
9  
10  
11  
12  
13  
14  
15  
16  
17  
18  
19  
20  
21  
22  
23  
24  
25  
26  
27  
28  
29  
30  
31  
32  
33  
34  
35  
36  
37  
38  
39  
40  
41  
42  
43  
44  
45  
46  
47  
48  
49  
50  
51  
52  
53  
54  
55  
56  
57  
58  
59  
60

*al.*, 2017). In comparison, coyote was the only species reported where sub-adults in the population were killed more frequently than would be expected by chance (25% of the population comprised of subadults, 100% of the roadkill was subadults,  $N = 2$  WVC) (Stevenson *et al.*, 2016). In three populations (20% of studied populations), adults and juveniles were killed on roads in similar proportions to their populations (Table S3). Intra-specific population comparisons were possible for four species. Whilst two populations of white-tailed deer showed the same adult bias in road mortality, two populations of both coyote and puma showed differing age biases in their roadkill records. Out of five American black bear populations across two studies, four populations showed an adult bias whilst one population showed no bias in the roadkill records.

*(e) Roadkill during inter-patch or long-distance movements*

Seven studies on six species and 14 populations revealed movement parameters that are directly affected by roadkill. Two studies compared the routine movements of resident animals to the exploratory and migratory movements of translocated animals (Frair *et al.*, 2007; Wright *et al.*, 2020). For both elk and mule deer, authors reported that non-resident animals were more commonly killed on roads compared to residents (Frair *et al.*, 2007; Wright *et al.*, 2020). Moreover, three studies reported road mortality of dispersing animals (Kanda, 2005; Fey, Hämäläinen & Selonen, 2016; Carvalho *et al.*, 2018). Dispersal movements were shown to correspond to a heightened road mortality rate for young common genets (*Genetta genetta*) ( $N = 38$  WVC) (Carvalho *et al.*, 2018). Two of the three dispersing rural female Virginia opossums (*Didelphis virginiana*) were killed on roads during dispersal movements (Kanda, 2005). Again, caution is recommended in interpreting these results because of the low inference power derived from small sample sizes. High road mortality of dispersing animals was not universally reported. One (3.2%) of the 32 tracked juvenile red



squirrels (*Sciurus vulgaris*) died during dispersal movements in Finland, although three other dispersing individuals disappeared and traffic mortality remains a possible cause (Fey *et al.*, 2016). Migration was discussed in one paper: four (1.1%) out of 359 mule deer were killed in WVCs during migration in south-central Oregon, USA (Coe *et al.*, 2015).

376

### (3) Description of indirect demographic parameters

#### (a) Population growth rates

Population growth rates were examined and reported in seven studies on 20 species and 22 populations. Chambers & Bencini (2010) examined population growth rates for three tammar wallaby (*Notamacropus eugenii*) populations. Road mortality reduced the population growth rate between 2005 and 2007 by 1–6% for a population in the relatively undisturbed southern bushland and 8–16% for populations in a highly developed neighbouring site. Desbiez, Bertassoni & Traylor-Holzer (2020) used empirical roadkill data for a Population Viability Analysis in Brazil and showed that the road mortality of giant anteaters (*Myrmecophaga tridactyla*) decreased the stochastic growth rate of that population by half. While population growth rates remained over 2% per year, the population's ability to withstand and recover from other anthropogenic threats such as fire and disease outbreaks was considered to be lower. Three studies collected empirical data on both road mortality rates and population growth for 16 populations, including Northern bushbuck (*Tragelaphus scriptus*), oribi (*Ourebia ourebi*), common hippopotamus (*Hippopotamus amphibius*) and common warthog (*Phacochoerus africanus*) (Belant, 2007; Ruiz-Capillas *et al.*, 2015; Nyirenda, Namukonde & Fushike, 2017). The road mortality rates of each of the 16 populations appeared sustainable and the population sizes continued to grow over several years. For example, an American marten (*Martes americana*) population experienced 12.5% of its mortality from vehicle

396 collisions, yet the population size continued to increase at a rate of 16% per year over three  
397 years (Belant, 2007).

#### 399 *(b) Population persistence*

400 Population persistence was reported in five studies on three species and 22 populations.  
401 Desbiez *et al.* (2020) reported that a loss of 18% of the adult giant anteater population due to  
402 road mortality in the Brazilian Cerrado resulted in a 47% probability of extinction in 100  
403 years, compared to no extinction risk over 100 years of a baseline population under no  
404 significant threats. Desbiez *et al.* (2020) also reported a difference in effects based on sex-  
405 biased road mortality, whereby female-only roadkill produced a 46% probability of  
406 extinction in 100 years, compared to a 0.1% chance from male-only roadkill. Diniz & Brito  
407 (2013) calculated that if 15% of a giant anteater population in Parque Nacional Brasília,  
408 Brazil, were killed on roads, the population would reduce in size by 78% (180 to 40  
409 individuals) in 5–6 years, followed by local extinction in <8 years. Finally, [Roger, Laffan &](#)  
410 [Ramp \(2011\)](#) conducted a sensitivity analysis for common wombats (*Vombatus ursinus*) in  
411 New South Wales, Australia. Populations with 40% annual road fatality (26.7 individuals  $\pm$   
412 13.8 sd.) presented high probability (50%) of decline, even for the largest initial abundance  
413 and carrying capacity values.

#### 415 *(c) Genetic diversity*

416 Genetic diversity was examined in two studies, each examining a different giant anteater  
417 population in Brazil and showing similar results. Diniz & Brito (2013) examined the  
418 heterozygosity of giant anteaters in Parque Nacional Brasília in several roadkill scenarios.  
419 The simulations showed that with 25 individuals killed per year (15% of the population),  
420 most of the original genetic diversity within the population was maintained. For a giant

anteater population in the Brazilian Cerrado, Desbiez *et al.* (2020) showed that the population at year 100 had 95% genetic diversity remaining under the present road mortality scenario. However, genetic diversity was more severely reduced in simulated populations experiencing road mortality of both sexes (heterozygosity = 0.798), followed by female-only mortality (heterozygosity = 0.835), compared to male-only mortality (heterozygosity = 0.948) (Desbiez *et al.*, 2020).

#### IV. DISCUSSION

Gathering mammalian demography data is notoriously difficult (Stenglein *et al.*, 2015). During the stepwise selection process, 305 studies were removed because of a lack of demographic data accompanying roadkill counts or the use of unsystematic study design, leading to an incomplete or unreliable data set for population-level assessments. Therefore, despite intensive global research over the past 20 years, many critical questions about long-term impacts of road mortality remain unanswered. We explicitly searched for and retained studies reporting road mortality impacts on demographic parameters for this review because we intended to synthesise data on how road mortality affects populations and not the extent of road mortality worldwide. As such, this review draws no conclusions about the number of populations free from the risk of WVCs, although previous studies have indicated that most terrestrial populations are vulnerable to vehicle collisions (Barrientos *et al.*, 2021; Hill *et al.*, 2019). It must be emphasised that several studies identified in this review are based on small roadkill sample sizes. This may be a function of the relatively short duration of many studies and the difficulty in identifying sex from decomposed or damaged carcasses. Therefore, it is unclear how well these results represent the wider population. Despite our systematic literature search being conducted in five languages and studies included from 22 countries, studies that met the inclusion criteria were only in English. This

could be a result of a publication bias towards research-intensive and developed countries that have a greater prevalence of English speakers (Nuñez & Amano, 2021), and/or that non-English studies often have less-robust study designs than the English literature (Amano *et al.*, 2021). Consequently, the latter may result in English-language studies being published in higher-impact journals that stipulate articles to be written in English, which also have more thorough indexing procedures for well-known literature search systems compared to non-English journals (Amano *et al.*, 2021).

**(1) Direct demographic parameters**

*(a) Depletion effects*

Many studies identified in this review revealed that road mortality can remove a large number of animals from the population compared to population size or other mortality factors (e.g. Grueber *et al.*, 2017; Seiler, 2003; Lehrer, Schooley & Whittington, 2012; McCleery *et al.*, 2008). In particular, road mortality was the greatest source of mortality for approximately one-third of populations for which data were provided ( $N = 16$  out of 57 populations). Twelve of these populations were surrounded by urbanisation or anthropogenic development, as opposed to natural forests, savannahs, and National Park for example. This highlights the well-cited link between urbanisation and additional anthropogenic mortality (McCleery *et al.*, 2008; Tri *et al.*, 2017; Wright *et al.*, 2020). Large individual losses on roads can directly reduce the effective population size and/or increase mortality rates above recruitment rates, therefore making populations vulnerable to environmental and demographic stochasticity, as shown for many species (Carvalho & Mira, 2011; Roger *et al.*, 2011). The way in which high roadkill rates shape population persistence is likely to be nuanced, possibly explaining the variation in road mortality impacts on intra-species populations identified in this review. The impacts likely depend on the suitability of the surrounding

environment and associated background demographic parameters such as population growth and the potential for compensating mechanisms (Seiler, 2003) (see Sections III.3 and III.4). Crucially, the relative importance of road mortality is likely to be context specific as the road configuration and habitat quality surrounding a population can vary, for example between core and edge habitats or along the urban–rural gradient (Lehrer *et al.*, 2012). These in turn affect population dynamics, including population densities which are a key factor in determining the level of road mortality that a population can sustain (Wright *et al.*, 2020). For some populations, roadkill can have a small effect on the persistence of the population (Cypher, Bjurlin & Nelson, 2009; Sidorovich, Novitsky & Solovej, 2020). It is thought that species with fast life histories experiencing high fecundity, large population densities and rapid population growth are more able to replace lost individuals quickly (Rytwinski & Fahrig, 2015). Fifteen populations identified in this review continued to show stable or increased growth rates over three or more years despite relatively high road mortality. Many of the identified species meet some or all elements of fast life histories, such as American martens and 13 ungulate species (Belant, 2007; Ruiz-Capillas *et al.*, 2015; Nyirenda *et al.*, 2017). A knowledge gap remains for small mammals, such as mice, voles and bats, however. This is because low carcass detectability and persistence preclude accurate roadkill rate estimates and therefore conclusions about the extent that roadkill depletes these populations. Of note, 14 of the 15 populations shown to have stable or increased growth rates despite road mortality inhabited National Parks. This suggests that high-quality, protected environments can contribute to the resilience of populations to anthropogenic threats such as roads (Nyirenda *et al.*, 2017; Pereira *et al.*, 2010).

493

494 *(b) Sex- and age-biased road mortality*

1  
2  
3  
4  
5  
6  
7  
8  
9  
10  
11  
12  
13  
14  
15  
16  
17  
18  
19  
20  
21  
22  
23  
24  
25  
26  
27  
28  
29  
30  
31  
32  
33  
34  
35  
36  
37  
38  
39  
40  
41  
42  
43  
44  
45  
46  
47  
48  
49  
50  
51  
52  
53  
54  
55  
56  
57  
58  
59  
60

495 It is noteworthy that road mortality appeared to be adult-biased in 10 out of 15 studies that  
496 provided relevant data, which is likely a consequence of the greater roaming behaviour of  
497 adults to find mates and food. Mammalian age-specific survival is typically characterised by  
498 low rates in young animals and high rates in adults (Arso Civil *et al.*, 2019). Changes in adult  
499 survival can have the greatest effect on population trajectories, particularly for species where  
500 adult lifespans are long relative to the time taken to reach maturity (Chambers, 2009).  
501 Therefore, adult-biased road mortality is a pertinent concern as it reduces effective population  
502 sizes and reproduction rates. However, whether adults and juveniles have different detection  
503 probability (e.g. because of the smaller size of juveniles), which may bias estimates of  
504 population structure and therefore any inference from the data, remains unknown.  
505 As sex structure and mortality are central to population stability, a sex bias in road mortality  
506 can be used in projections of longer-term impacts (Klöcker *et al.*, 2006). A relatively even  
507 spread of male, female and no bias to roadkill was found amongst the retained studies,  
508 although the number of studies identified was small. A lack of sex bias in road mortality is  
509 unlikely to affect a population's persistence beyond the general depletion of individuals as  
510 the population structure is likely to remain unchanged. There is a strong narrative in the  
511 literature that males are more vulnerable to roadkill than females (Green-Barber & Old, 2019;  
512 Miotto *et al.*, 2012). However, whilst males are often killed on roads more frequently than  
513 females, this review shows that males are not necessarily killed more than would be expected  
514 based on their numbers in the population. Variations in sex-specific survival rates moderate  
515 population dynamics and the severity of these impacts is likely to depend on the species'  
516 social structure and mating systems. Female survival typically exerts a greater effect on  
517 population trends than male survival. Low, but consistent, female road mortality may cause a  
518 male-skewed population, as similarly shown for reptiles (Mitro, 2011); males become mate

1  
2  
3 519 limited and female fecundity is reduced, generating Allee effects and increasing population  
4  
5  
6 520 extinction risk (Simmons *et al.*, 2010).  
7  
8 521 For species that live in family groups, female road mortality has been shown to exert indirect,  
9  
10 522 sublethal effects on the recruitment of populations. The death of a mother by vehicle  
11  
12 523 collisions can lead to the death of dependent juveniles, either by starvation (Snow *et al.*,  
13  
14 524 2012) or infanticide (Logan & Runge, 2021). Vehicle collisions of male or females were  
15  
16  
17 525 responsible for 2.1% of bond dissolution within a grey wolf (*Canis lupus*) population in  
18  
19 526 Scandinavia, which can destabilise social structure and reduce population growth (Milleret *et*  
20  
21 527 *al.*, 2017). For solitary and territorial species, the impact of male- or female-biased road  
22  
23 528 mortality may be dependent on territory ownership and whether other reproductively viable  
24  
25  
26 529 individuals are able to fill the vacant breeding territories (Riley *et al.*, 2006; Mumme *et al.*,  
27  
28 530 2000). Overall, studies identified in this review agreed that adult-biased, and specifically  
29  
30 531 female-biased, road mortality are likely to be critical to population dynamics.  
31  
32

532

### 533 (c) Roadkill during inter-patch or long-distance movements

37 534 Three out of the four studies reporting information on the road mortality of dispersing  
38  
39 535 animals reported relatively high roadkill rates (Kanda, 2005; Carvalho *et al.*, 2018; Pereira *et*  
40  
41 536 *al.*, 2010). Risk of road mortality during dispersal or extraterritorial excursions has also been  
42  
43  
44 537 shown for some birds (Mumme *et al.*, 2000; Bujoczek, Ciach & Yosef, 2011) and reptiles  
45  
46  
47 538 (Bonnet, Naulleau & Shine, 1999). A suite of Geographical Positioning System (GPS)/radio-  
48  
49 539 tracking data indicate that the risk could be a function of a greater road crossing frequency  
50  
51 540 during dispersal than during exploratory or routine movements (Grilo *et al.*, 2012; Fey *et al.*,  
52  
53 541 2016). When road mortality of dispersing animals is high, patch connectivity is limited and  
54  
55 542 gene flow is restricted (Jackson & Fahrig, 2011; Balkenhol & Waits, 2009). In extreme cases,  
56  
57  
58 543 high road mortality for populations in patchy habitat networks may lead to source–sink  
59  
60



1  
2  
3  
4  
5  
6  
7  
8  
9  
10  
11  
12  
13  
14  
15  
16  
17  
18  
19  
20  
21  
22  
23  
24  
25  
26  
27  
28  
29  
30  
31  
32  
33  
34  
35  
36  
37  
38  
39  
40  
41  
42  
43  
44  
45  
46  
47  
48  
49  
50  
51  
52  
53  
54  
55  
56  
57  
58  
59  
60

dynamics, as speculated by Grilo *et al.* (2012) for a roadside population of beech martens in Portugal. Collevatti *et al.* (2007) also suggest that the high inbreeding within a giant anteater population in Emas National Park in Brazil may be, at least in part, a result of extensive roadkill between the park and nearby Cerrado fragments, hence decreasing migration and gene flow. Therefore, it remains possible that road mortality may be influencing the dynamics of subpopulations far from roads. However, a high mortality of dispersers does not necessarily lead to subdivision (Carvalho *et al.*, 2018), suggesting that in some cases, even a small number of successful dispersers can ensure sufficient gene flow and prevent the development of spatial genetic structuring.

**(2) Indirect demographic parameters**

Several authors highlighted the vulnerability of population growth rates of some, but not all, populations to road mortality in the short term. Changes to growth rates, and hence population persistence, as a result of roadkill may be mediated by lower effective population sizes and/or altered mortality:recruitment ratio. Population persistence may be particularly threatened by roadkill if the (sub)population exhibits site fidelity and/or lives in patchy habitat that may decrease immigration due to increasing patch isolation (Snow *et al.*, 2012). It is possible that under certain conditions, such as areas extensively and/or rapidly modified by humans, individuals select roadside habitats for favourable resource availability. In turn, these populations are subject to ecological trap dynamics following lower survival in roadside habitats (Battin, 2004). These dynamics can shape population structure and sustainability and have previously been reported for Eurasian lynx (*Lynx lynx*) (Basille *et al.*, 2013) and several bird species including mourning wheatears (*Oenanthe lugens*) (Ben-Aharon, Kapota & Saltz, 2020) and Florida scrub jays (*Aphelocoma coerulescens*) (Mumme *et al.*, 2000).



1  
2  
3 569 Road mortality may not directly cause local extinctions for all impacted populations,  
4  
5  
6 570 especially if the species-specific habitat quality is high and so populations are relatively  
7  
8 571 resilient to environmental stressors. However, collisions can make populations more  
9  
10 572 vulnerable to environmental and demographic stochasticity, as shown for common wombats  
11  
12 573 (Roger *et al.*, 2011) and giant anteaters (Desbiez *et al.*, 2020). Most animal populations are  
13  
14 574 subject to multiple stressors that operate at various spatial and temporal scales and interact to  
15  
16  
17 575 some degree, either additively or synergistically (Doherty *et al.*, 2015). For example, Roger  
18  
19 576 *et al.* (2011) showed that intermediate levels of roadkill of common wombat individuals in  
20  
21 577 the Kosciuszko National Park in New South Wales, Australia, caused the population to be  
22  
23 578 more sensitive to variation in juvenile survival and even low roadkill levels increased their  
24  
25  
26 579 vulnerability to fires. For species with slow breeding rates, as is the case for common  
27  
28 580 wombats, populations are less able to offset high mortality rates attributed to roads or other  
29  
30 581 threats. In turn, immigration from the surrounding area will be important for the persistence  
31  
32 582 of these roadside populations (Rytwinski & Fahrig, 2015).  
33  
34  
35 583 It is possible that road mortality can indirectly impact populations that are otherwise resilient  
36  
37 584 to WVCs by causing the loss of ecologically functional species, such as apex predators.  
38  
39 585 Trophic cascades and changes to interspecific associations are a well-known result from the  
40  
41 586 decline of key species (Fischer *et al.*, 2012). Road mortality that causes the local extinction of  
42  
43 587 key predator species may incite a mesocarnivore influx, changing ecosystem structure and the  
44  
45 588 vital rates of populations in the wider ecological community (as reported for other mortality  
46  
47 589 causes; Hollings *et al.*, 2014).  
48  
49  
50  
51  
52 590

### 53 591 **(3) Compensatory and additive mechanisms of road mortality**

54  
55  
56 592 The demographic impacts of road mortality were shown to be highly variable amongst the  
57  
58 593 study species and intra-specific populations identified in this review. This may be a function  
59  
60

1  
2  
3  
4  
5  
6  
7  
8  
9  
10  
11  
12  
13  
14  
15  
16  
17  
18  
19  
20  
21  
22  
23  
24  
25  
26  
27  
28  
29  
30  
31  
32  
33  
34  
35  
36  
37  
38  
39  
40  
41  
42  
43  
44  
45  
46  
47  
48  
49  
50  
51  
52  
53  
54  
55  
56  
57  
58  
59  
60

594 of the small roadkill sample sizes of several studies retained by the search, which makes the  
595 results inherently inconsistent. The variable results also demonstrate that the interplay of  
596 roadkill with other context-specific factors, and how that affects the mortality:recruitment  
597 ratio, will influence the capacity for populations to persist despite road mortality (Roger *et*  
598 *al.*, 2011). Extrinsic and intrinsic factors can affect whether road mortality is additive to  
599 natural mortality, resulting in a net reduction in total survival rates, or is compensated for by  
600 a reduction in natural mortality and/or increased reproductive rates (Sparkman, Waits &  
601 Murray, 2011). Studies identified in this review report both additive and compensatory  
602 mechanisms of road mortality. For example, Burroughs *et al.* (2006), Tri *et al.* (2017) and  
603 Logan & Runge (2021) found that white-tailed deer, pumas and American black bears had a  
604 greater level of road mortality in conditions with lower mortality from other anthropogenic  
605 causes (e.g. harvesting, humane lethal control). However, Chambers & Bencini (2010) found  
606 both compensatory and additive mechanisms for the road mortality of tammar wallaby  
607 populations in Australia, suggesting that road mortality impacts depend on other factors that  
608 also affect vital rates. Additive road mortality has also been reported in red wolves (*Canis*  
609 *rufus*) (Sparkman *et al.*, 2011) and, in addition to mammals, in several bird species (Bujoczek  
610 *et al.*, 2011), spotted salamander (*Ambystoma maculatum*) (Gibbs & Shriver, 2005) and  
611 turtles (Congdon, Dunham & van Loben Sels, 1994). It is likely that, in many cases, road  
612 mortality is neither completely additive nor compensatory. This is because road mortality is,  
613 to some extent, influenced by density-dependent mechanisms and its consequences on  
614 population dynamics can also depend on which individuals are killed on roads and when  
615 (Desbiez *et al.*, 2020). This is corroborated by Lehnert, Bissonette & Haefner (1998) who  
616 demonstrated that for a mule deer population in the USA, 50% of all animals killed on the  
617 highway would have died from non-road causes before the next breeding season.  
618 Nevertheless, mechanisms underlying either compensatory or additive effects of road

619 mortality remain poorly understood and warrant further investigation to improve the accuracy  
620 of road mortality assessments.

621 Of great concern is that rare and threatened species often have (sometimes naturally) small  
622 population sizes and/or a population growth rate that is close to zero or negative ([Desbiez et](#)  
623 [al. \(2020\)](#)). As such, even a low but uncompensated road mortality rate can remove a  
624 significant percentage of the population, thereby constraining annual survival and inducing or  
625 exacerbating population decline (Sparkman *et al.*, 2011). This has important implications for  
626 conservation because when road mortality is additive, mitigation efforts around roads are a  
627 more pressing requirement than if compensatory mortality is assumed.

#### 629 **(4) Considerations for road ecology study design**

630 It can be argued that population growth is a fundamental parameter of interest in studies of  
631 anthropogenic mortality and quantifying it should be prioritised. Although population size  
632 and raw roadkill counts are useful, they are a stationary snapshot and unlike population  
633 growth, they do not consider the impact of demographic variability and its role in any  
634 compensatory processes (Seiler, 2003).

635 The methods used and sample sizes collected can drastically alter the conclusions of road  
636 mortality impacts. There are typically three methods to obtain roadkill data: (1) systematic  
637 road surveys; (2) radio-tracking (and associated telemetry technologies such as GPS and  
638 satellite tracking) or constant population monitoring; and (3) opportunistic records (often *via*  
639 unstructured citizen science) (see Table S2). Radio-tracking tailored to the focal species  
640 provide a less-biased sample because most road mortalities are usually detected. Roadkill  
641 surveys, whether systematic or not, are more targeted and can detect a large proportion, but  
642 rarely all, of the roadkill present. However, ~~searcher~~ [efficiency of the surveys](#) and carcass  
643 detectability can be low depending on survey frequency and carcass size. Non-systematic

surveys such as from citizen science participants have additional issues of bias across the survey area depending on the geographic spread of surveyor effort. Moreover, opportunistic records such as *ad hoc* observations from park wardens or tourists could bias the significance of mortality factors because death events are detected differently (Pereira *et al.*, 2010). However, data from radio-tracking can often only be based on a small sample of individuals. Such studies might not be free of bias nor be representative of the wider population depending on the method used for capture (Stenglein *et al.*, 2015), meaning mortality data should also be interpreted cautiously. For example, Pereira *et al.* (2010) reported that 18% (seven individuals) of a Geoffroy's cat (*Leopardus geoffroyi*) population in central Argentina was killed on roads when using opportunistic sampling and ranger interviews to record carcasses, yet only 5% (one individual) of a radio-tracked subset of the same population was killed on roads.

#### (a) Improving study design

Replicated, manipulative study designs such as BACI are considered the highest standard of study design in road ecology (Rytwinski & Fahrig, 2015). These studies can be used to detect demographic changes, particularly at the genetic level, and to separate confounding factors (Fig. 5). Of the 83 studies included in this review, seven studies used experimental designs – two studies used Before–After and five used Control–Impact, often comparing urban or high-density road networks to rural or low-density areas. Collecting sufficiently long-term data both pre- and post-road construction, as per BACI protocol, is usually difficult to achieve because many roads have already been built or their construction is imminent at the research conception stage. The majority (72.7%) of studies identified in this review were less than 5 years in duration. The length of a study on road mortality should be species appropriate and cover more than one generation. Longer-term studies can overcome the challenges of small

roadkill sample sizes and of quantifying population demographics and their variability, particularly for long-lived species and when combined with individual-based methods such as marking individuals (Desbiez *et al.*, 2020). The large costs associated with long-term, manipulative studies can be shared with collaborative research action (see below) (Fraser *et al.*, 2013).

Genetic studies are a critical component of examining the long-term viability of roadside populations. However, neither of the two retained studies that reported the effects of road mortality on genetic diversity used empirical genetic data (Diniz & Brito, 2013; Desbiez *et al.*, 2020). The development of genotypic approaches (analyses based on genotypes of individuals) and high-resolution molecular markers (e.g. single nucleotide polymorphisms) offer powerful methods to examine fitness-related genetic effects, such as population genetic structure, fragmentation, and diversity (Balkenhol & Waits, 2009; Simmons *et al.*, 2010; Jackson & Fahrig, 2011). For example, genotypic approaches such as genetic pedigree, spatial-autocorrelation and parentage analysis can identify important within-population processes, including demographic history and sex-biased dispersal (e.g. across roads) (Balkenhol & Waits, 2009). Such approaches can be informative at fine spatial and temporal scales, can be readily scaled up, are complementary to the other field-based approaches and are becoming less expensive over time (Corlett, 2017). Moreover, advances in laboratory protocols, such as Polymerase Chain Reaction (PCR) from tissues of road-killed animals, can improve sex identification of badly decomposed or damaged roadkills, or roadkills of monomorphic species (Barragán-Ruiz *et al.*, 2021).

Population viability can depend on the extent and nature of dispersal and immigration between road and non-road habitats (Mumme *et al.*, 2000). Therefore, studies that combine radio-tracking data, or radio-frequency identification (RFID) tags and related transponders (Testud *et al.*, 2019), with roadkill data can incorporate explicit assumptions about successful

1  
2  
3  
4  
5  
6  
7  
8  
9  
10  
11  
12  
13  
14  
15  
16  
17  
18  
19  
20  
21  
22  
23  
24  
25  
26  
27  
28  
29  
30  
31  
32  
33  
34  
35  
36  
37  
38  
39  
40  
41  
42  
43  
44  
45  
46  
47  
48  
49  
50  
51  
52  
53  
54  
55  
56  
57  
58  
59  
60

694 and unsuccessful road crossings (Fahrig & Rytwinski, 2009; Riley *et al.*, 2006). Ultimately, a  
695 blend of genetic and field-based approaches with appropriate statistical modelling, as shown  
696 by Carvalho *et al.* (2018), is needed to assemble the suite of relevant data for accurate road  
697 mortality assessments (Fig. 5). Importantly, cost analyses should be integrated into study  
698 planning to enable efficient resource allocation for research, and likewise for any subsequent  
699 mitigation, in turn improving returns for investment (White *et al.*, 2022). Sharing the  
700 monetary costs associated with robust study design will likely require collaborative  
701 experimental research at an international scale. Collaborations can pool resources more  
702 easily, including expertise, money, and equipment, across several road networks,  
703 simultaneously improving the quality of study design and sample sizes (Fraser *et al.*, 2013;  
704 Rytwinski & Fahrig, 2015).

705  
**(5) Future research directions**

707 Despite the increasing interest and research focus over recent decades, more detailed road  
708 mortality studies are needed to ensure a robust understanding of demographic impacts on  
709 mammalian populations and that efforts to reduce such impacts are focussed on the most at-  
710 risk populations. The interaction between road mortality and movement behaviours, such as  
711 dispersal and migration, remains relatively under-studied. Future research should investigate  
712 the replacement rate following the death of a breeder in areas intersected by roads and the  
713 success rate of dispersing individuals across roads. Appropriate context will be essential in  
714 interpreting these results, considering that road crossings by dispersing subadults do not  
715 necessarily translate into gene flow (Riley *et al.*, 2006). How often road mortality contributes  
716 to the reduction in genetic integrity and the shape of that decline over time (e.g. linear,  
717 exponential) should also receive research attention. To understand a population's capabilities

718 to sustain ongoing road mortality, investigations into whether road mortality is compensated  
719 for, even partially, by increased survival, reproduction or migration should be prioritised.

720

## 721 V. CONCLUSIONS

722 (1) The conservation of wildlife populations impacted by roads has gained recognition as an  
723 issue of worldwide concern. We found that studies collecting data on the demographic effects  
724 of road mortality are relatively rare, but some generalities emerge from the existing literature.  
725 The 83 retained studies from the systematic search demonstrate that road mortality can place  
726 substantial pressure on population size and/or background mortality rates. Female-biased  
727 road mortality appears more frequent than previously recognised in the literature and is likely  
728 to be a critical element in negative population trajectories. Due to a common occurrence of  
729 adult-biased road mortality, wildlife–vehicle collisions (WVCs) place a heavy toll on species  
730 that naturally experience high adult survival.

731 (2) It is evident that the demographic effects of road mortality are not limited to the  
732 immediate location or time period of the WVCs. Long-term (meta-)population dynamics and  
733 populations far from roads may be affected by lower survival and unsuccessful dispersal  
734 inciting source–sink dynamics. However, some populations can tolerate additional mortality  
735 and maintain population growth over several years, most likely a result of high reproductive  
736 rates.

737 (3) Understanding how road mortality shapes the structure and sustainability of wildlife  
738 populations is challenged by the complexity of underlying processes. Road mortality interacts  
739 with demographic and environmental variability in populations, causing context-specific  
740 responses to road mortality.

741 (4) This review stresses that conservation strategies that seek to address the impact of roads  
742 must collect data on relevant demographic parameters, such as population growth and



1  
2  
3  
4  
5  
6  
7  
8  
9  
10  
11  
12  
13  
14  
15  
16  
17  
18  
19  
20  
21  
22  
23  
24  
25  
26  
27  
28  
29  
30  
31  
32  
33  
34  
35  
36  
37  
38  
39  
40  
41  
42  
43  
44  
45  
46  
47  
48  
49  
50  
51  
52  
53  
54  
55  
56  
57  
58  
59  
60

743 survival rates, as well as an assessment of concurrent threats to the target population(s).  
744 Studies that use rigorous study design, ideally with a combination of methods and/or using an  
745 experimental design, will hold the greatest inferential strength for assessing population-level  
746 impacts of WVCs. Examining the link between road mortality and movement behaviours, as  
747 well as additive or compensating mechanisms to road mortality, should be research priorities  
748 for more accurate insight into long-term consequences.

(5) The knowledge gathered from this review is a step towards sustainable road development  
and maintenance amidst growing road networks, particularly in megadiverse and developing  
countries that hold some of the world’s most threatened species and last remaining wilderness  
areas. Moving forward, quantifying the demographic impacts of road mortality should  
become an established process within comprehensive road mortality assessments and the  
planning of impact mitigation to enable proactive conservation action of populations at risk.

**VI. ACKNOWLEDGEMENTS**

We would like to thank the external subject experts for their helpful consultation and  
discussion that shaped this review. In addition, we would like to thank the anonymous  
reviewers for their insightful comments. L.J.M. received funding from the People’s Trust for  
Endangered Species and Nottingham Trent University. The authors declare no conflict of  
interest. The funders had no role in the conceptualisation or writing of the manuscript.

**VII. REFERENCES**

References identified with an asterisk (\*) are cited only within the supporting information.

AMANO, T., BERDEJO-ESPINOLA, V., CHRISTIE, A.P., WILLOTT, K., AKASAKA, M.,  
*ET AL.* (2021). Tapping into non-English-language science for the conservation of global  
biodiversity. *PLOS Biology* **19** (10), e3001296.



- 768 \*ANDREASEN, A.M., STEWART, K.M., SEDINGER, J.S., LACKEY, C.W. &  
 769 BECKMANN, J.P. (2018). Survival of cougars caught in non-target foothold traps and  
 770 snares; survival of cougars caught in non-target foothold traps and snares. *The Journal of*  
 771 *Wildlife Management* **82** (5), 906–917.
- 772 ARESCO, M.J. (2005). The effect of sex-specific terrestrial movements and roads on the sex  
 773 ratio of freshwater turtles. *Biological Conservation* **123** (1), 37–44.
- 774 \*ARLET, M.E., BALASUBRAMANIAM, K.N., SAHA, R., BEISNER, B., MARTY, P.R.,  
 775 KABURU, S.S.K., BLISS-MOREAU, E., KAASIK, A., KODANDARAMAIAH, U. &  
 776 MCCOWAN, B. (2021). Infant survival among free-living bonnet macaques (*Macaca*  
 777 *radiata*) in South India. *International Journal of Primatology* **42** (2), 220–236.
- 778 ARSO CIVIL, M., CHENEY, B., QUICK, N.J., ISLAS-VILLANUEVA, V., GRAVES, J.A., JANIK,  
 779 V.M., THOMPSON, P.M. & HAMMOND, P.S. (2019). Variations in age- and sex-specific  
 780 survival rates help explain population trend in a discrete marine mammal population. *Ecology*  
 781 *and Evolution* **9** (1), 533–544.
- 782 \*BAJWA, P. & CHAUHAN, N.S. (2019). Impact of agrarian land use and land cover practices  
 783 on survival and conservation of nilgai antelope (*Boselaphus tragocamelus*) in and around the  
 784 Abohar wildlife sanctuary, northwestern India. *Ecoscience* **26** (3), 279–289.
- 785 \*BALČIAUSKAS, L. (2012). The influence of roadkill on protected species and other  
 786 wildlife in Lithuania. In: *2011 International Conference on Ecology and Transportation*  
 787 *(ICOET 2011)*. North Carolina State University, Raleigh.
- 788 \*BALČIAUSKAS, L., STRATFORD, J., BALČIAUSKIENĖ, L. & KUČAS, A. (2020).  
 789 Importance of professional roadkill data in assessing diversity of mammal roadkills.  
 790 *Transportation Research Part D: Transport and Environment* **87**, 102493.
- 791 BALKENHOL, N. & WAITS, L.P. (2009). Molecular road ecology: Exploring the potential  
 792 of genetics for investigating transportation impacts on wildlife. *Molecular Ecology* **18** (20),  
 793 4151–4164.
- 794 BARRAGÁN-RUIZ, C.E., PAVIOTTI-FISCHER, E., RODRÍGUEZ-CASTRO, K.G.,  
 795 DESBIEZ, A.L.J. & GALETTI, P.M. (2021). Molecular sexing of Xenarthra: a tool for  
 796 genetic and ecological studies. *Conservation Genetics Resources* **13** (1), 41–45.
- 797 BARRIENTOS, R., ASCENSÃO, F., D'AMICO, M., GRILO, C. & PEREIRA, H.M. (2021).  
 798 The lost road: Do transportation networks imperil wildlife population persistence?  
 799 *Perspectives in Ecology and Conservation* **19** (4), 411–416.

- 800 BASILLE, M., VAN MOORTER, B., HERFINDAL, I., MARTIN, J., LINNELL, J.D.C.,  
801 ODDEN, J., ANDERSEN, R. & GAILLARD, J.M. (2013). Selecting habitat to survive: the  
802 impact of road density on survival in a large carnivore. *PLOS ONE* **8** (7), e65493.
- 803 BATTIN, J. (2004). When good animals love bad habitats: Ecological traps and the  
804 conservation of animal populations. *Conservation Biology* **18** (6), 1482–1491.
- 805 \*BEARMAN-BROWN, L.E., BAKER, P.J., SCOTT, D., UZAL, A., EVANS, L. &  
806 YARNELL, R.W. (2020). Over-winter survival and nest site selection of the west-European  
807 hedgehog (*Erinaceus europaeus*) in arable dominated landscapes. *Animals* **10**, 1449.
- 808 BELANT, J.L. (2007). Human-caused mortality and population trends of American marten  
809 and fisher in a U.S. national park. *Natural Areas Journal* **27** (2), 155–160.
- 810 BEN-AHARON, N., KAPOTA, D. & SALTZ, D. (2020). Roads and road-posts as an  
811 ecological trap for cavity nesting desert birds. *Frontiers in Conservation Science* **1**, 614899.
- 812 \*BENSON, J.F., PATTERSON, B.R. & MAHONEY, P.J. (2014). A protected area influences  
813 genotype-specific survival and the structure of a *Canis* hybrid zone. *Ecology* **95** (2), 254–264.
- 814 \*BENSON, J.F., SIKICH, J.A. & RILEY, S.P.D. (2020). Survival and competing mortality  
815 risks of mountain lions in a major metropolitan area. *Biological Conservation* **241**, 108294.
- 816 BONNET, X., NAULLEAU, G. & SHINE, R. (1999). The dangers of leaving home:  
817 Dispersal and mortality in snakes. *Biological Conservation* **89** (1), 39–50.
- 818 BORDA-DE-ÁGUA, L., GRILO, C. & PEREIRA, H.M. (2014). Modeling the impact of  
819 road mortality on barn owl (*Tyto alba*) populations using age-structured models. *Ecological  
820 Modelling* **276**, 29–37.
- 821 \*BRINKMAN, T.J., JENKS, J.A., DEPERNO, C.S., HAROLDSON, B.S. & OSBORN, R.G.  
822 (2004). Survival of white-tailed deer in an intensively farmed region of Minnesota. *Wildlife  
823 Society Bulletin* **32** (3), 726–731.
- 824 BUJOCZEK, M., CIACH, M. & YOSEF, R. (2011). Road-kills affect avian population  
825 quality. *Biological Conservation* **144** (3), 1036–1039.
- 826 BURGMAN, M. & POSSINGHAM, H. (2010). Population viability analysis for  
827 conservation: the good, the bad and the undescribed. In *Genetics, Demography and Viability  
828 of Fragmented Populations* pp. 97–112. Cambridge University Press.
- 829 BURROUGHS, J.P., CAMPA, H., WINTERSTEIN, S.R., RUDOLPH, B.A. & MORITZ,  
830 W.E. (2006). Cause-specific mortality and survival of white-tailed deer fawns in  
831 southwestern lower Michigan. *Journal of Wildlife Management* **70** (3), 743–751.

- 832 CARVALHO, F. & MIRA, A. (2011). Comparing annual vertebrate road kills over two time  
833 periods, 9 years apart: a case study in Mediterranean farmland. *European Journal of Wildlife  
834 Research* **57** (1), 157–174.
- 835 CARVALHO, F., LOURENÇO, A., CARVALHO, R., ALVES, P.C., MIRA, A. & BEJA, P.  
836 (2018). The effects of a motorway on movement behaviour and gene flow in a forest  
837 carnivore: Joint evidence from road mortality, radio tracking and genetics. *Landscape and  
838 Urban Planning* **178**, 217–227.
- 839 CEIA-HASSE, A., NAVARRO, L.M., BORDA-DE-ÁGUA, L. & PEREIRA, H.M. (2018).  
840 Population persistence in landscapes fragmented by roads: Disentangling isolation, mortality,  
841 and the effect of dispersal. *Ecological Modelling* **375**, 45–53.
- 842 CHAMBERS, B. & BENCINI, R. (2010). Road mortality reduces survival and population  
843 growth rates of tammar wallabies on Garden Island, Western Australia. *Wildlife Research* **37**  
844 (7), 588–596.
- 845 CHAMBERS, B.K. (2009). *Human disturbance affects the ecology and population dynamics  
846 of the tammar wallaby, Macropus eugenii, on Garden Island, Western Australia*. Ph.D.  
847 thesis. The University of Western Australia.
- 848 COALITION FOR SONORAN DESERT PROTECTION (2022). *Safe passages for wildlife  
849 on I-10 East - final report*. Arizona Game and Fish Department.
- 850 COE, P.K., NIELSON, R.M., JACKSON, D.H., CUPPLES, J.B., SEIDEL, N.E., JOHNSON,  
851 B.K., GREGORY, S.C., BJORNSTROM, G.A., LARKINS, A.N. & SPETEN, D.A. (2015).  
852 Identifying migration corridors of mule deer threatened by highway development. *Wildlife  
853 Society Bulletin* **39** (2), 256–267.
- 854 COLLEVATTI, R.G., LEITE, K.C.E., DE MIRANDA, G.H.B. & RODRIGUES, F.H.G.  
855 (2007). Evidence of high inbreeding in a population of the endangered giant anteater,  
856 *Myrmecophaga tridactyla* (Myrmecophagidae), from Emas National Park, Brazil. *Genetics  
857 and Molecular Biology* **30** (1), 112–120.
- 858 CONGDON, J., DUNHAM, A. & VAN LOBEN SELS, R. (1994). Demographics of  
859 common snapping turtles (*Chelydra serpentina*): implications for conservation and  
860 management of long-lived organisms. *American Zoologist* **34** (3), 397–408.
- 861 CORLETT, R.T. (2017). A bigger toolbox: Biotechnology in biodiversity conservation.  
862 *Trends in Biotechnology* **35** (1), 55–65.
- 863 \*CUKOR, J., HAVRANEK, F., LINDA, R., BUKOVJAN, K., PAINTER, M.S. & HART, V.  
864 (2018). First findings of brown hare (*Lepus europaeus*) reintroduction in relation to seasonal  
865 impact. *PLoS ONE* **13** (10), e0205078.

- 866 CYPHER, B.L., BJURLIN, C.D. & NELSON, J.L. (2009). Effects of roads on endangered  
867 San Joaquin kit foxes. *Journal of Wildlife Management* **73** (6), 885–893.
- 868 DESBIEZ, A.L.J., BERTASSONI, A. & TRAYLOR-HOLZER, K. (2020). Population  
869 viability analysis as a tool for giant anteater conservation. *Perspectives in Ecology and*  
870 *Conservation* **18** (2), 124–131.
- 871 \*DEVIVO, M.T., COTTRELL, W.O., DEBERTI, J.M., DUCHAMP, J.E., HEFFERNAN, L.M.,  
872 KOUGH, J.D. & LARKIN, J.L. (2011). Survival and cause-specific mortality of elk *Cervus*  
873 *canadensis* calves in a predator rich environment. *Wildlife Biology* **17** (2), 156–165.
- 874 DINIZ, M.F. & BRITO, D. (2013). Threats to and viability of the giant anteater,  
875 *Myrmecophaga tridactyla* (Pilosa: Myrmecophagidae), in a protected Cerrado remnant  
876 encroached by urban expansion in central Brazil. *Zoologia (Curitiba)* **30** (2), 151–156.
- 877 DOHERTY, T.S., DICKMAN, C.R., NIMMO, D.G. & RITCHIE, E.G. (2015). Multiple  
878 threats, or multiplying the threats? Interactions between invasive predators and other  
879 ecological disturbances. *Biological Conservation* **190**, 60–68.
- 880 FAHRIG, L. & RYTWINSKI, T. (2009). Effects of roads on animal abundance: An  
881 empirical review and synthesis. *Ecology and Society* **14** (1).  
882 <http://www.ecologyandsociety.org/vol14/iss1/art21/>
- 883 FEY, K., HÄMÄLÄINEN, S. & SELONEN, V. (2016). Roads are no barrier for dispersing  
884 red squirrels in an urban environment. *Behavioral Ecology* **27** (3), 741–747.
- 885 FISCHER, J.D., CLEETON, S.H., LYONS, T.P. & MILLER, J.R. (2012). Urbanization and  
886 the predation paradox: The role of trophic dynamics in structuring vertebrate communities.  
887 *BioScience* **62** (9), 809–818.
- 888 FRAIR, J.L., MERRILL, E.H., ALLEN, J.R. & BOYCE, M.S. (2007). Know thy enemy:  
889 experience affects elk translocation success in risky landscapes. *Journal of Wildlife*  
890 *Management* **71** (2), 541–554.
- 891 FRASER, L.H., HENRY, H. AL, CARLYLE, C.N., WHITE, S.R., BEIERKUHNLEIN, C.,  
892 CAHILL, J.F., CASPER, B.B., CLELAND, E., COLLINS, S.L., DUKES, J.S., KNAPP,  
893 A.K., LIND, E., LONG, R., LUO, Y., REICH, P.B., *ET AL.* (2013). Coordinated distributed  
894 experiments: an emerging tool for testing global hypotheses in ecology and environmental  
895 science. *Frontiers in Ecology and the Environment* **11** (3), 147–155.
- 896 \*GABRIEL, M.W., WOODS, L.W., WENGERT, G.M., STEPHENSON, N., HIGLEY, J.M.,  
897 THOMPSON, C., MATTHEWS, S.M., SWEITZER, R.A., PURCELL, K., BARRETT, R.H.,  
898 KELLER, S.M., GAFFNEY, P., JONES, M., POPPENG, R., FOLEY, J.E., *ET AL.* (2015).

- 899 Patterns of natural and human-caused mortality factors of a rare forest carnivore, the fisher  
900 (*Pekania pennanti*) in California. *PLoS ONE* **10** (11), e0140640.
- 901 GALANTINHO, A., SANTOS, S., EUFRÁZIO, S., SILVA, C., CARVALHO, F.,  
902 ALPIZAR-JARA, R. & MIRA, A. (2022). Effects of roads on small-mammal movements:  
903 Opportunities and risks of vegetation management on roadsides. *Journal of Environmental*  
904 *Management* **316**, 115272.
- 905 \*GARROTE, G., BUENO, J.F., RUIZ, M., DE LILLO, S., MARTIN, J.M., MORAL, M. & SIMÓN,  
906 M.A. (2020). Breaking barriers: Iberian *lynx lynx* pardinus Temminck, 1827 (Mammalia:  
907 Carnivora: Felidae) colonizing olive groves. *Journal of Threatened Taxa* **12** (2), 15221–  
908 15228.
- 909 GIBBS, J.P. & SHRIVER, W.G. (2005). Can road mortality limit populations of pool-  
910 breeding amphibians? *Wetlands Ecology and Management* **13** (3), 281–289.
- 911 \*GORMAN, T.A., MCMILLAN, B.R., ERB, J.D., DEPERNO, C.S. & MARTIN, D.J. (2008).  
912 Survival and cause-specific mortality of a protected population of river otters in Minnesota.  
913 *The American Midland Naturalist* **159** (1), 98–109.
- 914 GREEN-BARBER, J.M. & OLD, J.M. (2019). What influences road mortality rates of  
915 eastern grey kangaroos in a semi-rural area? *BMC Zoology* **4** (11).
- 916 GRILO, C., BORDA-DE-ÁGUA, L., BEJA, P., GOOLSBY, E., SOANES, K., LE ROUX,  
917 A., KOROLEVA, E., FERREIRA, F.Z., GAGNÉ, S.A., WANG, Y. & GONZÁLEZ-  
918 SUÁREZ, M. (2021). Conservation threats from roadkill in the global road network. *Global*  
919 *Ecology and Biogeography* **30** (11), 2200–2210.
- 920 GRILO, C., SOUSA, J., ASCENSÃO, F., MATOS, H., LEITÃO, I., PINHEIRO, P.,  
921 COSTA, M., BERNARDO, J., RETO, D., LOURENÇO, R., SANTOS-REIS, M. &  
922 REVILLA, E. (2012). Individual spatial responses towards roads: implications for mortality  
923 risk. *PLoS ONE* **7** (9), 1–11.
- 924 \*GROVENBURG, T.W., KLAVER, R.W. & JENKS, J.A. (2012) Survival of white-tailed deer  
925 fawns in the grasslands of the northern Great Plains. *Journal of Wildlife Management* **76** (5),  
926 944–956.
- 927 \*GROVENBURG, T.W., SWANSON, C.C., JACQUES, C.N., DEPERNO, C.S., KLAVER, R.W. &  
928 JENKS, J.A. (2011). Female white-tailed deer survival across ecoregions in Minnesota and  
929 South Dakota. *American Midland Naturalist* **165** (2), 426–435.
- 930 GRUEBER, C.E., REID-WAINSCOAT, E.E., FOX, S., BELOV, K., SHIER, D.M., HOGG,  
931 C.J. & PEMBERTON, D. (2017). Increasing generations in captivity is associated with



- 932 increased vulnerability of Tasmanian devils to vehicle strike following release to the wild.  
 933 *Scientific Reports* **7** (1), 2161.
- 934 HADDAWAY, N.R., COLLINS, A.M., COUGHLIN, D. & KIRK, S. (2015). The role of  
 935 Google Scholar in evidence reviews and its applicability to grey literature searching. *PLoS*  
 936 *ONE* **10** (9), e0138237.
- 937 \*HAUS, J.M., WEBB, S.L., STRICKLAND, B.K., ROGERSON, J.E. & BOWMAN, J.L. (2019). Land  
 938 use and dispersal influence mortality in white-tailed deer. *Journal of Wildlife Management* **83**  
 939 (5), 1185–1196.
- 940 \*HEINEN, J.T. & KANDEL, R. (2006). Threats to a small population: A census and  
 941 conservation recommendations for wild buffalo *Bubalus arnee* in Nepal. *ORYX* **40** (3), 324–  
 942 330.
- 943 \*HEURICH, M., MÖST, L., SCHAUBERGER, G., REULEN, H., SUSTR, P. & HOTHORN, T. (2012).  
 944 Survival and causes of death of European roe deer before and after Eurasian lynx  
 945 reintroduction in the Bavarian Forest National Park. *European Journal of Wildlife Research*  
 946 **58**, 567–578.
- 947 HILL, J.E., DEVAULT, T.L. & BELANT, J.L. (2019). Cause-specific mortality of the  
 948 world's terrestrial vertebrates. *Global Ecology and Biogeography* **28** (5), 680–689.
- 949 HOLLINGS, T., JONES, M., MOONEY, N. & MCCALLUM, H. (2014). Trophic cascades  
 950 following the disease-induced decline of an apex predator, the Tasmanian Devil.  
 951 *Conservation Biology* **28** (1), 63–75.
- 952 \*HOSTETLER, J.A., WALTER MCCOWN, J., GARRISON, E.P., NEILS, A.M.,  
 953 BARRETT, M.A., SUNQUIST, M.E., SIMEK, S.L. & OLI, M.K. (2009). Demographic  
 954 consequences of anthropogenic influences: Florida black bears in north-central Florida.  
 955 *Biological Conservation* **142** (11), 2456–2463.
- 956 HUIJSER, M.P., DUFFIELD, J.W., CLEVINGER, A.P., AMENT, R.J. & MCGOWEN,  
 957 P.T. (2009). Cost-benefit analyses of mitigation measures aimed at reducing collisions with  
 958 large ungulates in the United States and Canada: A decision support tool. *Ecology and*  
 959 *Society* **14** (2). <http://www.ecologyandsociety.org/vol14/iss2/art15/>.
- 960 IBISCH, P.L., HOFFMANN, M.T., KREFT, S., PE'ER, G., KATI, V., BIBER-  
 961 FREUDENBERGER, L., DELLASALA, D.A., VALE, M.M., HOBSON, P.R. & SELVA, N.  
 962 (2016). A global map of roadless areas and their conservation status. *Science* **354** (6318),  
 963 1423–1427.
- 964 IUCN (2020). *IUCN Red List 2017-2020 Report*. <https://tinyurl.com/bdhp77zt>
- 965 IUCN (2021). *IUCN Red List of Threatened Species*. <https://www.iucnredlist.org/>

- JACKSON, N.D. & FAHRIG, L. (2011). Relative effects of road mortality and decreased connectivity on population genetic diversity. *Biological Conservation* **144** (12), 3143–3148.
- \*JACQUES, C.N., JENKS, J.A., SIEVERS, J.D., RODDY, D.E. & LINDZEY, F.G. (2007). Survival of pronghorns in western South Dakota. *Journal of Wildlife Management* **71** (3), 737–743.
- JAEGER, J.A.G. & FAHRIG, L. (2001). Modeling the effects of road networks patterns on population persistence: relative importance of traffic mortality and ‘fence effect’. *ICOET 2001 Proceedings*. <https://escholarship.org/uc/item/094328p3>.
- KANDA (2005). *Factors Influencing Survival And Reproduction Of Virginia Opossums (Didelphis Virginiana) At Their Northern Distributional Limit*. Ph.D. thesis. University of Massachusetts Amherst.
- KAUTZ, T.M., FOWLER, N.L., PETROELJE, T.R., BEYER, D.E., SVOBODA, N.J. & BELANT, J.L. (2021). Large carnivore response to human road use suggests a landscape of coexistence. *Global Ecology and Conservation* **30**, e01772.
- \*KELLY, A., SCRIVENS, R. & GROGAN, A. (2010). Post-release survival of orphaned wild-born polecats *Mustela putorius* reared in captivity at a wildlife rehabilitation centre in England. *Endangered Species Research* **12**, 107–115.
- \*KILGO, J.C., VUKOVICH, M., CONROY, M.J., RAY, H.S. & RUTH, C. (2016). Factors affecting survival of adult female white-tailed deer after coyote establishment in south Carolina. *Wildlife Society Bulletin* **40**, 747–753.
- \*KLAR, N., HERRMANN, M. & KRAMER-SCHADT, S. (2006). Effects of roads on a founder population of lynx in the biosphere reserve ‘Pfälzerwald -Vosges du Nord’ A model as planning tool. *Naturschutz und Landschaftsplanung* **38**, 330–337.
- KLÖCKER, U., CROFT, D.B. & RAMP, D. (2006). Frequency and causes of kangaroo-vehicle collisions on an Australian outback highway. *Wildlife Research* **33** (1), 5–15.
- KREBS, C.J. (2009). *Ecology: The experimental analysis of distribution and abundance*. 6th edition. Essex, UK, Pearson.
- LANDIS, J.R. & KOCH, G.G. (1977). The measurement of observer agreement for categorical data. *Biometrics* **33** (1), 159.
- \*LEE, E. & CROFT, D.B. (2008). The effects of an arid-zone road on vertebrates: What are the priorities for management? *Australian Zoologist* **34**, 105–117.
- LEHNERT, M.E., BISSONETTE, J.A. & HAEFNER, J.W. (1998). Deer (Cervidae) highway mortality: using models to tailor mitigative efforts. In: *Proceedings of the XXIIIrd Congress of the International Union of Game Biologists (I.U.G.B.)*. pp. 835–841.

- 999 LEHRER, E.W., SCHOOLEY, R.L. & WHITTINGTON, J.K. (2012). Survival and  
 1000 antipredator behavior of woodchucks (*Marmota monax*) along an urban-agricultural gradient.  
 1001 *Canadian Journal of Zoology* **90** (1), 12–21.
- 1002 \*LENTING, B., GARTRELL, B., KOKOSINSKA, A., DUIGNAN, P.J., MICHAEL, S.,  
 1003 HUNTER, S. & ROE, W.D. (2019). Causes of adult mortality in two populations of New  
 1004 Zealand sea lions (*Phocarctos hookeri*). *Veterinary and Animal Science* **7**, 100057.
- 1005 LOGAN, K.A. & RUNGE, J.P. (2020). Effects of hunting on a puma population in Colorado.  
 1006 *Wildlife Monographs* **209** (1), 1–35.
- 1007 \*VAN MANEN, F.T., MCCOLLISTER, M.F., NICHOLSON, J.M., THOMPSON, L.M.,  
 1008 KINDALL, J.L. & JONES, M.D. (2012). Short-term impacts of a 4-lane highway on  
 1009 American black bears in eastern North Carolina. *Wildlife Monographs* **181** (1), 1–35.
- 1010 MCCLEERY, R.A., LOPEZ, R.R., SILVY, N.J. & GALLANT, D.L. (2008). Fox squirrel  
 1011 survival in urban and rural environments. *Journal of Wildlife Management* **72** (1), 133–137.
- 1012 \*MCGREGOR, R.A., STOKES, V.L. & CRAIG, M.D. (2014). Does forest restoration in  
 1013 fragmented landscapes provide habitat for a wide-ranging carnivore? *Animal Conservation*  
 1014 **17** (5), 467–475.
- 1015 MCHUGH, M.L. (2012). Interrater reliability: the kappa statistic. *Biochemia Medica* **22** (3),  
 1016 276–282.
- 1017 \*MCKINNEY, T., SMITH, T.W. & WADDELL, R.B. (2009). Rates of survival and sources  
 1018 of mortality of cougars in hunted populations in north-central Arizona. *The Southwestern*  
 1019 *Naturalist* **54** (2), 151–155.
- 1020 MEIJER, J.R., HUIJBREGTS, M.A.J., SCHOTTEN, K.C.G.J. & SCHIPPER, A.M. (2018).  
 1021 Global patterns of current and future road infrastructure. *Environmental Research Letters* **13**  
 1022 (6), 064006.
- 1023 MILLERET, C., WABAKKEN, P., LIBERG, O., ÅKESSON, M., FLAGSTAD, Ø.,  
 1024 ANDREASSEN, H.P. & SAND, H. (2017). Let's stay together? Intrinsic and extrinsic  
 1025 factors involved in pair bond dissolution in a recolonizing wolf population. *Journal of Animal*  
 1026 *Ecology* **86** (1), 43–54.
- 1027 MIOTTO, R.A., CERVINI, M., BEGOTTI, R.A. & GALETTI, P.M. (2012). Monitoring a  
 1028 puma (*Puma concolor*) population in a fragmented landscape in southeast Brazil. *Biotropica*  
 1029 **44** (1), 98–104.
- 1030 \*MISIOROWSKA, M. & WASILEWSKI, M. (2012). Survival and causes of death among  
 1031 released brown hares (*Lepus europaeus* Pallas, 1778) in Central Poland. *Acta Theriologica* **57**  
 1032 (4), 305–312.



- MITRO, M.G. (2011). Demography and viability analyses of a diamondback terrapin population. *Canadian Journal of Zoology* **81** (4), 716–726.
- \*MONTEIRO-ALVES, P.S., HELMER, D.M., FERREGUETTI, A.C., PEREIRA-RIBEIRO, J., ROCHA, C.F.D. & BERGALLO, H.G. (2019). Occupancy, detectability, and density of crab-eating fox (*Cerdocyon thous*) in two protected areas of restinga habitats in Brazil. *Canadian Journal of Zoology* **97**, 952–959.
- MUMME, R.L., SCHOECH, S.J., WOOLFENDEN, G.E. & FITZPATRICK, J.W. (2000). Life and death in the fast lane: demographic consequences of road mortality in the Florida Scrub-Jay. *Conservation Biology* **14** (2), 501–512.
- \*MURRAY, M.H. & ST CLAIR, C.C. (2015). Individual flexibility in nocturnal activity reduces risk of road mortality for an urban carnivore. *Behavioral Ecology* **26** (6), 1520–1527.
- \*MUSANTE, A.R., PEKINS, P.J. & SCARPITTI, D.L. (2010). Characteristics and dynamics of a regional moose *Alces alces* population in the northeastern United States. *Wildlife Biology* **16**, 185–204.
- \*NIELSEN, C.K. & STROUD-SETTLES, J.K. (2017). Survival of female white-tailed deer (*Odocoileus virginianus*) in the northern lower peninsula of Michigan. *Mammal Study* **42** (4), 1–7.
- NUÑEZ, M.A. & AMANO, T. (2021). Monolingual searches can limit and bias results in global literature reviews. *Nature Ecology and Evolution* **5** (3), 264.
- NYIRENDA, V.R., NAMUKONDE, N. & FUSHIKE, P. (2017). Road kills of wild vertebrates in Kafue National Park, Zambia, between January 2008 and December 2012. *African Journal of Ecology* **55** (4), 738–741.
- PEREIRA, J.A., FRACASSI, N.G., RAGO, V., FERREYRA, H., MARULL, C.A., MCALOOSE, D. & UHART, M.M. (2010). Causes of mortality in a Geoffroy's cat population - a long-term survey using diverse recording methods. *European Journal of Wildlife Research* **56** (6), 939–942.
- \*PETERSON, C. & MESSMER, T.A. (2011). Biological consequences of winter-feeding of mule deer in developed landscapes in northern Utah. *Wildlife Society Bulletin* **35** (3), 252–260.
- \*PETERSON, M.E., ANDERSON, C.R., NORTHRUP, J.M. & DOHERTY, P.F. (2018). Mortality of mule deer fawns in a natural gas development area. *Journal of Wildlife Management* **82** (6), 1135–1148.
- PULLIN, A.S. & STEWART, G.B. (2006). Guidelines for systematic review in conservation and environmental management. *Conservation Biology* **20** (6), 1647–1656.

- 1067 RAMP, D. & BEN-AMI, D. (2006). The effect of road-based fatalities on the viability of a  
 1068 peri-urban swamp wallaby population. *Journal of Wildlife Management* **70** (6), 1615–1624.
- 1069 RILEY, S.P.D., POLLINGER, J.P., SAUVAJOT, R.M., YORK, E.C., BROMLEY, C.,  
 1070 FULLER, T.K. & WAYNE, R.K. (2006). A southern California freeway is a physical and  
 1071 social barrier to gene flow in carnivores. *Molecular Ecology* **15** (7), 1733–1741.
- 1072 ROEDENBECK, I.A., FAHRIG, L., FINDLAY, C.S., HOULAHAN, J.E., JAEGER, J.A.G.,  
 1073 KLAR, N., KRAMER-SCHADT, S. & VAN DER GRIFT, E.A. (2007). The  
 1074 Rauschholzhausen agenda for road ecology. *Ecology and Society* **12** (1).  
 1075 <http://www.ecologyandsociety.org/vol12/iss1/art11/>.
- 1076 \*ROGER, E., BINO, G. & RAMP, D. (2012). Linking habitat suitability and road mortalities  
 1077 across geographic ranges. *Landscape Ecology* **27** (8), 1167–1181.
- 1078 ROGER, E., LAFFAN, S.W. & RAMP, D. (2011). Road impacts a tipping point for wildlife  
 1079 populations in threatened landscapes. *Population Ecology* **53** (1), 215–227.
- 1080 \*ROSATTE, R., HAMR, J., YOUNG, J., FILION, I. & SMITH, H. (2007). The restoration of  
 1081 elk (*Cervus elaphus*) in Ontario, Canada: 1998–2005. *Restoration Ecology* **15** (1), 34–43.
- 1082 ROW, J.R., BLOUIN-DEMERS, G. & WEATHERHEAD, P.J. (2007). Demographic effects  
 1083 of road mortality in black ratsnakes (*Elaphe obsoleta*). *Biological Conservation* **137** (1), 117–  
 1084 124.
- 1085 \*RUETTE, S., VANDEL, J.M., ALBARET, M. & DEVILLARD, S. (2015). Comparative  
 1086 survival pattern of the syntopic pine and stone martens in a trapped rural area in France.  
 1087 *Journal of Zoology* **295** (3), 214–222.
- 1088 RUIZ-CAPILLAS, P., MATA, C. & MALO, J.E. (2015). How many rodents die on the road?  
 1089 Biological and methodological implications from a small mammals' roadkill assessment on a  
 1090 Spanish motorway. *Ecological Research* **30** (3), 417–427.
- 1091 RYTWINSKI, T. & FAHRIG, L. (2015). The impacts of roads and traffic on terrestrial  
 1092 animal populations. In: *Handbook of Road Ecology*. Chichester, UK, John Wiley & Sons,  
 1093 Ltd. pp. 237–246.
- 1094 SANTOS, R.A.L., SANTOS, S.M., SANTOS-REIS, M., PICANÇO DE FIGUEIREDO, A.,  
 1095 BAGER, A., AGUIAR, L.M.S. & ASCENSÃO, F. (2016). Carcass persistence and  
 1096 detectability: reducing the uncertainty surrounding wildlife-vehicle collision surveys. *PLoS*  
 1097 *ONE* **11** (11), e0165608.
- 1098 SCHAFER, A. & VICTOR, D.G. (2000). The future mobility of the world population.  
 1099 *Transportation Research Part A: Policy and Practice* **34** (3), 171–205.

- SEILER, A. (2003). *The toll of the automobile: Wildlife and roads in Sweden*. Ph.D. thesis. Swedish University of Agricultural Sciences.
- \*SERGEYEV, M., MCMILLAN, B.R., HERSEY, K.R. & LARSEN, R.T. (2021). How size and condition influence survival and cause-specific mortality of female elk. *Journal of Wildlife Management* **85** (3), 474–483.
- SERIEYS, L.E.K., ROGAN, M.S., MATSUSHIMA, S.S. & WILMERS, C.C. (2021). Road-crossings, vegetative cover, land use and poisons interact to influence corridor effectiveness. *Biological Conservation* **253**, 108930.
- \*SEVERUD, W.J., OBERMOLLER, T.R., DELGIUDICE, G.D. & FIEBERG, J.R. (2019). Survival and cause-specific mortality of moose calves in northeastern Minnesota. *Journal of Wildlife Management* **83** (5), 1131–1142.
- SIDOROVICH, A.A., NOVITSKY, R. V. & SOLOVEJ, I.A. (2020). Road mortality of carnivores (*Mammalia, carnivora*) in Belarus. *Zoodiversity* **54** (3), 211–220.
- SIMEK, S., JONKER, S., SCHIECK, B., ENDRIES, M. & EASON, T. (2005). Statewide assessment of road impacts on bears in six study areas in Florida. *Florida Fish and Wildlife Conservation Commission*.
- SIMMONS, J.M., SUNNUCKS, P., TAYLOR, A.C. & VAN DER REE, R. (2010). Beyond roadkill, radiotracking, recapture and Fst—a review of some genetic methods to improve understanding of the influence of roads on wildlife. *Ecology and Society* **15** (1).  
<https://www.ecologyandsociety.org/vol15/iss1/art9/>
- SNOW, N.P., ANDELT, W.F., STANLEY, T.R., RESNIK, J.R. & MUNSON, L. (2012). Effects of roads on survival of San Clemente Island foxes. *Journal of Wildlife Management* **76** (2), 243–252.
- SPARKMAN, A.M., WAITS, L.P. & MURRAY, D.L. (2011). Social and demographic effects of anthropogenic mortality: a test of the compensatory mortality hypothesis in the Red Wolf. *PLoS ONE* **6** (6), e20868.
- STENGLEIN, J.L., VAN DEELEN, T.R., WYDEVEN, A.P., MLADENOFF, D.J., WIEDENHOEFT, J.E., BUSINGA, N.K., LANGENBERG, J.A., THOMAS, N.J. & HEISEY, D.M. (2015). Mortality patterns and detection bias from carcass data: An example from wolf recovery in Wisconsin. *Journal of Wildlife Management* **79** (7), 1173–1184.
- STEVENSON, E.R., COLTER CHITWOOD, M., LASHLEY, M.A., POLLOCK, K.H., SWINGEN, M.B., MOORMAN, C.E. & DEPERNO, C.S. (2016). Survival and cause-specific mortality of coyotes on a large military installation. *Southeastern Naturalist* **15** (3), 459–466.

1  
2  
3 1134 \*SUNGA, J., SAYERS, J., COTTENIE, K., KYLE, C.J. & ETHIER, D.M. (2017). The  
4 1135 effects of roads on habitat selection and movement patterns of the American badger  
5 1136 subspecies *Taxidea taxus jacksoni* in Ontario, Canada. *Canadian Journal of Zoology* **95** (11),  
6 1137 821–828.  
7  
8 1138 SWEITZER, R.A., POPESCU, V.D., THOMPSON, C.M., PURCELL, K.L., BARRETT,  
9 1139 R.H., WENGERT, G.M., GABRIEL, M.W. & WOODS, L.W. (2016). Mortality risks and  
10 1140 limits to population growth of fishers. *Journal of Wildlife Management* **80** (3), 438–451.  
11 1141 \*TEMPLE, D.L., CHAMBERLAIN, M.J. & CONNER, L.M. (2010). Spatial ecology,  
12 1142 survival and cause-specific mortality of gray foxes (*Urocyon cinereoargenteus*) in a longleaf  
13 1143 pine ecosystem. *The American Midland Naturalist* **163** (2), 413–422.  
14 1144 TESTUD, G., VERGNES, A., CORDIER, P., LABARRAQUE, D. & MIAUD, C. (2019).  
15 1145 Automatic detection of small PIT-tagged animals using wildlife crossings. *Animal*  
16 1146 *Biotelemetry* **7** (1).  
17 1147 TRI, A.N., EDWARDS, J.W., RYAN, C.W., CARPENTER, C.P., CARR, P.C., TERNENT,  
18 1148 M.A., STRAGER, M.P. & PETTY, J.T. (2017). Harvest rates and cause-specific mortality of  
19 1149 American black bears in the wildland–urban interface of the Mid-Atlantic region, USA.  
20 1150 *Ursus* **28** (2), 195–207.  
21 1151 \*VALERIO, F., BASILE, M. & BALESTRIERI, R. (2021). The identification of wildlife-  
22 1152 vehicle collision hotspots: Citizen science reveals spatial and temporal patterns. *Ecological*  
23 1153 *Processes* **10** (1), 1–13.  
24 1154 \*VAUGHAN, M., KELLY, M. & TRENT, J.A. (2011). Evaluating potential effects of  
25 1155 widening US 64 on the black bear population of Alligator River National Wildlife Refuge,  
26 1156 Dare County, North Carolina. North Carolina Department of Transportation.  
27 1157 \*VICKERS, T.W., SANCHEZ, J.N., JOHNSON, C.K., MORRISON, S.A., BOTTA, R.,  
28 1158 SMITH, T., COHEN, B.S., HUBER, P.R., ERNEST, H.B. & BOYCE, W.M. (2015). Survival  
29 1159 and mortality of pumas (*Puma concolor*) in a fragmented, urbanizing landscape. *PLoS ONE*  
30 1160 **10** (7), e0131490.  
31 1161 \*VREELAND, J.K., DIEFENBACH, D.R. & WALLINGFORD, B.D. (2004). Survival rates,  
32 1162 mortality causes, and habitats of Pennsylvania white-tailed deer fawns. *Wildlife Society*  
33 1163 *Bulletin* **32** (2), 542–553.  
34 1164 \*WARBINGTON, C.H., VAN DEELEN, T.R., NORTON, A.S., STENGLEIN, J.L.,  
35 1165 STORM, D.J. & MARTIN, K.J. (2017). Cause-specific neonatal mortality of white-tailed  
36 1166 deer in Wisconsin, USA. *The Journal of Wildlife Management* **81** (5), 824–833.  
37  
38  
39  
40  
41  
42  
43  
44  
45  
46  
47  
48  
49  
50  
51  
52  
53  
54  
55  
56  
57  
58  
59  
60

- WHITE, T.B., PETROVAN, S.O., CHRISTIE, A.P., MARTIN, P.A. & SUTHERLAND, W.J. (2022). What is the price of conservation? A review of the status quo and recommendations for improving cost reporting. *BioScience* **72** (5), 461–471.
- \*WHITMAN, B.J., PORTER, W.F., DECHEN QUINN, A.C., WILLIAMS, D.M., FRAIR, J., BRIAN UNDERWOOD, H. & CRAWFORD, J.C. (2018). Movement behavior preceding autumn mortality for white-tailed deer in central New York. *Journal of Mammalogy* **99** (3), 675–683.
- \*WILLIAMS, D. (2019). *An introduced primate species, Chlorocebus sabaeus, in Dania beach, Florida: investigating origins, demographics, and anthropogenic implications of an established population*. Ph.D. thesis, Florida Atlantic University.
- \*WILLIAMS, S.C. & GREGONIS, M.A. (2015). Survival and movement of rehabilitated white-tailed deer fawns in Connecticut. *Wildlife Society Bulletin* **39** (3), 664–669.
- \*WOODROFFE, R. (2011). Demography of a recovering African wild dog (*Lycaon pictus*) population. *Journal of Mammalogy* **92** (2), 305–315.
- WRIGHT, C.A., ADAMS, I.T., STENT, P. & FORD, A.T. (2020). Comparing survival and movements of non-urban and urban translocated mule deer. *Journal of Wildlife Management* **84** (8), 1457–1472.
- \*WYZA, E., DOLLAR, L. & STEVENS, N.J. (2018). First evidence of male spatial associations and roadkill mortality in the Fosa *Cryptoprocta ferox* in Ankarafantsika National Park, Madagascar. *Small Carnivore Conservation* **56**, 76–85.

## VIII. SUPPORTING INFORMATION

Additional supporting information may be found online in the Supporting Information section at the end of the article.

**Table S1.** Search strings of the five languages used in the systematic literature search.

**Table S2.** Suggested advantages and disadvantages of various study designs identified in the systematic review in relation to their ability to collect data relevant for interpreting population-level impacts of road mortality.

**Table S3.** Key data collated from the final set of articles identified in the systematic search.

1  
2  
3  
4  
5  
6  
7  
8  
9  
10  
11  
12  
13  
14  
15  
16  
17  
18  
19  
20  
21  
22  
23  
24  
25  
26  
27  
28  
29  
30  
31  
32  
33  
34  
35  
36  
37  
38  
39  
40  
41  
42  
43  
44  
45  
46  
47  
48  
49  
50  
51  
52  
53  
54  
55  
56  
57  
58  
59  
60

1196 Table 1. *A priori* criteria used to select studies for inclusion during the systematic review.

<i>A priori</i> criteria	
<b>Population</b>	Wild mammal population in any country.
<b>Intervention</b>	Road collisions leading to the mortality of a mammalian animal. Any road type was considered.
<b>Comparator</b>	No comparator, gradient, or Before–After–Control–Impact (BACI) methods were necessary for inclusion.
<b>Outcome</b>	Any effect on population biology, including (but not limited to) <i>per capita</i> mortality, age/stage/sex-specific mortality, reproductive rates, movement, growth rates, genetic structure.
<b>Types of study</b>	Any empirical study or simulation using real-world data.

1197

1198



1199 Table 2. List of inclusion/exclusion criteria at the full-text stage during the systematic search.

Criteria	
Included in the final set of papers	<b>Original research</b> – studies that presented empirical data on road mortality with any demographic data. This included simulation studies if using real data, either collected by the authors or from existing literature post-2000.
	<b>Systematic data collection</b> – road mortality figures collected in a systematic manner or from monitoring wild populations (e.g. <i>via</i> radio-collars) to ensure accuracy of collated data. Papers were excluded if they were not explicit about data-collection methods.
	<b>Road mortality only</b> – studies that assessed the impacts caused by roads, excluding other transportation infrastructure such as railways. Data were only included if reports of road mortality were presented separately from other transport collisions.
Excluded from the final set of papers	<b>Public involvement</b> – studies using records that were reliant on public involvement, such as from rescue centres, wildlife hospitals or citizen science, because of potential recorder inaccuracies, spatial auto-correlation and/or non-exhaustive samples due to an unknown, variable, and unbalanced sampling effort.
	<b>Lack of population context</b> – reports of sex- and age-specific roadkill or spatiotemporal roadkill patterns with no population context, such as population size, sex- or age-ratio.
	<b>Outside of desired time period</b> – studies that reported data spanning pre- and post-2000 and that could not be separated for quantitative analyses.
	<b>Opportunistic data</b> – studies that reported on roadkill data collected systematically <i>and</i> opportunistically but did not separate the data.
	<b>Literature reviews</b> – including meta-analyses.

1200

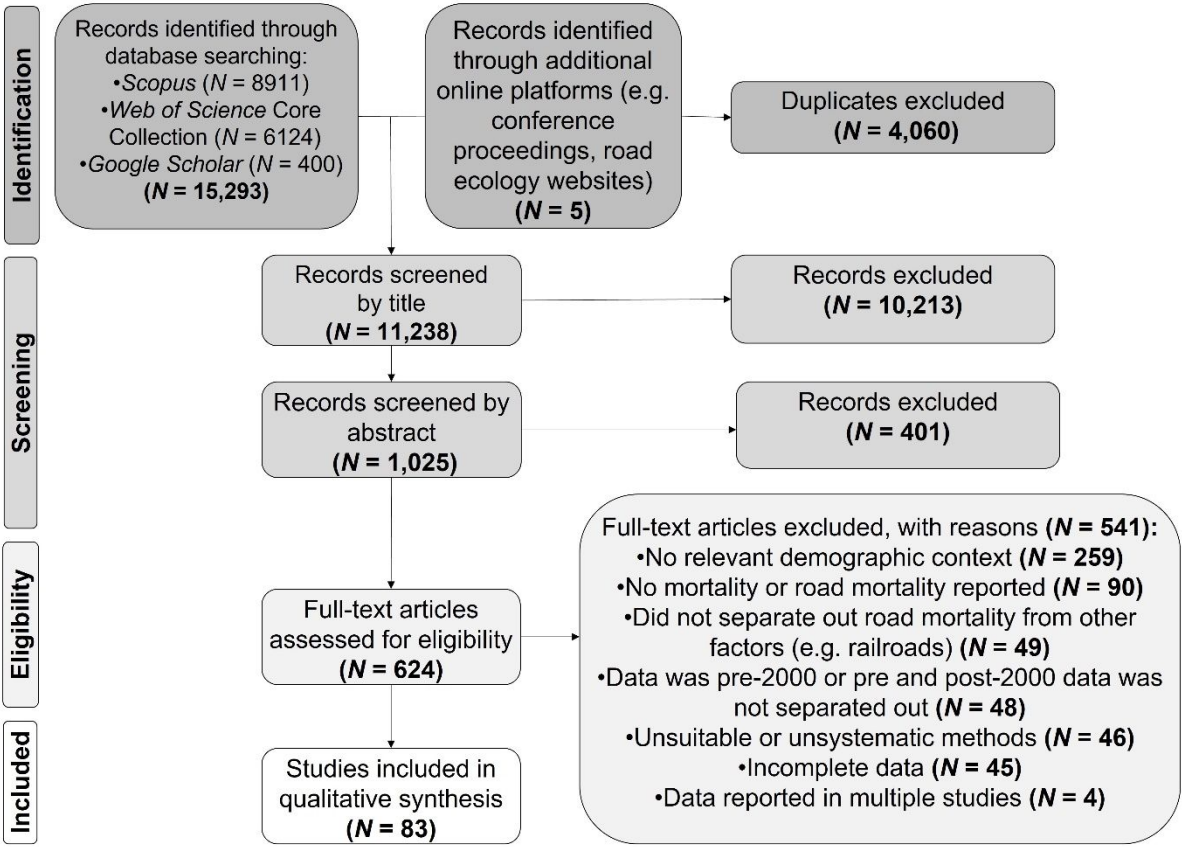
1201

1202 Table 3. Descriptions of the eight parameters categorised from the 83 papers retrieved during the systematic review.

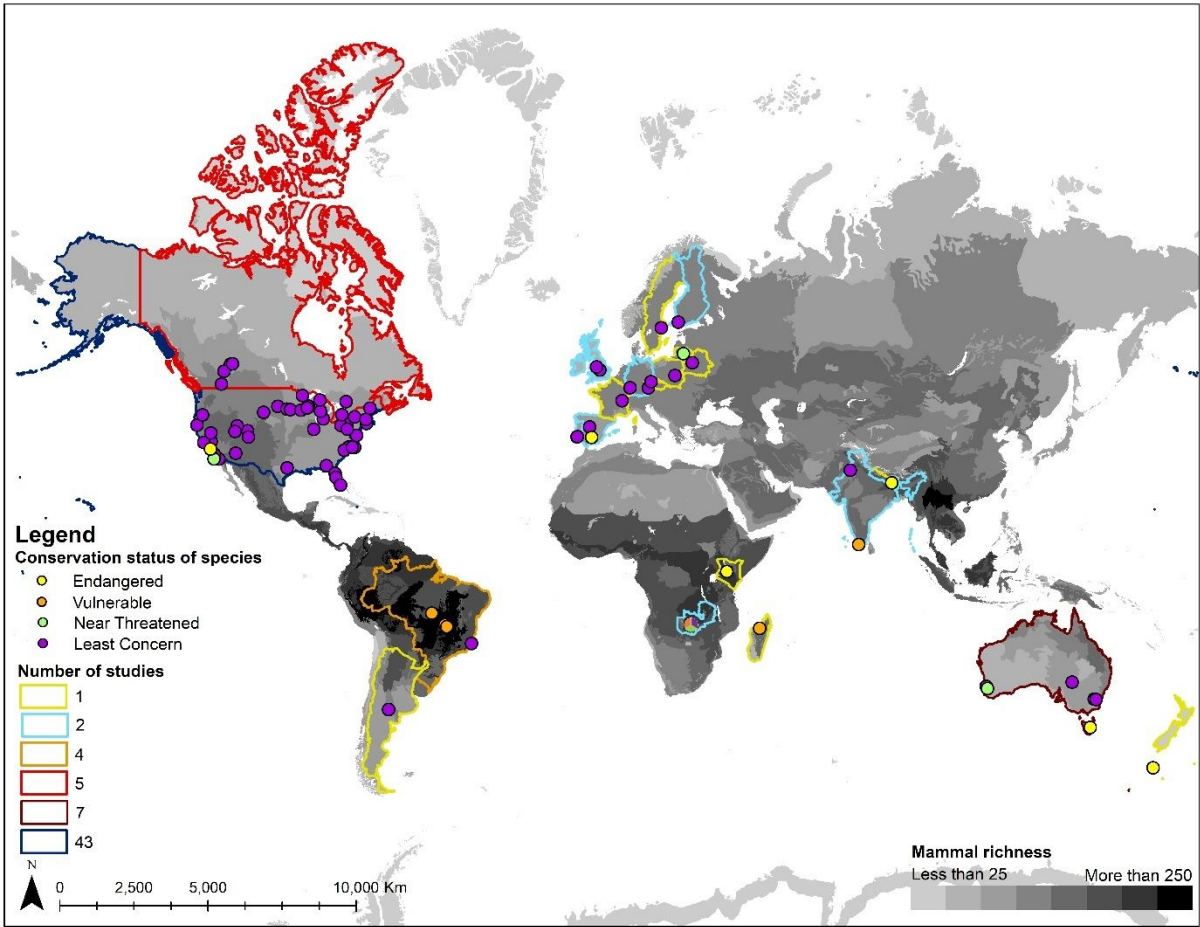
	Demographic parameters	Description	Number of studies (percentage of studies) *
Direct	Percentage of a population killed on roads per year	The number of individuals killed on roads as a percentage of the total population per year.	61 (36.1%)
	Contribution to total mortality	The contribution of road mortality deaths relative to the total mortality rate in a set time period, such as a year.	58 (34.3%)
	Sex-biased road mortality	The ratio of males: females found killed on roads relative to the sex ratio in the population (i.e. whether one sex is killed on roads more than expected given their prevalence in the population). A significant chi-squared result was considered to represent a bias.	16 (9.5%)
	Age-biased road mortality	The ratio of adults: sub-adults: juveniles found killed on roads relative to the age ratio in the population. A significant chi-squared result was considered to represent a bias.	13 (7.7%)
	Roadkill during inter-patch or long-distance movements	Road mortality interfering with the success of movement-related behaviour that is not part of day-to-day activities (e.g. foraging), such as mortality during known dispersal events or migration.	7 (4.1%)
Indirect	Population growth rates	Temporal changes to population growth rate because of animals removed by road mortality.	7 (4.1%)
	Population persistence	The extent to which road mortality impacts the persistence of populations.	5 (3.0%)
	Genetic diversity	Changes to the heterozygosity within/between populations as a result of road mortality.	2 (1.2%)

1203 \*Note that several papers reported on more than one demographic parameter.

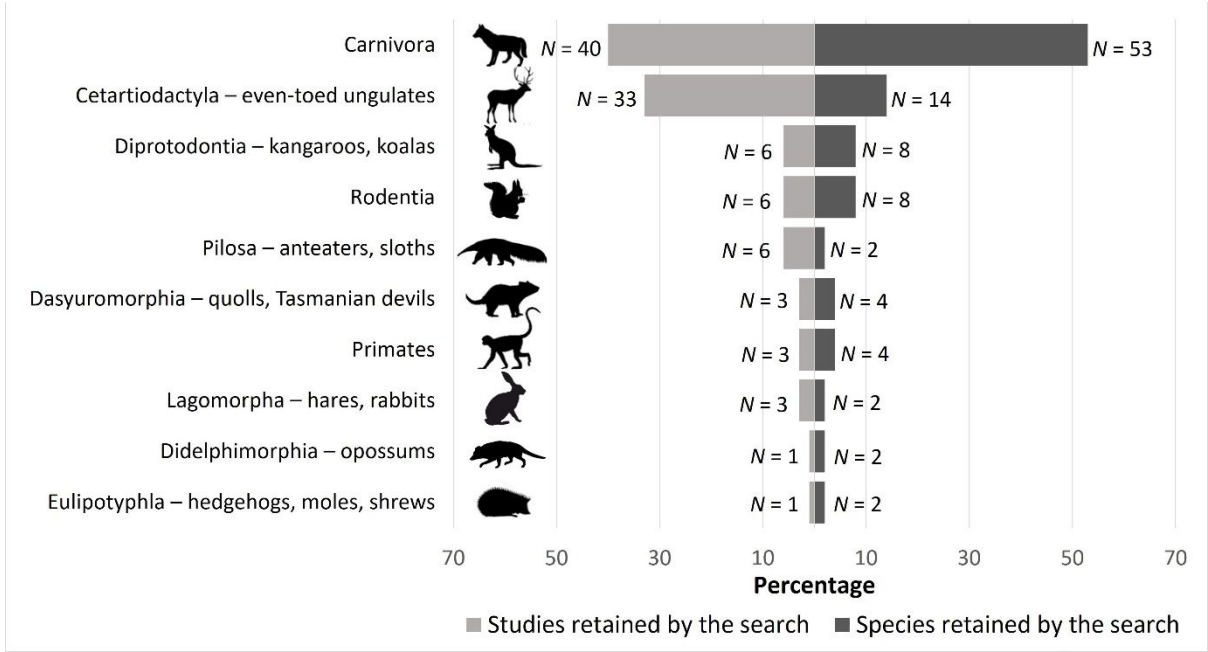




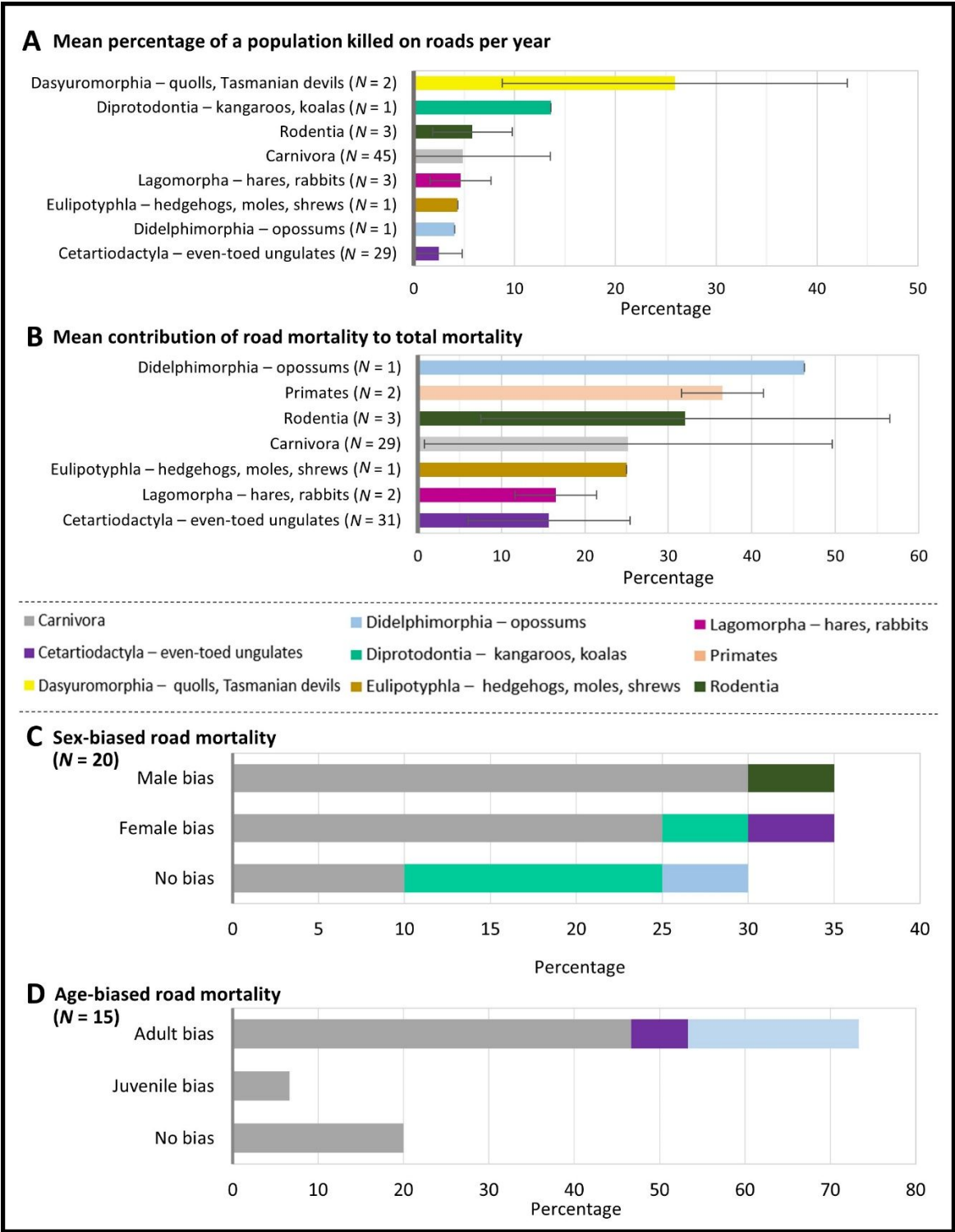
**Fig. 1.** Literature search and screening flow diagram of studies included and excluded from the systematic review.



**Fig. 2.** Locations of the 83 studies included in the qualitative synthesis. Coloured points represent the centroid location of each study.



**Fig. 3.** Percentage and numbers of studies and species included in the systematic review, by taxon. Note that some studies reported data on several species. Various Artists/Shutterstock.com.



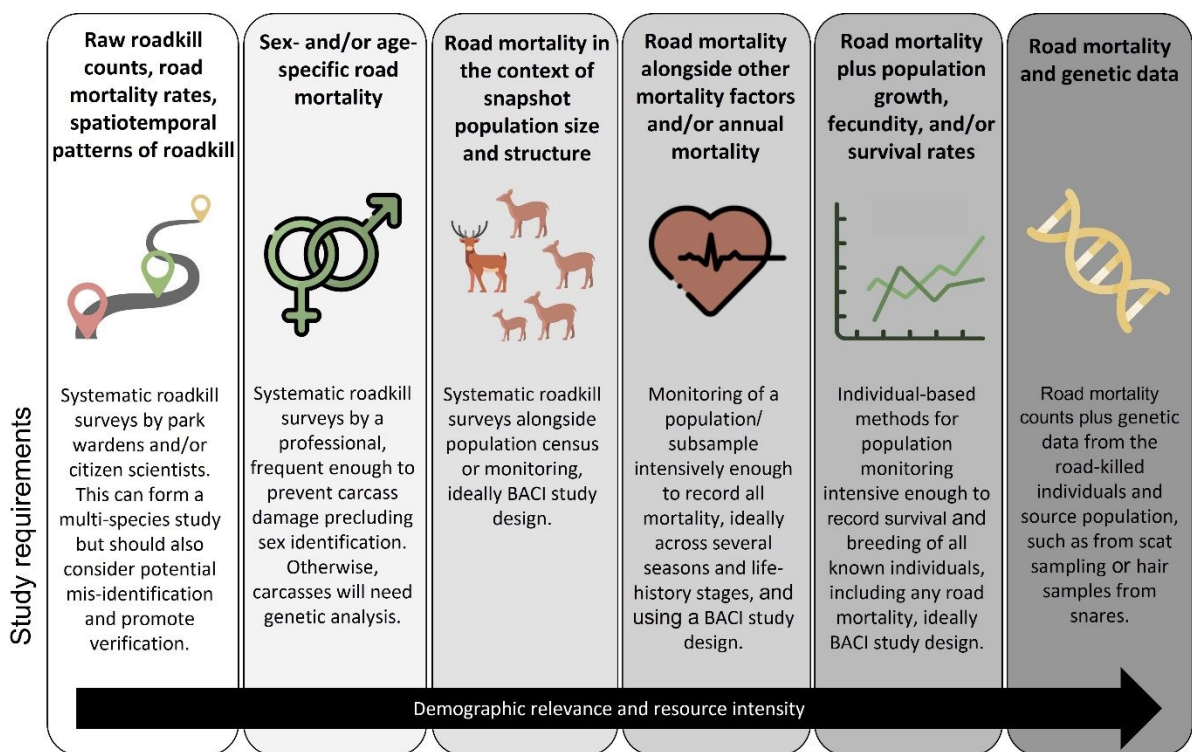
**Fig. 4.** Results from four direct demographic parameters identified by the systematic search.

The number of studied populations is provided in brackets. (A) Mean percentage of studied populations killed on roads. (B) Mean contribution of road mortality to total mortality for the studied populations. (C) Percentage of populations with male-biased, female-biased and no sex bias to the road mortality records. (D) Percentage of populations with adult-biased,

1  
2  
3  
4  
5  
6  
7  
8  
9  
10  
11  
12  
13  
14  
15  
16  
17  
18  
19  
20  
21  
22  
23  
24  
25  
26  
27  
28  
29  
30  
31  
32  
33  
34  
35  
36  
37  
38  
39  
40  
41  
42  
43  
44  
45  
46  
47  
48  
49  
50  
51  
52  
53  
54  
55  
56  
57  
58  
59  
60

1223 juvenile-biased and no age bias to the road mortality records. Error bars in A and B represent  
1224  $\pm 1SD$ .  
1225

For Review Only



**Fig. 5.** Suggested hierarchy and requirements of study designs relevant to examining the impacts of road mortality on population persistence. BACI, Before–After–Control–Impact. Various Artists/Flaticon.com.

<i>A priori criteria</i>	
<b>Population</b>	Wild mammal population in any country.
<b>Intervention</b>	Road collisions leading to the mortality of mammalian animal. Any road type was considered.
<b>Comparator</b>	No comparator, gradient, or Before-After-Control-Impact (BACI) methods were necessary for inclusion.
<b>Outcome</b>	Any effect on population biology, including (but not limited to) per capita mortality, age/stage/sex-specific mortality, reproductive rates, movement, growth rates, genetic structure.
<b>Types of study</b>	Any empirical study or simulation using real world data.

Table 1. A priori criteria used to select studies for inclusion during the systematic review.

162x108mm (300 x 300 DPI)



Criteria	
Included in the final set of papers	<b>Original research</b> - studies that presented empirical data on road mortality figures with any demographic data. This included simulation studies if using real data, either collected by the authors or from existing literature post-2000.
	<b>Systematic data collection</b> - road mortality figures collected in a systematic manner or from monitoring wild populations (e.g., via radio-collars) to ensure accuracy of collated data. Papers were excluded if they were not explicit about data collection methods.
	<b>Road mortality only</b> - studies that assessed the impacts caused by roads, excluding other transportation infrastructure such as railroads. Data were only included if reports of road mortality were presented separately from other transport collisions.
Excluded from the final set of papers	<b>Public involvement</b> - studies using records that were reliant on public involvement, such as from rescue centres, wildlife hospitals or citizen science, because of potential recorder inaccuracies, spatial auto-correlation and/or non-exhaustive samples due to an unknown, variable, and unbalanced sampling effort.
	<b>Lack of population context</b> - reports of sex- and age-specific roadkill or spatiotemporal roadkill patterns with no population context, such as population size, sex- or age-ratio.
	<b>Outside of desired time period</b> - studies that reported data spanning pre- and post-2000 and that could not be separated for quantitative analyses.
	<b>Opportunistic data</b> - studies that reported on roadkill data collected systematically <i>and</i> opportunistically but did not separate the data.
<b>Literature reviews</b> - including meta-analyses.	

Table 2. List of inclusion/exclusion criteria at the full-text stage during the systematic search.

110x117mm (300 x 300 DPI)

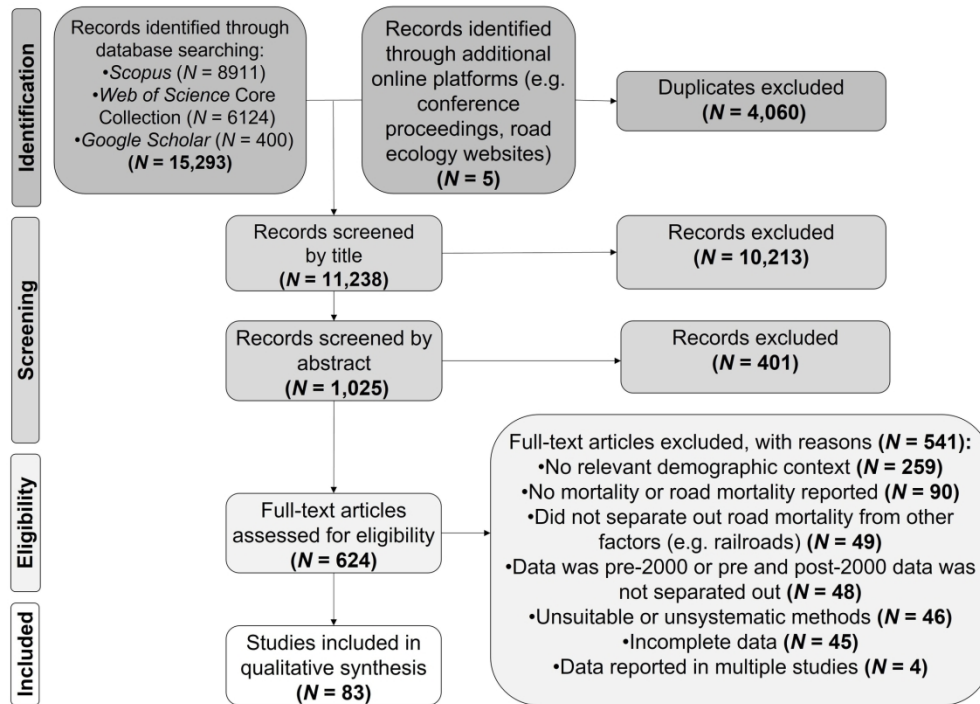


Fig. 1. Literature search and screening flow diagram of studies included and excluded from the systematic review.

186x134mm (300 x 300 DPI)

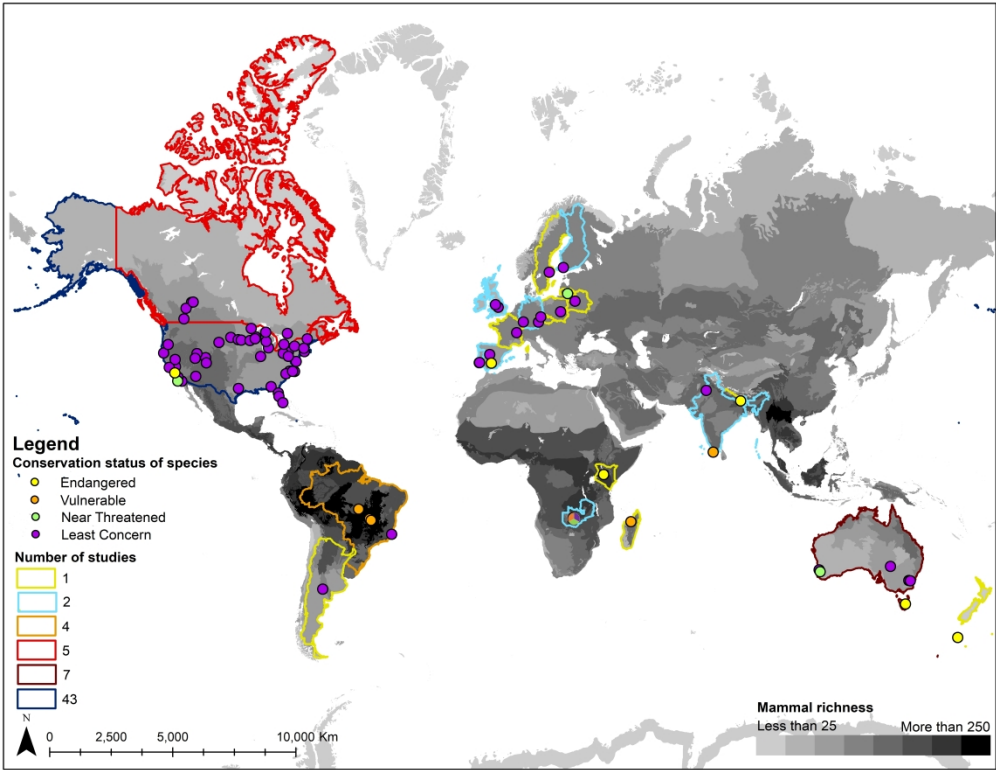


Fig. 2. Locations of the 83 studies included in the qualitative synthesis. Coloured points represent the centroid location of each study.

279x215mm (600 x 600 DPI)

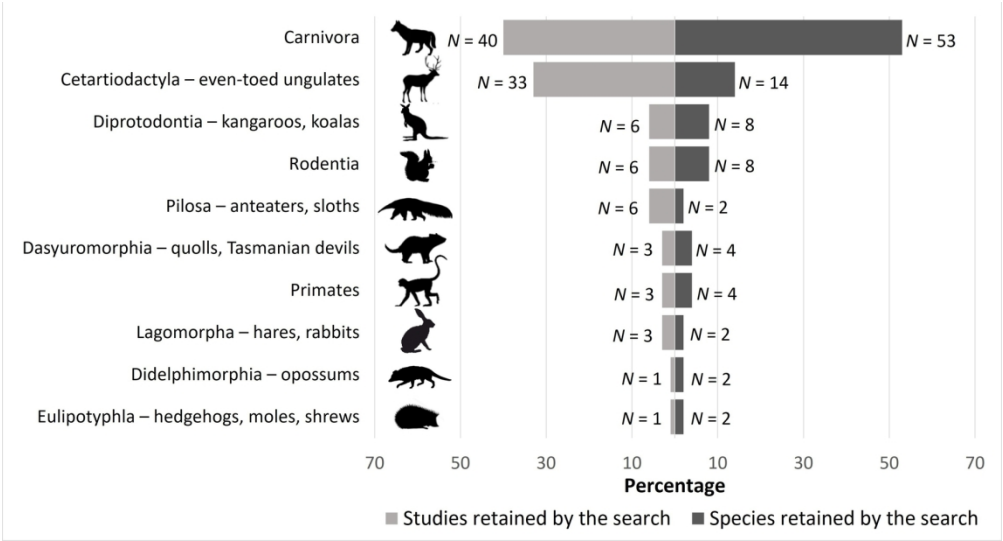


Fig. 3. Percentage and numbers of studies and species included in the systematic review, by taxon. Note that some studies reported data on several species. Various Artists/Shutterstock.com.

160x86mm (300 x 300 DPI)

	Demographic parameters	Description	Number of studies (percentage of studies) *
Direct	Percentage of a population killed on roads per year	The number of individuals killed on roads as a percentage of the total population per year.	61 (36.1%)
	Contribution to total mortality	The contribution of road mortality deaths relative to the total mortality rate in a set time period, such as a year.	58 (34.3%)
	Sex-biased road mortality	The ratio of males: females found killed on roads relative to the sex-ratio in the population (i.e., whether one sex is killed on roads more than expected given their prevalence in the population). A significant chi-squared result was considered to represent a bias.	16 (9.5%)
	Age-biased road mortality	The ratio of adults: sub-adults: juveniles found killed on roads relative to the age-ratio in the population. A significant chi-squared result was considered to represent a bias.	13 (7.7%)
	Roadkill during inter-patch or long-distance movements	Road mortality interfering with the success of movement-related behaviour that is not part of day-to-day activities (e.g., foraging), such as mortality during known dispersal events or migration.	7 (4.1%)
	Population growth rates	Temporal changes to population growth rate because of animals removed by road mortality.	7 (4.1%)
Indirect	Population persistence	The extent to which road mortality impacts the persistence of populations.	5 (3.0%)
	Genetic diversity	Changes to the heterozygosity within/between populations as a result of road mortality.	2 (1.2%)

\*Note that several papers reported on more than one demographic parameter.

Table 3. Descriptions of the eight parameters categorised from the 83 papers retrieved during the systematic review.

172x91mm (300 x 300 DPI)

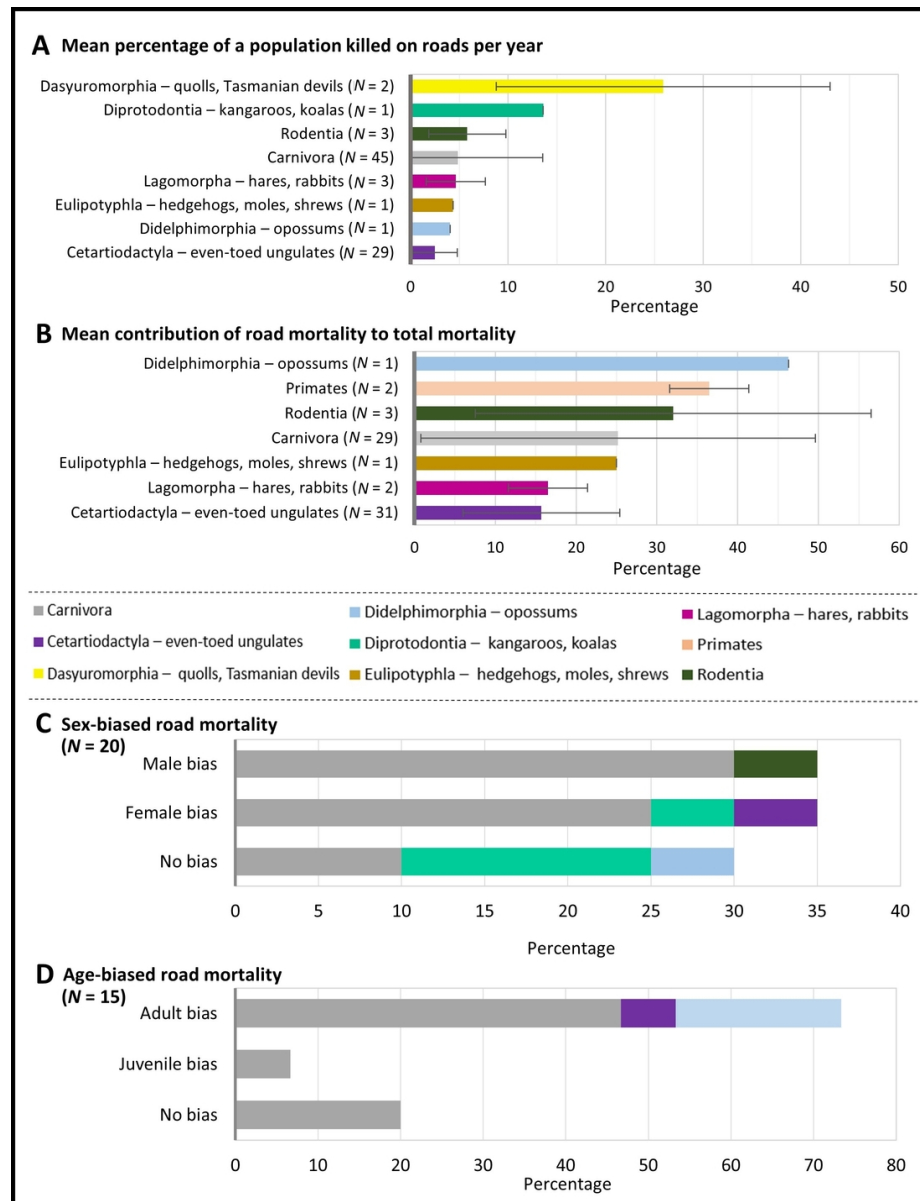


Fig. 4. Results from four direct demographic parameters identified by the systematic search. The number of studied populations is provided in brackets. (A) Mean percentage of studied populations killed on roads. (B) Mean contribution of road mortality to total mortality for the studied populations. (C) Percentage of populations with male-biased, female-biased and no sex bias to the road mortality records. (D) Percentage of populations with adult-biased, juvenile-biased and no age bias to the road mortality records. Error bars in A and B represent  $\pm 1SD$ .

93x121mm (300 x 300 DPI)

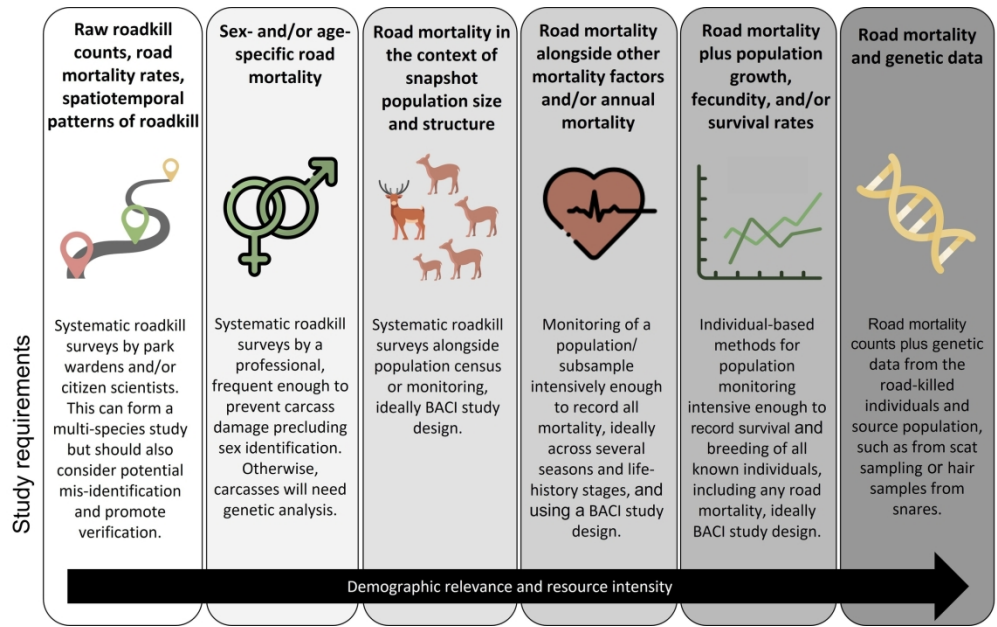


Fig. 5. Suggested hierarchy and requirements of study designs relevant to examining the impacts of road mortality on population persistence. BACI, Before–After–Control–Impact. Various Artists/Flaticon.com.

202x125mm (300 x 300 DPI)



Table S1. Search strings of the five languages used in the systematic literature search.

<b>Brazilian Portuguese</b>	<b>English</b>	<b>French</b>	<b>Spanish</b>	<b>Portuguese</b>
Matança na estrada	Roadkill	Animaux morts sur la route	Animal atropellado	Estrada da morte / Acidente rodoviário
Mortalidade	Mortality/mortalities	Mortalité	Mortalidad	Mortalidade
Fatalidade	Fatality/fatalities	Fatalité	Fatalidad	Fatalidade
Greve	Strike	Frappe	Ataque / golpe	Pancada
Colisão	Collision	Collision	Colisión	Colisão
Antropogênico	Anthropogenic	Anthropique	Antropogénico	Antropogénico
Veículo	Vehicle	Véhicule/transporte	Vehículo	Veículo
Estrada	Road	Route	Carretera	Estrada
Rodovia	Highway	Autoroute	Carretera	Auto-estrada
Tráfego	Traffic	Trafic	Tráfico	Trânsito
Autoestrada/autopista	Motorway	Autoroute	Autopista/estrada	Auto-estrada/autopista
Autoestrada	Freeway	Autoroute	Autopista	Auto-estrada
Via expressa	Expressway	Voie express	Autopista	Via expressa
Sobrevivência	Survival	Survie	Supervivencia	Sobrevivência
População	Population	Population	Población	População
Viabilidade	Viability	Viabilité	Viabilidad	Viabilidade
Ameaça	Threat	Menace	Amenaza	Perigo
Declínio	Decline	Declin/regression	Descenso/disminución	Declínio
Extinção	Extinction	L'extinction	Extinción	Extinção
Extirpação	Extirpation	L'extirpation	Extirpación	Extirpação
Esgotamento	Depletion	Epuisement	Agotamiento	Exaustão
Dispersão	Dispersal	Dispersion	Dispersión	Dispersão
Movimento	Movement	Mouvement	Movimiento	Movimento
Migrando	Migrating	Migration de / migrer	Migrando	Migrando
Migração	Migration	Migration	Migração / migración	Migração
Genético	Genetics	Genetique	Genético	Genético
Navio / embarcação	Vessel	Navire / bateau/vaisseau	Buque / embarcación	Navio / embarcação
Barco	Boat	Bateau	Barco / bote	Barco

\*GPS: Geographical Positioning System

‡VHF: Very High Frequency

Table S2. Suggested advantages and disadvantages of various study designs identified in the systematic review in relation to their ability to collect data relevant for interpreting population-level impacts of road mortality.

Method	Advantages	Disadvantages	Sensitivity of method (probability of detecting carcass if present)	References
Radio tracking only (and associated telemetry technologies such as GPS* and satellite tracking)	<ul style="list-style-type: none"><li>Detailed information to provide context to road mortality, including survival rates, cause-specific mortality, reproduction, movements (including inter-patch or dispersal movements), and behaviour of individuals and groups.</li><li>No bias to the significance of mortality causes as all causes are detected equally.</li><li>Suitable for individual recognition and monitoring of individuals without unique marks or colouration.</li><li>Can be used in remote areas.</li><li>Relatively long life of tracking equipment.</li><li>Different equipment is available to suit study design and objectives, such as satellite tracking, GPS tracking, VHF<sup>‡</sup> tracking.</li></ul>	<ul style="list-style-type: none"><li>High initial costs (but equipment generally has long life span).</li><li>Due to high initial costs, often applied to a small sample of individuals.</li><li>High labour and time requirements (although less so for GPS and satellite tracking).</li><li>GPS collars/tags are of limited use for small mammals because of collar weight or the inability to produce a recordable signal, although technology continues to advance.</li></ul>	High sensitivity	Benson <i>et al.</i> (2020) ; Serieys <i>et al.</i> (2021); Tri <i>et al.</i> (2017)
Year-round population monitoring	<ul style="list-style-type: none"><li>Detailed information to provide context to road mortality, including survival rates, cause-specific mortality, reproduction, movements (including inter-patch or dispersal movements), and behaviour of individuals and groups.</li><li>Details on individuals and the whole population, rather than a small subsample of the population.</li></ul>	<ul style="list-style-type: none"><li>Can require intensive survey effort and logistics.</li><li>Likely restricted to smaller areas due to survey effort needed.</li><li>Requires standardisation for robust data collection.</li></ul>	High sensitivity	Arlet <i>et al.</i> (2021); Lenting <i>et al.</i> (2019)

\*GPS: Geographical Positioning System

‡VHF: Very High Frequency

Method	Advantages	Disadvantages	Sensitivity of method (probability of detecting carcass if present)	References
<b>Radio-tracking and year-round population monitoring</b>	<ul style="list-style-type: none"> <li>Detailed information to provide context to road mortality, including survival rates, cause-specific mortality, reproduction, movements (including inter-patch or dispersal movements), and behaviour of individuals and groups.</li> <li>Comprehensive knowledge on a sub-sample of individuals can give further insight into trends observed in the wider population.</li> </ul>	<ul style="list-style-type: none"> <li>Different biases in the detection of mortality causes between radio-tracking and year-round monitoring need to be considered when interpreting data.</li> <li>High labour and time requirements due to intensive survey effort and logistics.</li> <li>High initial costs for radio-telemetry equipment.</li> </ul>	High sensitivity	Pereira <i>et al.</i> , (2020); Snow <i>et al.</i> , (2012)
<b>Systematic roadkill surveys and one-time population estimate (capture, mark–recapture/resight, counts along transects or variable plots, genetic data from, for example, hair snares)</b>	<ul style="list-style-type: none"> <li>Systematic surveys can detect a large proportion of the roadkill present, increasing accuracy of records compared to opportunistic records.</li> <li>Population size is context for road mortality rates allowing estimation of proportion of population killed on roads annually.</li> </ul>	<ul style="list-style-type: none"> <li>Populations can fluctuate over time, therefore comparing road mortality with a single population size estimate provides a snapshot only.</li> <li>Systematic roadkill surveys can have low searcher efficiency and carcass detectability, especially for small sized carcasses.</li> <li>Intensive survey effort needed to cover large areas.</li> </ul>	Medium sensitivity	Ruiz-Capillas <i>et al.</i> (2015); Simek <i>et al.</i> (2005)
<b>Systematic roadkill surveys and radio tracking</b>	<ul style="list-style-type: none"> <li>Systematic surveys can detect a large proportion of the roadkill present, increasing accuracy of records compared to opportunistic records.</li> <li>Combining these methods provides extensive population context to the road mortality figures, such as cause-specific mortality and reproduction.</li> <li>No bias to the significance of mortality causes as all causes are detected equally.</li> </ul>	<ul style="list-style-type: none"> <li>Costly.</li> <li>High labour and time requirements.</li> <li>Sample sizes of radio-tracked individuals are often small, roadkill may be found of untracked individuals with limited background information (e.g. age, road crossing movements).</li> </ul>	High sensitivity	Carvalho <i>et al.</i> (2018)

\*GPS: Geographical Positioning System

‡VHF: Very High Frequency

Method	Advantages	Disadvantages	Sensitivity of method (probability of detecting carcass if present)	References
	<ul style="list-style-type: none"><li>• Good for validation between the methods for a comprehensive data set.</li></ul>			
Systematic roadkill surveys and population monitoring	<ul style="list-style-type: none"><li>• Systematic surveys can detect a large proportion of the roadkill present, increasing accuracy of records compared to opportunistic records.</li><li>• Combining these methods provides extensive population context to road mortality figures, such as cause-specific mortality and reproduction.</li><li>• Likely to have known identity or background information for road-killed individuals.</li><li>• Good for validation between methods for a comprehensive data set.</li></ul>	<ul style="list-style-type: none"><li>• Can require intensive survey effort and logistics.</li><li>• Likely restricted to smaller areas due to survey effort needed.</li></ul>	High sensitivity	Nyirenda <i>et al.</i> (2017)
Systematic roadkill surveys and secondary population data	<ul style="list-style-type: none"><li>• Systematic surveys can detect a large proportion of the roadkill present, increasing accuracy of records compared to opportunistic records.</li><li>• Can collect data on roadkill of multiple species simultaneously if secondary data are available for context.</li><li>• Cheaper and quicker than collecting primary data.</li></ul>	<ul style="list-style-type: none"><li>• Systematic roadkill surveys can have low searcher efficiency and carcass detectability, especially for small-sized carcasses.</li><li>• Secondary population data are not always available for the same time period as the roadkill surveys, leading to a potential mis-match in information.</li><li>• No control over the quality of secondary population data.</li></ul>	Medium sensitivity	Balčiauskas, (2012); Roger <i>et al.</i> (2012); Seiler (2003)

\*GPS: Geographical Positioning System

‡VHF: Very High Frequency

Method	Advantages	Disadvantages	Sensitivity of method (probability of detecting carcass if present)	References
<b>Systematic roadkill surveys, radio tracking and population estimate</b>	<ul style="list-style-type: none"> <li>• Likely to record virtually all roadkill present.</li> <li>• Detailed information to provide context to road mortality, including survival rates, cause-specific mortality, reproduction, movements (including inter-patch or dispersal movements), and behaviour of individuals and groups.</li> <li>• Suitable for individual recognition and monitoring of individuals without unique marks or colouration.</li> </ul>	<ul style="list-style-type: none"> <li>• Costly.</li> <li>• High labour and time requirements.</li> </ul>	Very high sensitivity	van Manen <i>et al.</i> (2012)
<b>Simulations using real data (e.g. Population Viability Analyses, sensitivity analyses)</b>	<ul style="list-style-type: none"> <li>• Can assess conservation priorities by forecasting stochastic and deterministic processes governing population growth rates.</li> <li>• Can direct decision-making by comparing a range of alternative management strategies (note that simulations provide better relative than absolute results).</li> <li>• Uncertainties and natural variabilities in a population can be incorporated into models.</li> </ul>	<ul style="list-style-type: none"> <li>• The accuracy of the results relies on a large amount of high-quality data.</li> <li>• The required data and/or a good level of understanding of the focal species is rarely available.</li> <li>• Relative certainty in the results is restricted to a few time intervals only as errors are magnified with each time step.</li> <li>• Many models remain unvalidated.</li> </ul>	n/a	Burgman and Possingham (2010)
<b>Opportunistic records of road mortality, often by citizen science, rescue centres, wildlife hospitals, <i>ad hoc</i> observations by park wardens or tourists.†</b>	<ul style="list-style-type: none"> <li>• Large amounts of data can be collected.</li> <li>• Can collect data on roadkill of multiple species simultaneously.</li> <li>• Long-term and geographically widespread data can be collected.</li> <li>• Depending on target species, can be undertaken with limited capacity or training.</li> </ul>	<ul style="list-style-type: none"> <li>• Unsystematic roadkill surveys often have low searcher efficiency, carcass detectability, especially for small-sized carcasses, and potential recorder inaccuracies.</li> <li>• Tendency to report charismatic and easily identifiable species more than professional surveys.</li> <li>• Spatial auto-correlation due to potential bias in geographical spread of surveyor effort (i.e.</li> </ul>	Low sensitivity	Balčiauskas, (2020); Valerio <i>et al.</i> (2021)

\*GPS: Geographical Positioning System

†VHF: Very High Frequency

1  
2  
3  
4  
5  
6  
7  
8  
9  
10  
11  
12  
13  
14  
15  
16  
17  
18  
19  
20  
21  
22  
23  
24  
25  
26  
27  
28  
29  
30  
31  
32  
33  
34  
35  
36  
37  
38  
39  
40  
41  
42  
43  
44  
45  
46

Method	Advantages	Disadvantages	Sensitivity of method (probability of detecting carcass if present)	References
		unknown, variable, and unbalanced sampling effort). •Raw roadkill figures only, without population context to aid interpretation.		

†These methods were not included in the review due to the potential limitations detailed above but are included here for completeness.

\*GPS: Geographical Positioning System  
‡VHF: Very High Frequency

[illegible]