

**A closer look at the relationship between multidimensional perfectionism and multidimensional self-compassion: Structural equation modeling the relationship between *Concern over mistakes*, *Striving for excellence*, *Discrepancy*, and the six dimensions of self-compassion**

Rebecca J. Linnett

&

Fraenze Kibowski

Nottingham Trent University

**Author details**

*Rebecca Linnett, BSc (hons), MRes – corresponding author*

University of Leicester (new affiliation), Department of Health Sciences, George Davies Centre, University Road, Leicester, LE1 7RH

Email: [rebecca.j.linnett@gmail.com](mailto:rebecca.j.linnett@gmail.com)

ORCID ID: [orcid.org/0000-0002-7357-0552](https://orcid.org/0000-0002-7357-0552)

Twitter: @rebeccalinnett

*Dr. Fraenze Kibowski*

Nottingham Trent University, 50 Shakespeare Street, Nottingham, NG1 4FQ

Telephone: (0115) 848 4514

Email: [fraenze.kibowski@ntu.ac.uk](mailto:fraenze.kibowski@ntu.ac.uk)

ORCID ID: [orcid.org/0000-0002-8852-1278](https://orcid.org/0000-0002-8852-1278)

## Abstract

Preliminary research suggests that maladaptive perfectionism impedes the development of self-compassion, a self-attitude with numerous biopsychosocial benefits (MacBeth & Gumley, 2012; Neff & Knox, 2017). The precise relationship between these constructs remains unclear, but if accurately modelled could foster an understanding of the barriers that perfectionists experience to being self-compassionate, enabling focused interventions to be developed.

This general population study (N=428) used structural equation modelling to investigate how multidimensional perfectionism related to multidimensional self-compassion. The negative perfectionism dimensions of *Concern over mistakes* and *Discrepancy* significantly predicted lower levels of overall self-compassion and its positive dimensions of *Self-kindness*, *Common humanity* and *Mindfulness*.

Findings were discussed in relation to the development of population-tailored, dual-focused, interventions aimed at reducing perfectionism and increasing self-compassion.

*Keywords: Perfectionism, self-compassion, structural equation modeling, SEM, latent variable modeling*

## 1. Introduction

The established biopsychosocial benefits of self-compassion are considerable (see MacBeth & Gumley, 2012; Neff & Knox, 2017), yet research so far suggests that perfectionists often struggle to develop and maintain such a mindset (Ferrari, Yap, Scott, Einstein, & Ciarrochi, 2018; Hiçdurmaz & Aydin, 2017; Mosewich et al., 2011; Neff, 2003a). A more thorough investigation of the relationship between these constructs is needed to enable researchers to begin to understand what barriers perfectionists face in being self-compassionate, and consequently what psychological tools could be developed and implemented to attempt to break down these barriers. This paper reports on a structural equation modeling approach to investigating this relationship, grounded in existing conceptualizations and understandings of multidimensional perfectionism.

### *1.1 Multidimensional perfectionism*

Perfectionism is a multidimensional personality trait characterized by striving for flawlessness, excessive self-scrutiny, and concern over mistakes (Sirois & Molnar, 2017; Stoeber, 2017). Whilst debate continues over its factor structure, benefits, and costs, it is widely acknowledged that perfectionism varies along a continuum, with people displaying different amounts of overall perfectionism and the characteristics that underpin its various subscales (Gaudreau, Franche, Kljajic, & Martinelli, 2017).

Multidimensional approaches to measuring perfectionism began with Frost, Marten, Lahart, and Rosenblate (1990), who developed a six-factor model differentiating between positive and negative aspects of the construct. The following year, Hewitt and Flett (1991) posited a three-factor model which similarly outlined perfectionism as being multidimensional. However, in comparison to Frost et al. (1990), Hewitt and Flett (1991) contended that all the dimensions they had identified were maladaptive and related to severe psychopathology. Frost, Heimberg,

Holt, Mattia & Neubauer's (1993) subsequent factor analysis of the dimensions yielded by the Frost Multidimensional Perfectionism Scale (F-MPS; Frost et al., 1993) and the Hewitt-Flett Multidimensional Perfectionism Scale (HF-MPS; Hewitt & Flett, 1991) found that two higher-order dimensions, *Positive striving* and *Maladaptive evaluation concerns*, emerged. The two-factor model is now a commonly-used framework within perfectionism research, and whilst the two dimensions have sometimes been conceptualized and defined in slightly different ways, they always remain broadly connotative of positive or negative outcomes. In recent years, the most often-used terminology is that of "perfectionistic strivings" and "perfectionistic concerns" (Stoeber, 2017).

### **1.2 *Perfectionistic strivings (PS) and perfectionistic concerns (PC)***

*Perfectionistic strivings* (PS) is defined by Stoeber and Otto (2006) as a more positive dimension characterized by high personal standards and intrinsically motivated perfectionism. In comparison, *Perfectionistic concerns* (PC) is described as a negative dimension that is focused on concern over mistakes, self-doubt, extrinsically motivated perfectionism and a perceived discrepancy between actual achievements and high expectations (Stoeber & Otto, 2006). Fear of negative social evaluation and negative reactions to imperfection are also characteristic of PC (Gotwals, Stoeber, Dunn, & Stoll, 2012).

PC, or maladaptive perfectionism, has been associated with a multitude of negative outcomes (Hill & Curran, 2015) such as low self-esteem (Moroz & Dunkley, 2015), depression (Békés et al., 2015; Smith, Saklofske, Yan, & Sherry, 2015), obsessive-compulsive disorders (Limburg, Watson, Hagger, & Egan, 2017), anxiety (Smith, Saklofske, & Yan, 2015), avoidant coping strategies (Moroz & Dunkley, 2015) and eating disturbances (Muyan, Chang, Jilani, & Yu, 2015). Furthermore, it has been found to suppress correlations between PS and adaptive characteristics and inflate correlations between PS and maladaptive characteristics (Gotwals et

al., 2012; Hill, Huelsman, & Araujo, 2010) in zero-order correlations between PS and desirable outcomes. Consequently, PC is considered to be solely maladaptive as a construct (Gotwals et al., 2012). In comparison, PS (or adaptive perfectionism) usually leads to comparatively few negative outcomes (Hill & Curran, 2015). It has also been associated with adaptive characteristics such as conscientiousness, problem-focused coping, positive affect (Stoeber, Damian, & Madigan, 2017), satisfaction with life (Smith, Saklofske, & Yan, 2015), better exam performance and the setting of task-approach goals (Stoeber, Haskew, & Scott, 2015).

Nevertheless, it is also important to note that, within clinical populations, all forms of perfectionism have been found to contribute to negative outcomes. For example, Boone and Soenens (2015) found that for individuals high in body dissatisfaction, PS led to increased eating disorder symptomology, with Shafran, Cooper and Fairburn (2002) arguing that individuals within clinical populations may be more likely to exhibit “clinically relevant perfectionism” (p.778), in which they invest their self-worth almost obsessively in a domain that has high personal salience, such as the pursuit of thinness for individuals with some eating disorders. Molnar, Sirois and Method-Jones (2016) further argue that all forms of perfectionism can also be problematic for individuals living with long-term physical conditions. They contend that aspects of living with chronic illness, such as low levels of perceived control, the propensity for negative self-evaluation, and increased reliance on social support, can be particularly problematic for individuals who are high in either dimension of perfectionism, subsequently leading to poorer adjustment to illness and an exacerbation of illness symptoms.

A recent meta-analysis (Smith et al., 2017) further demonstrated that the pernicious effects of all forms of perfectionism are not only to be found within clinical populations; their analysis of 45 studies, encompassing community, psychiatric, and university samples, showed that both PS and PC were significantly related to increased suicidality. Similarly, Limburg, Watson,

Hagger and Egan's (2017) meta-analysis of 284 studies found all forms of perfectionism to be significantly related to psychopathologies such as anxiety disorders, eating disorders, obsessive-compulsive disorders and depression, and Fry and Debats (2009) found that risk of death within their sample of older adults was 51% higher for individuals who were high in PS.

### ***1.3 Perfectionistic strivings (PS), perfectionistic concerns (PC) and self-compassion***

Preliminary findings (Ferrari et al., 2018; Hiçdurmaz & Aydin, 2017; Mosewich et al., 2011; Neff, 2003a) consistently suggest that the maladaptive dimension of PC is also negatively related to self-compassion, a mindset characterized by being moved by and open to your own suffering, acknowledging that you are worthy of care and understanding, and treating yourself with the same kind of concern with which you would treat a loved one when they are experiencing difficult circumstances (Brion, Leary, & Drabkin, 2014; Neff, 2003b). In comparison, the relationship between PS and self-compassion is currently more difficult to explicate, as findings to date have been conflicted.

Self-compassion has been associated with a multitude of beneficial attributes, such as greater psychological wellbeing (Keng & Liew, 2016), better mental health (Pinto-Gouveia, Duarte, Matos, & Fráguas, 2014; Trompetter, de Kleine, & Bohlmeijer, 2016), reduced severity of eating psychopathology (Beekman, Stock, & Howe, 2017; Palmeira, Pinto-Gouveia, & Cunha, 2017), adaptive coping strategies (Sirois, Molnar, & Hirsch, 2015), and better physical and psychological adaptation to emotions (Clark et al., 2015). It has also been found to be associated with better adjustment to long-term health conditions (Ferrari, Dal Cin, & Steele, 2017; Sirois & Rowse, 2016; Sirois & Wood, 2016), better physical health (Homan & Sirois, 2017), better practice and self-regulation of health behaviors (Biber & Ellis, 2017; Dowd & Jung, 2017; Sirois, Kitner, & Hirsch, 2015) and a reduction in health risk behaviors (Kelly, Zuroff, Foa, & Gilbert, 2010).

In short, whilst perfectionism has often been found to be associated with undesirable biopsychosocial outcomes, the benefits of self-compassion have been shown to be numerous. Consequently, increasing self-compassion amongst individuals - particularly those high in perfectionism – is a valuable focus that could lead to significant improvements in mental and physical health and wellbeing. The rest of this section will therefore outline the existing literature pertaining to the relationship between perfectionism and self-compassion.

The first study to examine this relationship was Neff (2003a), who found a significant negative correlation between PC, as measured by the “Discrepancy” subscale of the revised Almost-Perfect Scale (APS-R; Slaney, Rice, Mobley, Trippi, & Ashby, 2001), and self-compassion ( $r = -.57, p < .01$ ). She also found that PS, as measured by the “Standards” subscale of the APS-R, was not significantly related ( $r = .07, p > .05$ ). More recent research by Ferrari, Yap, Scott, Einstein and Ciarrochi (2018) similarly demonstrated that maladaptive perfectionism, as measured by the ‘Socially prescribed perfectionism’ subscale of the Child-Adolescent Perfectionism Scale (Flett, Hewitt, Boucher, Davidson, & Munro, 2000) and a combination of subscales from the F-MPS (Frost et al., 1990), was significantly negatively related to self-compassion in their sample of adolescents ( $r = -.49, p < .001$ ) and adults ( $r = -.63, p < .001$ ).

However, unpublished conference proceedings by Mosewich et al. (2011) report that both PS and PC, as measured by the Sport Multidimensional Perfectionism Scale 2 (SMPS-2; Gotwals & Dunn, 2009), were negatively related to self-compassion within their sample of college athletes (PS  $r = -.26$ ; PC  $r = -.29$ ,  $p$ -values not reported). Further research into the relationship between perfectionism and self-compassion within a sample of nursing students (Hiçdurmaz & Aydin, 2017) has also found self-compassion to be negatively related to both PS, as measured by the “Self-oriented perfectionism” subscale of the HF-MPS (Hewitt & Flett, 1991, 2004), and PC, as measured by the “Socially-prescribed perfectionism” subscale of the HF-MPS (PS  $r = -.18, p < .01$ ); PC  $r = -.40, p < .01$ ).

As we have so far demonstrated, existing literature on the relationship between the dimensions of perfectionism and self-compassion has been limited, and has yielded mixed results. However, it is promising that all studies to date have found a significant negative relationship between PC and self-compassion, despite using different instruments to measure PC. This triangulation of results suggests that PC's effect on self-compassion is consistent across several different populations, and is not just an artefact of the perfectionism measures used. However, results are conflicted regarding self-compassion's relationship with PS. In this regard, these studies' use of different perfectionism measures makes it difficult to determine how self-compassion is truly related to this dimension of perfectionism.

Another important element that has so far been neglected in the literature is how self-compassion is conceptualized. Neff's (2003a, 2003b) conceptualization of self-compassion consists of three main components: a) *Self-kindness* – being kind and understanding to oneself rather than harsh and critical; b) *Common humanity* – seeing one's experiences as part of the larger human condition (that is, that we are all imperfect and fallible beings); and c) *Mindfulness* – non-judgmental awareness of one's painful thoughts and feelings (Neff, 2003b). Whilst these facets interact with and enhance each other, they are nevertheless conceptually distinct and experienced in phenomenologically unique ways (Neff, 2003b). Consequently, the Self-Compassion Scale (SCS; Neff, 2003a) consists of six factors, representing the three dyads of self-compassion: Self-kindness & self-judgment, common humanity & isolation, and mindfulness & over-identification. However, to date, no previous studies have examined the relationships between the dimensions of perfectionism and each dimension of self-compassion. Based on the consistently negative relationships found between PC and overall self-compassion to date, it is expected that PC will be negatively related to the three positive self-compassion components (self-kindness, common humanity, and mindfulness) and positively related to the three negative components (self-judgment, isolation, and over-identification). It



is harder to hypothesize how PS will perform, but based on findings so far, it is expected that PS will be unrelated or weakly negatively related to the three positive self-compassion components and unrelated or weakly positively related to the three negative components.

#### **1.4 The current study**

The overall aim of this study is to investigate how each dimension of perfectionism is related to 1) Overall self-compassion, and 2) Each dimension of self-compassion.

- **Hypothesis 1a:** PC will be negatively related to Overall self-compassion.
- **Hypothesis 1b:** PS will be weakly – if at all – negatively related to Overall self-compassion.
- **Hypothesis 2a:** PC will be negatively related to the positive self-compassion dimensions of *Self-kindness*, *Common humanity*, and *Mindfulness*; and positively related to the negative self-compassion dimensions of *Self-judgment*, *Isolation*, and *Over-identification*.
- **Hypothesis 2b:** PS will be weakly – if at all – negatively related to the positive self-compassion dimensions of *Self-kindness*, *Common humanity*, and *Mindfulness*; and weakly – if at all – positively related to the negative self-compassion dimensions of *Self-judgment*, *Isolation*, and *Over-identification*.

## 2. Method

### 2.1 *Participants*

Advertisements were placed via the lead researcher's social media accounts and the study was further advertised by the British Psychological Society's press office on their social media pages. Participants were also recruited via emails to several academic mailing lists, primarily aimed at postgraduate students and researchers with interests in health and counselling psychology

488 adults aged between 18 and 72 ( $\bar{X}$  age = 34.3 years,  $SD$  = 12.1 years) volunteered to participate in the cross-sectional online survey. Of the 488 participants, 60 had missing data on all predictor variables and therefore the current analyses are all based on data from 428 participants.

83.2% ( $n$  = 406) of the total sample were female, 89.1% ( $n$  = 435) indicated that English was their first language, and 87.3% ( $n$  = 426) identified as white. Further demographic information is available on request.

### 2.2 *Measures*

#### 2.2.1 *Perfectionism*

Perfectionism was measured using a 30-item scale that resulted from the item and factor analysis of Stoeber and Madigan's (2016) 79-item measure that formed part of the first author's master thesis (Linnett & Kibowski, 2017; see Table 2.1 for factors utilized). The 30-item scale (see Appendix A) measured three distinct factors of perfectionism. The negative dimension (PC) was measured by two factors: *Concern over mistakes*, which taps into the idea of negative reactions to mistakes (Frost et al., 1993; Hill et al., 2004), and *Discrepancy*, which focuses on the person's perception that their high standards are not being met (Hill et al., 2004). The

positive dimension (PS) was measured by one factor, *Striving for excellence*, which focuses on self-directed perfectionistic behaviors that have a motivational aspect (Hewitt & Flett, 1991, 2004; Hill et al., 2004). A summary of the scale development process can be found in Appendix B.

[Insert Table 2.1 here]

Items were presented as a series of statements, with participants indicating on a 5-point Likert scale how strongly they felt that the statement was reflective of their thoughts, feelings or behavior. Items from the *Concern over mistakes* factor included statements such as “*To me, a mistake equals failure*”, whilst items from the *Discrepancy* factor included statements such as “*My performance rarely measures up to my standards*” and items from the *Striving for excellence* factor included statements such as “*I demand nothing less than perfection of myself*”. Categorical McDonald’s omega estimates showed excellent levels of reliability for the three factors of *Concern over mistakes* ( $\omega = .94$  (95% CI [.93, .95]), *Discrepancy* ( $\omega = .93$  (95% CI [.92, .95]) and *Striving for excellence* ( $\omega = .93$  (95% CI [.92, .95])). Face validity of the scale was strong, as items clustered into similar factors to those from which the items were originally derived; for instance, the *Concern over mistakes* factor consisted of items derived from the ‘Concern over mistakes’ factors of the F-MPS (Frost et al., 1990) and the Perfectionism Inventory (PI; Hill et al., 2004) and the *Striving for excellence* factor consisted of items derived from the ‘Striving for excellence’ and ‘Self-oriented perfectionism’ factors of the PI and HF-MPS (Hewitt & Flett, 1991, 2004), respectively. The scale was also found to demonstrate adequate convergent and discriminant construct validity.

### 2.2.2 *Self-compassion*

Self-compassion was measured using the 26-item Self-Compassion Scale (SCS; Neff, 2003a). The SCS presents participants with a series of statements and asks them to indicate on a 5-point

Likert scale how often (from “Almost never” to “Almost Always”) they act that way towards themselves when they are going through a difficult time. The SCS includes statements such as “*I’m intolerant and impatient towards those aspects of my personality I don’t like*” and “*I try to see my failings as part of the human condition*”. Whilst the SCS consists of six factors (*Self-kindness, Self-judgment, Common humanity, Isolation, Mindfulness, and Over-identification*), Neff (2016) found that at least 90% of the variance in SCS scores can be accounted for by a general factor of self-compassion, arguing that the SCS can therefore be used either to analyze the six subscales of self-compassion or to generate an overall measure. Means for the items from each factor were created (reverse-scoring three of the factors – *Self-judgment, Isolation and Over-identification*), and a grand mean of all subscale means was then calculated to give an overall measure of self-compassion (e.g. Neff, 2016).

The SCS has demonstrated good internal consistency in past studies, with Neff (2003a) reporting a coefficient  $\alpha$  of between .75 and .81 across the six factors. More recently, Neff, Whitaker and Karl (2017) examined the factor structure of the SCS across four distinct populations (college undergraduates, community adults, individuals practicing Buddhist meditation and a clinical sample of individuals with a history of recurrent depression) and found it to be consistent across all four populations, reporting alphas of between .70 and .89 for the six factors and between .91 and .94 for overall self-compassion. The SCS has also demonstrated good convergent and discriminant construct validity (Neff, 2003a; Neff, Kirkpatrick, & Rude, 2007), strong predictive validity (Neff, 2016) and concurrent criterion validity (Neff & McGehee, 2009; Neff, Pisitsungkagarn, & Hsieh, 2008).

### **2.3 Ethical considerations**

All research was carried out in accordance with the British Psychological Society's Code of Ethics and Conduct (2009) and received full ethical approval from Nottingham Trent University's Research Ethics Committee (ref: 16/02/2017).

#### **2.4 Analyses**

Descriptive statistics were obtained for all perfectionism and self-compassion factors, and Spearman's Rho correlations were calculated to enable comparison with those from existing literature. Partial correlations were calculated between the more positive dimension of perfectionism and the variables of interest, as research has shown that the extent of the adaptive effects of the more positive perfectionism dimension only becomes apparent once the effects of negative perfectionism have been controlled for (Gotwals et al., 2012; Smith, Saklofske, Yan, et al., 2015; Stoeber & Otto, 2006).

Two structural equation models were specified in Mplus version 8 (Muthén & Muthén, 2011), the first to test the relationship between the dimensions of perfectionism and overall self-compassion, and the second to investigate this relationship further by testing the relationship between the dimensions of perfectionism and the dimensions of self-compassion. All models controlled for age and sex, and were estimated using WLSMV estimation as the indicators for the latent perfectionism factors were categorical. The following indices were used to adjudge model fit:

*Chi-square.* A "good" fit is expected to provide a non-significant  $\chi^2$  statistic at the 0.05 threshold (Barrett, 2007). However, it is generally acknowledged that in sample sizes greater than ~200, chi-square values are inflated, meaning the statistic almost always rejects the model when large samples are used (e.g. Hooper, Coughlan, & Mullen, 2008). As there were data from 428 participants in the dataset, it is therefore likely that the chi-square statistic would be inflated for this model.

*Comparative fit indices.* Hu and Bentler (1999) recommend a cut-off of  $\geq 95$  for the Comparative Fit Index (CFI) and the Tucker-Lewis Index (TLI). However, results of other studies do not necessarily support this threshold (Kline, 2011; Yuan, 2005), and thresholds of .90 for both the CFI and TLI are often cited in the literature as indicating “adequate” fit (e.g. Byrne, 1995; Hooper et al., 2008).

*Root mean square error of approximation (RMSEA).* The RMSEA is termed a “badness-of-fit” index, in that a value of zero represents the best fit. Hu and Bentler (1999) recommend that the cut-off value of the RMSEA should be close to .06, and that values lower than .03 represent excellent fit. They also advise that the upper confidence interval of the RMSEA should be  $<.08$ . However, it should be noted that some have argued against universal cut-off points for the RMSEA, contending that these cannot be supported and that the RMSEA should therefore not be pursued in isolation from other indices of model fit (Chen, Carolina, Curran, Bollen, & Kirby, 2009).

*Weighted root mean square residual (WRMR).* The WRMR is reported here instead of the standardized root mean square residual (SRMR) as the appropriate fit statistic for WLSMV estimation. Yu (2002) advises that with cut-off values  $<0.95$  or  $1.0$ , the WRMR has moderate or strong power to detect model fit. However, the utility of the WRMR has been called into question by other researchers, who argue that it is an experimental fit statistic and should be ignored (see comments by Muthén, 2014).

### 3. Results

#### 3.1 *Descriptive statistics*

Scores for all three perfectionism dimensions were normally distributed, as were scores for the self-compassion factors of *Self-kindness*, *Common humanity* and *Mindfulness* (see Table 3.1). However, scores for *Self-judgment*, *Isolation* and *Over-identification* were significantly negatively skewed, and scores for *Overall self-compassion* were significantly positively skewed, as they all had  $z$ -scores  $>2.58$  (Field, 2012). Furthermore, all the perfectionism dimensions and the self-compassion dimension of *Common humanity* were significantly platykurtic ( $z >2.58$ ).

[Insert Table 3.1 here]

Spearman's Rho correlations were then calculated between *Concern over mistakes*, *Discrepancy*, age, and all dimensions of self-compassion (see Table 3.2). Partial correlations between *Striving for excellence*, age and all dimensions were also calculated, controlling for *Concern over mistakes* and *Discrepancy* due to the suppressing effects of the negative dimensions of perfectionism (see section 2.4).

[Insert Table 3.2 here]

#### 3.2 *Model 1: Multidimensional perfectionism on overall self-compassion*

A structural equation model was tested of how the latent variables *Concern over mistakes*, *Striving for excellence*, and *Discrepancy* related to the observed variable *Mean self-compassion*. Participant *Age* and *Sex* were controlled for. As expected, the chi-square test was highly significant ( $\chi^2(489, n = 428) = 1063.01, p <.001$ ). However, all other fit indices apart from the WRMR indicated good model fit (see Table 3.3) and the model accounted for 60% of

the variance in the self-compassion score ( $r^2 = .60, p < .001$ ). *Age* was found to significantly predict higher self-compassion scores ( $\beta = .19, p < .001$ ) but *Sex* was not ( $\beta = .05, p = 0.33$ ).

[Insert Table 3.3 here]

Figure 1 presents the standardized factor loadings and parameter estimates for the paths of Model 1. The Perfectionistic Concerns (PC) dimensions of *Concern over mistakes* and *Discrepancy* were found to significantly predict lower levels of mean self-compassion at  $p < .001$  ( $\beta = -.45$  and  $\beta = -.34$  respectively) – providing support for Hypothesis 1a – whilst the Perfectionistic Strivings (PS) dimension of *Striving for Excellence* was not ( $\beta = -.02, p = 0.71$ ) – providing support for Hypothesis 2a.

[Insert Figure 1 here]

### **3.3 Model 2: Multidimensional perfectionism on multidimensional self-compassion**

A second structural equation model was then tested of how the latent variables *Concern over mistakes*, *Striving for excellence*, and *Discrepancy* related to the observed self-compassion variables of *Self-kindness*, *Self-judgment*, *Common humanity*, *Isolation*, *Mindfulness* and *Over-identification* with a hierarchical latent variable of *Overall perfectionism*. Participant *Age* and *Sex* were controlled for. As expected, the chi-square test was highly significant ( $\chi^2(624, n = 428) = 1258.320, p < .001$ ). However, all other fit indices apart from the WRMR indicated good model fit (see Table 3.3).

Figure 2 presents the standardized factor loadings and parameter estimates for the statistically significant paths of the final structural equation model, with the measurement models for CM, SE and D omitted. *Concern over mistakes* was the strongest indicator for *Overall perfectionism* ( $\beta = .92, p < .001$ ), followed by *Striving for excellence* ( $\beta = .73, p < .001$ ) and *Discrepancy* ( $\beta = .86, p < .001$ ). The PC dimensions of *Concern over mistakes* and *Discrepancy* significantly



predicted lower levels of the positive self-compassion dimensions of *Self-kindness* (CM  $\beta = -.37, p < .001$ ; D  $\beta = -.32, p < .001$ ), *Common humanity* (CM  $\beta = -.41, p < .001$ ; D  $\beta = -.15, p < .001$ ) and *Mindfulness* (CM  $\beta = -.46, p < .001$ ; D  $\beta = -.17, p < .01$ ) – providing support for Hypothesis 1a – and higher levels of *Self-judgment* (CM  $\beta = .35, p < .001$ ; D  $\beta = .32, p < .001$ ), *Isolation* (CM  $\beta = .31, p < .001$ ; D  $\beta = .39, p < .001$ ) and *Over-identification* (CM  $\beta = .41, p < .001$ ; D  $\beta = .23, p < .001$ ) – providing support for Hypothesis 1b. The PS dimension of *Striving for excellence* was found to only predict higher levels of the negative self-compassion dimension of *Self-judgment*, but weakly ( $\beta = .13, p < .01$ ), and to be not significantly related to any of the other dimensions of self-compassion, thus providing support for Hypothesis 2b.

[Insert Figure 2 here]

#### 4. Discussion

The aim of this paper was to use structural equation modelling (SEM) to investigate how the dimensions of perfectionism differentially relate to self-compassion, both as an overall concept and as a six-dimensional construct.

Model testing found **Hypothesis 1a** to be supported, in that the negative perfectionism dimensions of *Concern over mistakes* (CM) and *Discrepancy* (D) were significant predictors of lower levels of overall self-compassion. Furthermore, **Hypothesis 1b** was also supported, as the more positive perfectionism dimension of *Striving for excellence* (SE) was found to have a non-significant relationship with overall self-compassion. In accordance with **Hypothesis 2a**, CM and D were significant predictors of lower levels of the positive self-compassion dimensions of *Self-kindness*, *Common humanity* and *Mindfulness* and higher levels of the negative self-compassion dimensions of *Self-judgment*, *Isolation* and *Over-identification*. **Hypothesis 2b** was also supported, as SE was found to have a non-significant relationship with all but one of the self-compassion dimensions, where interestingly, SE was found to have a weak but statistically significant relationship with *Self-judgment*. This suggests that SE does still contribute to lower self-compassion via an increase in self-judgmental thoughts, feelings and behaviors.

These findings replicate the work of Neff (2003a), finding, as she did, a negative relationship between the maladaptive dimension of perfectionism and overall self-compassion and a non-significant relationship between the more adaptive dimension of perfectionism and overall self-compassion. Similarly, these findings replicate those of Ferrari et al. (2018), who also found a negative relationship between the maladaptive dimension of perfectionism and overall self-compassion (but did not assess the role of the more adaptive dimension of perfectionism). The results of this study also partially replicate those of Mosewich et al. (2011) and Hiçdurmaz &

Aydin (2017), although both of these studies found a significant negative relationship between both the maladaptive and more adaptive dimensions of perfectionism and self-compassion, whereas the present study only found a negative relationship between the more adaptive dimension of perfectionism and the *Self-judgment* dimension of self-compassion.

By considering self-compassion multidimensionally, this study has made a novel contribution by demonstrating that the negative perfectionism dimensions of CM and D differentially have a significant detrimental effect on an individual's ability to be self-compassionate, with CM predicting lower levels of self-compassion than D. Furthermore, even the more positive perfectionism dimension of SE has been shown to lead to increased levels of self-judgement. In short, people high in perfectionism are more likely to have lower levels of self-kindness, feelings of common humanity and mindfulness, and higher levels of self-judgment, isolation and over-identification with negative thoughts and feelings.

#### **4.1 Practical applications**

Recent studies such as those by Rozental et al. (2018) have demonstrated that internet-based cognitive behavioral therapy (I-CBT) is effective in reducing perfectionism, demonstrating significantly lower scores on the F-MPS' 'Concern over mistakes' subscale between pre-treatment and follow-up as well as reduced levels of depression and anxiety. Furthermore, at 6-12-month follow-up they found that 59% of participants in one sample and 43% in another met the criteria for recovery, and that participants showed similar levels of perfectionism, depression and anxiety as they had post-treatment, suggesting that I-CBT is also effective in maintaining improvements made during treatment. The findings of the present study, which showed that both 'Concern over mistakes' and 'Discrepancy' were strong indicators of overall hierarchical perfectionism, suggest that whilst the 'Discrepancy' dimension of perfectionism was not assessed by Rozental et al. (2018), this could also be expected to decrease as a result

of interventions targeting perfectionism. In turn, this study's findings that the 'Concern over mistakes' and 'Discrepancy' dimensions of perfectionism are negatively associated with self-compassion indicate that self-compassion could therefore be expected to increase as a result of lowered levels of these aspects of perfectionism. Lloyd, Schmidt, Khondoker and Tchanturia's (2015) systematic review and meta-analysis of psychological interventions to reduce perfectionism also found evidence that a variety of cognitive-behavioral interventions (individual, guided self-help, web-based and group) were able to significantly reduce aspects of perfectionism as well as anxiety, depression, obsessive-compulsive behavior and eating disorder symptomology.

Similarly, whilst self-compassion is considered to be a relatively stable personality trait (e.g. Clark et al., 2015; Keng & Liew, 2016), it is also possible for it to be induced through interventions such as the Mindful Self-Compassion Program (MSCP; Neff & Germer, 2013). The MSCP is designed for the general public as well as clinical populations, aiming to increase self-compassion through exercises such as visualization, self-kindness in language, and engaging in self-compassionate behaviors and habits (Neff & Germer, 2013). Neff and Germer (2013) reported a significant increase in self-compassion ( $d = 1.34$ ) and mindfulness ( $d = 0.52$ ) in participants who had taken part in the MSCP over the course of 8 weeks (effect size calculations from Kirby, Tellegen, & Steindl, 2017). Furthermore, a recent meta-analysis of compassion-based randomized controlled trials (nearly half of which involved interventions specifically targeted at increasing self-compassion) found an overall significant difference in participants' self-compassion ( $d = 0.70$ ,  $k = 13$ ,  $n = 980$ ) and mindfulness ( $d = 0.54$ ,  $k = 6$ ,  $n = 335$ ) as a result of taking part in the intervention (Kirby et al., 2017). Consequently, it may be reasonable to assume that, over time, self-compassionate states achieved through such interventions could be transformed into more effortless traits, in much the same way as has been found to be possible for mindfulness (Davis & Hayes, 2011).

These findings demonstrate how effective interventions aimed at targeting perfectionism or self-compassion can be, but to date there have been no interventions formulated that aim to both increase self-compassion and decrease perfectionism. The findings of this study make explicit how perfectionism erodes self-kindness, a sense of common humanity, and mindfulness whilst increasing self-judgment, isolation, and over-identification with painful emotions. The formulation of a dual-focus intervention that addresses perfectionistic thoughts, feelings, and behaviors whilst fostering an increasingly self-compassionate mindset could therefore be particularly beneficial to individuals, especially within clinical populations and applied health settings. For example, within diabetic populations, one study has so far demonstrated that Mindful Self-Compassion training can reduce diabetes distress and increase glycemic control amongst people with Type 1 and Type 2 diabetes (Friis, Johnson, Cutfield, & Consedine, 2016). It has also been posited that increased self-compassion could contribute to higher levels of self-care and health-promoting behaviours amongst diabetic individuals (Friis, Consedine, & Johnson, 2015). These findings are important, as evidence suggests that individuals with some chronic illnesses report lower levels of self-compassion and higher levels of shame and self-blame (Harrison et al., 2015; Harrison, Robertson, Goldstein, & Brooks, 2017), but so far interventions have only focused on increasing self-compassion rather than concurrently aiming to reduce perfectionism.

#### ***4.2 Creating tailored interventions***

A dual-focus intervention that addresses all areas of multidimensional perfectionism and multidimensional self-compassion could be an effective tool across many varied populations. However, the findings of the present study, conducted within a general population sample, suggest that for this population, perfectionism's greatest impact is via CM, leading to lower levels of mindfulness ( $\beta = -.46, p < .001$ ) and common humanity ( $\beta = -.41, p < .001$ ) and higher levels of over-identification with painful thoughts and feelings ( $\beta = .41, p < .001$ ). Interventions

developed for this population could therefore be focused on reducing CM whilst at the same time aiming to increase mindfulness and feelings of common humanity, and aiming to reduce over-identification with difficult emotions.

Consequently, if the relationship between self-compassion and perfectionism were to be explored within specific clinical populations, it would also be theoretically possible to develop targeted interventions that address the unique needs of that patient group. For example, within diabetes populations, perfectionists can struggle with the idea that they will never be able to achieve “metabolic perfection” (Basco, 1998) – i.e. complete control over their blood glucose levels – and can therefore give up on attempts to manage their condition altogether because they feel that they have “failed”. Building on the findings of this study and the models presented, it could be possible to elucidate the relationship between multidimensional perfectionism and multidimensional self-compassion within samples of people with diabetes and accurately model the effect this has on health outcomes. This would facilitate a thorough investigation of the barriers to self-compassion experienced by people with diabetes, which would then potentially enable interventions to be developed that aimed to reduce these specific barriers, potentially leading to an improvement in health outcomes.

Whilst this is only one example, the specific difficulties encountered by individuals living with chronic physical or psychological health problems are varied, and the use of the present study’s model could enable a flexible and responsive intervention to be developed that could be adapted to meet the specific needs of a number of populations.

#### ***4.2. Strengths, limitations, and future research directions***

Whilst the findings of this study are indicative of multidimensional perfectionism being an important factor in the development of multidimensional self-compassion, it should be noted that a large proportion of the sample were white (87.3%) and female (83.2%). This may partly

be due to the primary method of recruitment, as Topolovec-Vranic and Natarajan (2016) found that samples recruited via social media are more likely to be female. In addition to the intervention recommendations already outlined, future work should seek to investigate the differential relationship of the perfectionism factors to those of self-compassion within a more heterogeneous sample.

As Cohen (1965, as cited in Howell, 2013) notes, “in psychology, we measure men by their shadows” (p.8). SEM is well-placed to enable the measurement of these “shadows”, allowing variables that cannot be directly observed, such as perfectionism and self-compassion, to be estimated using measurement models comprised of numerous observed variables or indicators. The SEM approach used in this study is therefore advantageous as it allows simultaneous analysis of the relationships between multiple variables and ensures that measurement error is not aggregated in a residual error term for the latent variables created (Nachtigall, Kroehne, Funke, & Steyer, 2003). However, the use of SEM techniques to predict changes in outcome variables cannot confirm or deny a causal relationship. It would therefore be beneficial to employ longitudinal methods over a number of time-points to ascertain whether there is a causal relationship between perfectionism and self-compassion in much the same way as has been possible for perfectionism and depressive symptoms (Soenens et al., 2008) or for self-compassion and self-esteem (Marshall et al., 2015).

### **4.3 Conclusion**

Despite the limitations outlined, all of the hypotheses of the study were fully supported, and the models tested demonstrated that, within this general population sample, both negative dimensions of perfectionism have a significant negative impact on overall self-compassion and its positive components, simultaneously increasing levels of the negative dimensions of self-

compassion. Furthermore, even the more positive dimension of perfectionism has been found to raise levels of self-judgment amongst this sample.

These findings have the potential to significantly impact individual and therapeutic approaches to physical and psychological health and wellbeing, as they demonstrate how detrimental the negative dimensions of perfectionism can be to the development and maintenance of self-compassion, and how the *Concern over mistakes* dimension is generally more problematic in this regard than *Discrepancy*. Furthermore, the findings show that even the dimension of perfectionism that is considered more positive can still lead to negative outcomes, as demonstrated by the relationship between *Striving for excellence* and higher levels of *Self-judgment*. This knowledge can be used within existing cognitive-behavioral and psychotherapeutic frameworks to develop interventions that target these aspects of perfectionistic thinking and behavior as a way of reducing an individual's mental barriers to the psychologically and physiologically beneficial practice of developing and maintaining a self-compassionate mindset.

In conclusion, this study has extended current knowledge of how high levels of some forms of perfectionism can have a significant detrimental effect on the development and maintenance of a self-compassionate mindset, generating fresh understandings which have the potential to positively influence approaches to biopsychosocial wellbeing.



## **Acknowledgements**

The authors would like to thank all participants who took the time to share their experiences of perfectionism and self-compassion – without them, this research could not have taken place. May you be safe. May you be peaceful. May you be kind to yourself. May you give yourself the compassion that you need.

## **Declarations and funding**

The authors declare that there are no competing interests with respect to this research and that they received no financial support for the research or for their authorship of this paper.

Word count: 5,956  
(excl. abstract, declarations, acknowledgements, references, appendices, tables & figures)

## References

- Barrett, P. (2007). Structural equation modelling: Adjudging model fit. *Personality and Individual Differences, 42*(5), 815–824. <https://doi.org/10.1016/j.paid.2006.09.018>
- Basco, M. R. (1998). Perfectionism and diabetes care. *Diabetes Spectrum, 11*(1), 43–48. Retrieved from <http://journal.diabetes.org/diabetesspectrum/98v11n1/pg43.htm>
- Beekman, J. B., Stock, M. L., & Howe, G. W. (2017). Stomaching rejection: Self-compassion and self-esteem moderate the impact of daily social rejection on restrictive eating behaviours among college women. *Psychology and Health, 0446*(October), 1–23. <https://doi.org/10.1080/08870446.2017.1324972>
- Békés, V., Dunkley, D. M., Taylor, G., Zuroff, D. C., Lewkowski, M., Elizabeth Foley, J., ... Westreich, R. (2015). Chronic stress and attenuated improvement in depression over 1 year: The moderating role of perfectionism. *Behavior Therapy, 46*(4), 478–492. <https://doi.org/10.1016/j.beth.2015.02.003>
- Biber, D. D., & Ellis, R. (2017). The effect of self-compassion on the self-regulation of health behaviors: A systematic review. *Journal of Health Psychology, 1*–12. <https://doi.org/10.1177/1359105317713361>
- Boone, L., & Soenens, B. (2015). In double trouble for eating pathology? An experimental study on the combined role of perfectionism and body dissatisfaction. *Journal of Behavior Therapy and Experimental Psychiatry, 47*, 77–83. <https://doi.org/10.1016/j.jbtep.2014.11.005>
- Brion, J. M., Leary, M. R., & Drabkin, A. S. (2014). Self-compassion and reactions to serious illness: The case of HIV. *Journal of Health Psychology, 19*(2), 218–29. <https://doi.org/10.1177/1359105312467391>

- British Psychological Society. (2009). *Code of ethics and conduct*. Leicester, UK: British Psychological Society. Retrieved from [https://beta.bps.org.uk/sites/beta.bps.org.uk/files/Policy - Files/Code of Ethics and Conduct %282009%29.pdf](https://beta.bps.org.uk/sites/beta.bps.org.uk/files/Policy%20-%20Files/Code%20of%20Ethics%20and%20Conduct%202009.pdf)
- Byrne, B. B. (1995). One application of structural equation modeling from two perspectives: Exploring the EQS and LISREL strategies. In R. H. Hoyle (Ed.), *Structural equation modeling: Concepts issues, and applications* (pp. 138–157). Thousand Oaks, CA: Sage.
- Chen, F., Carolina, N., Curran, P. J., Bollen, K. A., & Kirby, J. N. (2009). An empirical evaluation of the use of fixed cutoff points in RMSEA test statistic in structural equation models. *Social Methods Research*, 36(4), 462–494. <https://doi.org/10.1177/0049124108314720>
- Clark, K. B., Naritoku, D. K., Smith, D. C., Browning, R. A., Jensen, R. A., Muhtadie, L., ... Sørensen, L. (2015). Trait self-compassion reflects emotional flexibility through an association with high vagally mediated heart rate variability. *Mindfulness*, 109(1), 106–120. <https://doi.org/10.1007/s12671-016-0549-1>
- Davis, D. M., & Hayes, J. A. (2011). What are the benefits of mindfulness? A practice review of psychotherapy-related research. *Psychotherapy*, 48(2), 198–208. <https://doi.org/10.1037/a0022062>
- Dowd, A. J., & Jung, M. E. (2017). Self-compassion directly and indirectly predicts dietary adherence and quality of life among adults with celiac disease. *Appetite*, 113, 293–300. <https://doi.org/10.1016/j.appet.2017.02.023>
- Ferrari, M., Dal Cin, M., & Steele, M. (2017). Self-compassion is associated with optimum self-care behaviour, medical outcomes and psychological well-being in a cross-sectional sample of adults with diabetes. *Diabetic Medicine*, 1–8.

<https://doi.org/10.1111/dme.13451>

Ferrari, M., Yap, K., Scott, N., Einstein, D. A., & Ciarrochi, J. (2018). Self-compassion moderates the perfectionism and depression link in both adolescence and adulthood.

*Plos One*, *13*(2), e0192022. <https://doi.org/10.1371/journal.pone.0192022>

Field, A. P. (2012). *Discovering statistics using R*. London, UK: Sage.

Flett, G. L., Hewitt, P. L., Boucher, D. J., Davidson, L. A., & Munro, Y. (2000). *The Child-Adolescent Perfectionism Scale: Development, validation, and association with adjustment*. Unpublished manuscript.

Friis, A. M., Consedine, N. S., & Johnson, M. H. (2015). Does kindness matter? Diabetes, depression, and self-compassion: A selective review and research agenda. *Diabetes Spectrum*, *28*(4), 252–257. <https://doi.org/10.2337/diaspect.28.4.252>

Friis, A. M., Johnson, M. H., Cutfield, R. G., & Consedine, N. S. (2016). Kindness matters: A randomized controlled trial of a mindful self-compassion intervention improves depression, distress, and HbA1c among patients with diabetes. *Diabetes Care*, *39*(11), 1963–1971. <https://doi.org/10.2337/dc16-0416>

Frost, R. O., Heimberg, R. G., Holt, C. S., Mattia, J. I., & Neubauer, A. L. (1993). A comparison of two measures of perfectionism. *Personality and Individual Differences*, *14*(1), 119–126. [https://doi.org/10.1016/0191-8869\(93\)90181-2](https://doi.org/10.1016/0191-8869(93)90181-2)

Frost, R. O., Marten, P., Lahart, C., & Rosenblate, R. (1990). The dimensions of perfectionism. *Cognitive Therapy and Research*, *14*(5), 449–468. <https://doi.org/10.1007/bf01172967>

Fry, P. S., & Debats, D. L. (2009). Perfectionism and the five-factor personality traits as predictors of mortality in older adults. *Journal of Health Psychology*, *14*(4), 513–524.

<https://doi.org/10.1177/1359105309103571>

Gaudreau, P., Franche, V., Kljajic, K., & Martinelli, G. (2017). The 2x2 model of perfectionism: Assumptions, trends, and potential developments. In J. Stoeber (Ed.), *The psychology of perfectionism: Theory, research, applications* (pp. 44–67). Oxon, UK: Routledge.

Gotwals, J. K., & Dunn, J. G. H. (2009). A multi-method multi-analytic approach to establishing internal construct validity evidence: The sport multidimensional perfectionism scale 2. *Measurement in Physical Education and Exercise Science*, 13(2), 71–92. <https://doi.org/10.1080/10913670902812663>

Gotwals, J. K., Stoeber, J., Dunn, J. G. H., & Stoll, O. (2012). Are perfectionistic strivings in sport adaptive? A systematic review of confirmatory, contradictory, and mixed evidence. *Canadian Psychology/Psychologie Canadienne*, 53(4), 263–279. <https://doi.org/10.1037/a0030288>

Harrison, S. L., Robertson, N., Apps, L., Steiner, M. C., Morgan, M. D. L., & Singh, S. J. (2015). “We are not worthy” – understanding why patients decline pulmonary rehabilitation following an acute exacerbation of COPD. *Disability and Rehabilitation*, 37(9), 750–756. <https://doi.org/10.3109/09638288.2014.939770>

Harrison, S. L., Robertson, N., Goldstein, R. S., & Brooks, D. (2017). Exploring self-conscious emotions in individuals with chronic obstructive pulmonary disease: A mixed-methods study. *Chronic Respiratory Disease*, 14(1), 22–32. <https://doi.org/10.1177/1479972316654284>

Hewitt, P. L., & Flett, G. L. (1991). Perfectionism in the self and social contexts: Conceptualization, assessment, and association with psychopathology. *Journal of Personality and Social Psychology*, 60(3), 456–470. <https://doi.org/10.1037//0022->

3514.60.3.456

- Hewitt, P. L., & Flett, G. L. (2004). *Multidimensional Perfectionism Scale: Technical Manual*. Toronto, Canada: Multi-Health Systems.
- Hiçdurmaz, D., & Aydın, A. (2017). The relationship between nursing students' self-compassion and multidimensional perfectionism levels and the factors that influence them. *Journal of Psychiatric Nursing*, 8(2), 86–94.  
<https://doi.org/10.14744/phd.2017.40469>
- Hill, A. P., & Curran, T. (2015). Multidimensional perfectionism and burnout: A meta-analysis. *Personality and Social Psychology Review*, 20(3), 269–288.  
<https://doi.org/10.1177/1088868315596286>
- Hill, R. W., Huelsman, T. J., & Araujo, G. (2010). Perfectionistic concerns suppress associations between perfectionistic strivings and positive life outcomes. *Personality and Individual Differences*, 48(5), 584–589. <https://doi.org/10.1016/j.paid.2009.12.011>
- Hill, R. W., Huelsman, T. J., Furr, R. M., Kibler, J., Vicente, B. B., & Kennedy, C. (2004). A new measure of perfectionism: The Perfectionism Inventory. *Journal of Personality Assessment*, 82(1), 80–91. [https://doi.org/10.1207/s15327752jpa8201\\_13](https://doi.org/10.1207/s15327752jpa8201_13)
- Homan, K. J., & Sirois, F. M. (2017). Self-compassion and physical health: Exploring the roles of perceived stress and health-promoting behaviors. *Health Psychology Open*, 1–9.  
<https://doi.org/10.1177/2055102917729542>
- Hooper, D., Coughlan, J., & Mullen, M. R. (2008). Structural equation modelling: Guidelines for determining model fit. *Electronic Journal of Business Research Methods*, 6(1), 53–60. Retrieved from  
<http://arrow.dit.ie/cgi/viewcontent.cgi?article=1001&context=buschmanart>

- Howell, D. C. (2013). *Statistical Methods for Psychology* (8th ed.). Belmont, CA: Wadsworth.
- Hu, L., & Bentler, P. M. (1999). Cutoff criteria for fit indexes in covariance structure analysis: Conventional criteria versus new alternatives. *Structural Equation Modeling*, 6(1), 1–55. <https://doi.org/10.1080/10705519909540118>
- Kelly, A. C., Zuroff, D. C., Foa, C. L., & Gilbert, P. (2010). Who benefits from training in self-compassionate self-regulation? A study of smoking reduction. *Journal of Social and Clinical Psychology*, 29(7), 727–755. <https://doi.org/10.1521/jscp.2010.29.7.727>
- Keng, S.-L., & Liew, K. W. L. (2016). Trait mindfulness and self-compassion as moderators of the association between gender nonconformity and psychological health. *Mindfulness*, 1–12. <https://doi.org/10.1007/s12671-016-0639-0>
- Kirby, J. N., Tellegen, C. L., & Steindl, S. R. (2017). A meta-analysis of compassion-based interventions: Current state of knowledge and future directions. *Behavior Therapy*. <https://doi.org/10.1016/j.beth.2017.06.003>
- Kline, R. B. (2011). *Principles and practice of structural equation modeling* (3rd ed.). New York, NY: Guilford Press.
- Limburg, K., Watson, H. J., Hagger, M. S., & Egan, S. J. (2017). The relationship between perfectionism and psychopathology: A meta-analysis. *Journal of Clinical Psychology*, 73(10), 1301–1326. <https://doi.org/10.1002/jclp.22435>
- Linnett, R. J., & Kibowski, F. (2017). Investigating the relationship between perfectionism and self-compassion: Research protocol. *European Journal of Counselling Theory, Research and Practice*, 1(9), 1–6. Retrieved from <http://www.europeancounselling.eu/volumes/volume-1-2017/volume-1-article-9/>

- Lloyd, S., Schmidt, U., Khondoker, M., & Tchanturia, K. (2015). Can psychological interventions reduce perfectionism? A systematic review and meta-analysis. *Behavioural and Cognitive Psychotherapy*, *43*(6), 705–731.  
<https://doi.org/10.1017/S1352465814000162>
- MacBeth, A., & Gumley, A. (2012). Exploring compassion: A meta-analysis of the association between self-compassion and. *Clinical Psychology Review*, *32*(6), 545–552.  
<https://doi.org/10.1016/j.cpr.2012.06.003>
- Marshall, S. L., Parker, P. D., Ciarrochi, J., Sahdra, B., Jackson, C. J., & Heaven, P. C. L. (2015). Self-compassion protects against the negative effects of low self-esteem: A longitudinal study in a large adolescent sample. *Personality and Individual Differences*, *74*, 116–121. <https://doi.org/10.1016/j.paid.2014.09.013>
- Molnar, D. S., Sirois, F. M., & Method-Jones, T. (2016). Trying to be perfect in an imperfect world: Examining the role of perfectionism in the context of chronic illness. In F. M. Sirois & D. S. Molnar (Eds.), *Perfectionism, Health, and Well-Being* (pp. 69–99). New York, NY: Springer.
- Moroz, M., & Dunkley, D. M. (2015). Self-critical perfectionism and depressive symptoms: Low self-esteem and experiential avoidance as mediators. *Personality and Individual Differences*, *87*, 174–179. <https://doi.org/10.1016/j.paid.2015.07.044>
- Mosewich, A. D., Crocker, P. R. E., Brune, S. M., Gaudreau, P., Kowalski, K. C., & Sabiston, C. M. (2011, October). *Examining relations between dimensions of perfectionism and self-compassion in university athletes*. Paper presented to the Canadian Society for Psychomotor Learning and Sport Psychology's annual conference, Winnipeg, Canada.
- Muthén, L. K. (2014). Model Fit Index WRMR. Retrieved from



<http://www.statmodel.com/discussion/messages/9/5096.html?1321986275>

Muthén, L. K., & Muthén, B. O. (2011). *Mplus user's guide* (6th ed.). Los Angeles, CA:

Muthén & Muthén.

Muyan, M., Chang, E. C., Jilani, Z., & Yu, T. (2015). Predicting eating disturbances in Turkish adult females: Examining the role of intimate partner violence and perfectionism. *Eating Behaviors, 19*, 102–105.

<https://doi.org/10.1016/j.eatbeh.2015.07.004>

Nachtigall, C., Kroehne, U., Funke, F., & Steyer, R. (2003). (Why) should we use SEM? Pros and cons of structural equation modeling. *Methods of Psychological Research, 8*(2), 1–22.

Neff, K. D. (2003a). Development and validation of a scale to measure self-compassion. *Self and Identity, 2*(3), 223–250. <https://doi.org/10.1080/15298860309027>

Neff, K. D. (2003b). Self-compassion: An alternative conceptualization of a healthy attitude toward oneself. *Self and Identity, 2*(2), 85–101. <https://doi.org/10.1080/15298860309032>

Neff, K. D. (2016). The Self-Compassion Scale is a valid and theoretically coherent measure of self-compassion. *Mindfulness, 7*(1), 264–274. <https://doi.org/10.1007/s12671-015-0479-3>

Neff, K. D., & Germer, C. K. (2013). A pilot study and randomized controlled trial of the mindful self-compassion program. *Journal of Clinical Psychology, 69*(1), 28–44. <https://doi.org/10.1002/jclp.21923>

Neff, K. D., Kirkpatrick, K. L., & Rude, S. S. (2007). Self-compassion and adaptive psychological functioning. *Journal of Research in Personality, 41*(1), 139–154. <https://doi.org/10.1016/j.jrp.2006.03.004>

- Neff, K. D., & Knox, M. C. (2017). Self-compassion. In V. Zeigler-Hill & T. K. Shackelford (Eds.), *Encyclopedia of Personality and Individual Differences*. New York, NY: Springer. [https://doi.org/10.1007/978-3-319-28099-8\\_1159-1](https://doi.org/10.1007/978-3-319-28099-8_1159-1)
- Neff, K. D., & McGehee, P. (2009). Self-compassion and psychological resilience among adolescents and young adults. *Self and Identity*, 9(3), 225–240. <https://doi.org/10.1080/15298860902979307>
- Neff, K. D., Pisitsungkagarn, K., & Hsieh, Y.-P. (2008). Self-compassion and self-construal in the United States, Thailand, and Taiwan. *Journal of Cross-Cultural Psychology*, 39(3), 267–285. <https://doi.org/10.1177/0022022108314544>
- Neff, K. D., Whitaker, T. A., & Karl, A. (2017). Examining the factor structure of the Self-Compassion Scale in four distinct populations: Is the use of a total scale score justified? *Journal of Personality Assessment*, 1–12. <https://doi.org/10.1080/00223891.2016.1269334>
- Palmeira, L., Pinto-Gouveia, J., & Cunha, M. (2017). The role of self-disgust in eating psychopathology in overweight and obesity: Can self-compassion be useful? *Journal of Health Psychology*, 1–10. <https://doi.org/10.1177/1359105317702212>
- Pinto-Gouveia, J., Duarte, C., Matos, M., & Fráguas, S. (2014). The protective role of self-compassion in relation to psychopathology symptoms and quality of life in chronic and in cancer patients. *Clinical Psychology and Psychotherapy*, 21(4), 311–323. <https://doi.org/10.1002/cpp.1838>
- Rozental, A., Shafran, R., Wade, T. D., Kothari, R., Egan, S. J., Ekberg, L., ... Andersson, G. (2018). Guided web-based cognitive behavior therapy for perfectionism: Results from two different randomized controlled trials. *Journal of Medical Internet Research*, 20(4), e154. <https://doi.org/10.2196/jmir.9823>

- Shafran, R., Cooper, Z., & Fairburn, C. G. (2002). Clinical perfectionism: A cognitive-behavioural analysis. *Behaviour Research and Therapy*, *40*(7), 773–791.  
[https://doi.org/10.1016/S0005-7967\(01\)00059-6](https://doi.org/10.1016/S0005-7967(01)00059-6)
- Sirois, F. M., Kitner, R., & Hirsch, J. K. (2015). Self-compassion, affect, and health-promoting behaviors. *Health Psychology*, *34*(6), 661–669.  
<https://doi.org/10.1037/hea0000158>
- Sirois, F. M., & Molnar, D. S. (2017). Perfectionistic strivings and concerns are differentially associated with self-rated health beyond negative affect. *Journal of Research in Personality*, *70*, 73–83. <https://doi.org/10.1016/j.jrp.2017.06.003>
- Sirois, F. M., Molnar, D. S., & Hirsch, J. K. (2015). Self-compassion, stress, and coping in the context of chronic illness. *Self and Identity*, *14*(3), 334–347.  
<https://doi.org/10.1080/15298868.2014.996249>
- Sirois, F. M., & Rowse, G. (2016). The role of self-compassion in chronic illness care. *Journal of Clinical Outcomes Management*, *23*(11), 521–527. Retrieved from <http://eprints.whiterose.ac.uk/107291/>
- Sirois, F. M., & Wood, A. M. (2016). Gratitude uniquely predicts lower depression in chronic illness populations: A longitudinal study of inflammatory bowel disease and arthritis. *Health Psychology*, *36*(2), 122–132. <https://doi.org/10.1037/hea0000436>
- Slaney, R. B., Rice, K. G., Mobley, M., Trippi, J., & Ashby, J. S. (2001). The revised Almost Perfect Scale. *Measurement and Evaluation in Counseling and Development*, *34*(3), 130–145.
- Smith, M. M., Saklofske, D. H., & Yan, G. (2015). Perfectionism, trait emotional intelligence, and psychological outcomes. *Personality and Individual Differences*, *85*,

155–158. <https://doi.org/10.1016/j.paid.2015.05.010>

Smith, M. M., Saklofske, D. H., Yan, G., & Sherry, S. B. (2015). Perfectionistic strivings and perfectionistic concerns interact to predict negative emotionality: Support for the tripartite model of perfectionism in Canadian and Chinese university students. *Personality and Individual Differences, 81*, 141–147.

<https://doi.org/10.1016/j.paid.2014.09.006>

Smith, M. M., Sherry, S. B., Chen, S., Saklofske, D. H., Mushquash, C., Flett, G. L., & Hewitt, P. L. (2017). The perniciousness of perfectionism: A meta-analytic review of the perfectionism-suicide relationship. *Journal of Personality*, (November 2016), 1–21.

<https://doi.org/10.1111/jopy.12333>

Soenens, B., Luyckx, K., Vansteenkiste, M., Luyten, P., Duriez, B., & Goossens, L. (2008). Maladaptive perfectionism as an intervening variable between psychological control and adolescent depressive symptoms: A three-wave longitudinal study. *Journal of Family Psychology, 22*(3), 465–474. <https://doi.org/10.1037/0893-3200.22.3.465>

Stoeber, J. (2017). The psychology of perfectionism: An introduction. In J. Stoeber (Ed.), *The psychology of perfectionism: Theory, research, applications* (pp. 3–16). Oxon, UK: Routledge.

Stoeber, J., Damian, L. E., & Madigan, D. J. (2017). Perfectionism: A motivational perspective. In J. Stoeber (Ed.), *The psychology of perfectionism: Theory, research, and applications* (pp. 19–43). Oxon, UK: Routledge.

Stoeber, J., Haskew, A. E., & Scott, C. (2015). Perfectionism and exam performance: The mediating effect of task-approach goals. *Personality and Individual Differences, 74*, 171–176. <https://doi.org/10.1016/j.paid.2014.10.016>

Stoeber, J., & Otto, K. (2006). Positive conceptions of perfectionism: Approaches, evidence, challenges. *Personality and Social Psychology Review*, *10*(4), 295–319.

[https://doi.org/10.1207/s15327957pspr1004\\_2](https://doi.org/10.1207/s15327957pspr1004_2)

Topolovec-Vranic, J., & Natarajan, K. (2016). The use of social media in recruitment for medical research studies: A scoping review. *Journal of Medical Internet Research*,

*18*(11), 1–17. <https://doi.org/10.2196/jmir.5698>

Trompetter, H. R., de Kleine, E., & Bohlmeijer, E. T. (2016). Why does positive mental health buffer against psychopathology? An exploratory study on self-compassion as a resilience mechanism and adaptive emotion regulation strategy. *Cognitive Therapy and Research*,

1–10. <https://doi.org/10.1007/s10608-016-9774-0>

Yu, C. Y. (2002). *Evaluating cutoff criteria of model fit indices for latent variable models with binary and continuous outcomes*. (Unpublished doctoral dissertation). University of California, LA. Retrieved from <http://statmodel2.com/download/Yudissertation.pdf>

Yuan, K. H. (2005). Fit indices versus test statistics. *Multivariate Behavioral Research*,

*40*(1), 115–148. [https://doi.org/10.1207/s15327906mbr4001\\_5](https://doi.org/10.1207/s15327906mbr4001_5)

## TABLES

**Table 2.1: Scales capturing perfectionistic strivings and perfectionistic concerns**

**Table 2.1**

*Scales capturing perfectionistic strivings and perfectionistic concerns*

Measures	Reference	Subscales recommended as indicators of...	
		Perfectionistic strivings	Perfectionistic concerns
F-MPS	Frost et al. (1990)	Personal standards	Concern over mistakes
HF-MPS	Hewitt & Flett (1991; 2004)	Self-oriented perfectionism	Socially prescribed perfectionism
APS-R	Slaney et al. (2001)	High standards	Discrepancy
PI	Hill et al. (2004)	Striving for excellence	Concern over mistakes

*Note.* Table is a partial reproduction of that found in Stoeber and Madigan (2016), p.33.

**Table 3.1: Descriptive statistics for perfectionism and self-compassion scores****Table 3.1***Descriptive statistics for perfectionism and self-compassion scores*

	<i>M</i>	<i>SD</i>	Skew			Kurtosis		
			Statistic	<i>SE</i>	<i>z</i>	Statistic	<i>SE</i>	<i>z</i>
Concern over mistakes	3.05	.04	0.06	0.11	0.50	-0.89	0.22	-3.98*
Striving for excellence	3.10	.04	0.08	0.11	0.72	-0.65	0.22	-2.91*
Discrepancy	3.22	.04	-0.11	0.11	-0.97	-0.89	0.22	-3.99*
Overall self-compassion	2.62	.04	0.59	0.11	5.22*	-0.26	0.22	-1.17
Self-kindness	2.73	.04	0.25	0.11	2.20	-0.37	0.22	-1.64
Self-judgement	3.64	.04	-0.58	0.11	-5.21*	-0.14	0.22	-0.61
Common humanity	2.91	.05	0.14	0.11	1.23	-0.73	0.22	-3.29*
Isolation	3.54	.05	-0.54	0.11	-4.79*	-0.40	0.22	-1.79
Mindfulness	3.14	.04	0.01	0.11	0.13	-0.52	0.22	-2.31
Over-identification	3.69	.04	-0.69	0.11	-6.17*	-0.09	0.22	-0.39

\* Significant at  $p < .01$

**Table 3.2: Correlations between perfectionism, self-compassion, and age**

**Table 3.2**

*Correlations between perfectionism, self-compassion, and age*

	1	2	3	4	5	6	7	8	9	10	11
1. Overall self-compassion	-										
2. Self-kindness	.84***	-									
3. Self-judgment	-.85***	-.73***	-								
4. Common humanity	.78***	.66***	-.54***	-							
5. Isolation	-.79***	-.54***	.67***	-.54***	-						
6. Mindfulness	.80***	.69***	-.56***	.67***	-.47***	-					
7. Over-identification	-.77***	-.50***	.67***	-.45***	.66***	-.55***	-				
8. Concern over mistakes	-.73***	-.60***	.69***	-.52***	.57***	-.54***	.59***	-			
9. Discrepancy	-.68***	-.58***	.65***	-.47***	.57***	-.48***	.54***	.71***	-		
10. Striving for excellence	-.08 <sup>a</sup>	-.05 <sup>a</sup>	.17*** <sup>a</sup>	-.02 <sup>a</sup>	.03 <sup>a</sup>	.01 <sup>a</sup>	.07 <sup>a</sup>	.60***	.71***	-	
11. Age	.12*	.10*	-.09	.12*	-.06	.10	-.12*	-.03	-.10	-.05	-

<sup>a</sup> Controlling for *Concern over mistakes* and *Discrepancy*

\* Significant at  $p < .05$

\*\*\* Significant at  $p < .001$



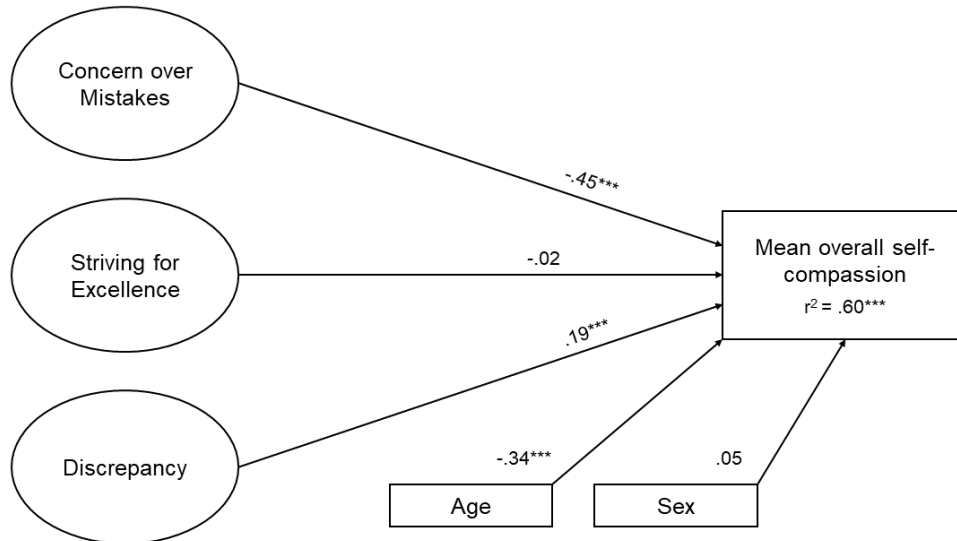
**Table 3.3: Model fit indices**

**Table 3.3**  
*Model fit indices*

	CFI	TLI	RMSEA	90% CIs for RMSEA		WRMR
				Lower	Upper	
Model 1: Multidimensional perfectionism on overall self-compassion	0.97	0.97	0.05	0.05	0.06	1.25
Model 2: Multidimensional perfectionism on multidimensional self-compassion	0.97	0.96	0.05	0.05	0.05	1.13

## FIGURES

**Figure 1: Model diagram with standardized regression paths for Model 1**

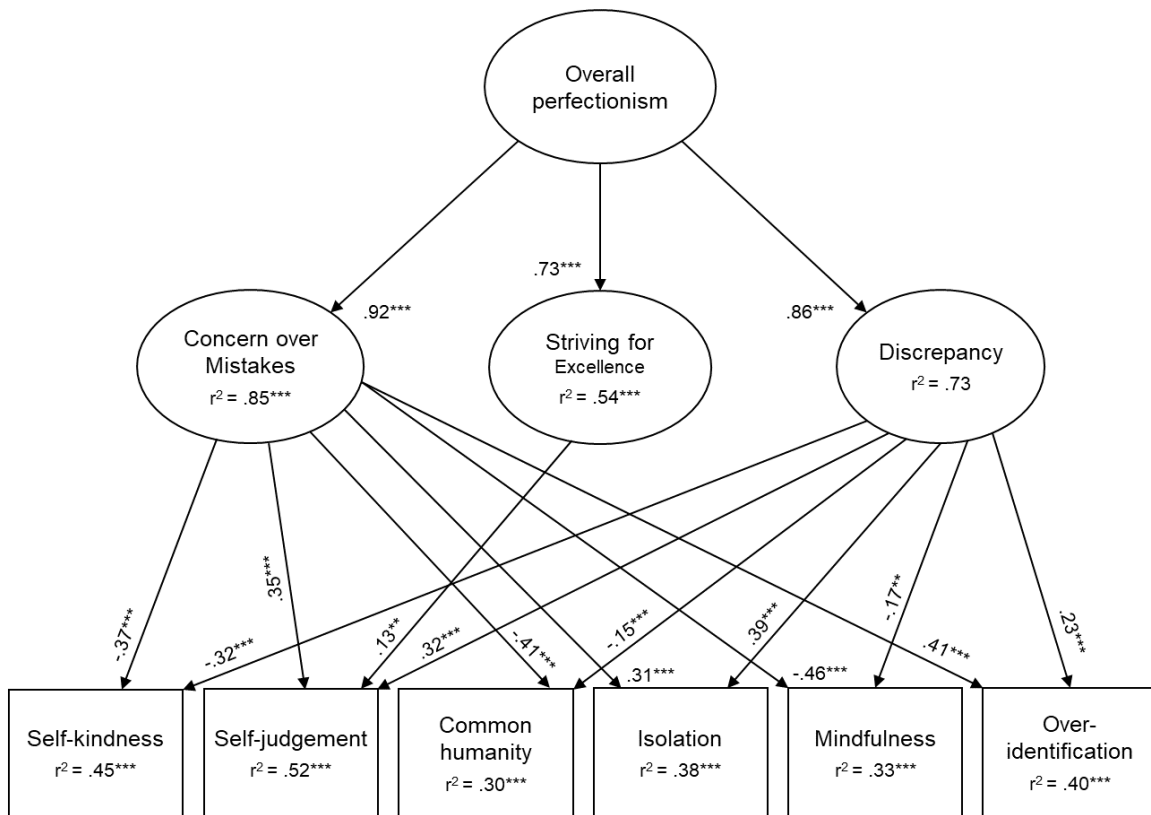


**Fig. 1.** Standardized regression paths for Model 1, relating the 3-factor model of perfectionism to overall self-compassion.

Note: Correlations between all perfectionism factors were significant at  $p < .001$ .

Key: \*\*\* denotes significance at  $p < .001$

**Figure 2: Model diagram with standardized regression paths for Model 2**



**Fig. 2.** Standardized estimates for Model 2, relating the hierarchical 3-factor model of perfectionism to the six factors of self-compassion.

Note: (i) The measurement models for CM, SE and D have been omitted; (ii) Age and Sex were controlled for in the regression paths; (iii) Correlations between all self-compassion factors were significant at  $p < .01$ .

Key: \*\*\* denotes significance at  $p < .001$ , \*\* denotes significance at  $p < .01$